



As the Wood Turns

The monthly newsletter of the Chicago Woodturners



23 Years of Art, Craft, Technology, and Tradition

In this Issue

- March Demo review, pg. 3
- Getting to Know, pg. 9

Next Meeting

April 13, 2010

Friendship Village

Bridgewater Place Building

Woodridge Room

350 Schaumburg Rd.

Schaumburg, IL

847-884-5000

7:00PM-10:00PM

Regular Features

- Curls from the President's Platter, pg. 2
- Committee Reports, pg. 4,8
- AAW News, pg. 4
- Calendar of Events, pg. 6
- Meeting Minutes, pg. 7
- Member's Gallery, pg. 10,11&12
- For Sale, pg. 13
- Symposium Updates, pg. 14&15

Inaugural Meeting at Friendship Village is a Success

Our first meeting at Friendship Village was successfully held on March 9. When we arrived for the meeting that Tuesday, our room was all set up with 80 chairs and numerous tables provided by the facility's staff. All CWT members had to do was to take a few minutes to setup our club equipment and get ready for the evening's events. Although we don't have as much room to spread out like we previously had, the facilities were meticulously clean, well lit, and large enough for the over 80 members in attendance.



April meeting Attendees

Say Cheese!



The staff was very friendly and helpful. A cafe is available down the hall from our room with a good selection of food and beverages for purchase. A large area was also available right outside our meeting room for informal gathering and conversation. We appear to have found a pleasant new home for everyone to enjoy an evening with friends.

April Demonstration

Delicate Vessels with Ultra Thin Stems

Do you find it challenging to get your stems really thin without snapping? At the April meeting Alan Carter will show us the tools and techniques he uses to create the long thin stems and finials that have become a characteristic in much of his work. Alan has a long history creating artistic pieces in mediums that include painting, furniture, and most recently woodturnings. A gallery of his work can be seen at www.alancarterstudio.com.



Curls from the President's Platter

Phil Brooks



Phil Brooks

**AAW
members now
have access to
all past issues
of the Journal
online at
[www.woodturners
.org](http://www.woodturners.org)**



Phil, look at the variety on the Gallery Table.

At last month's club meeting I briefly discussed the advantages of belonging to the American Association of Woodturners (AAW). As you know the Chicago Woodturners is a chapter of the AAW. Although being a member of the AAW is not a prerequisite for joining the Chicago Woodturners, it is highly recommended. At the present time, 60% of our members are also members of the AAW. Let me paraphrase some of the benefits in joining the AAW, as defined on the AAW Website.

The AAW is the largest international, non-profit organization in the world dedicated to the advancement of woodturning. It presently has over 13,000 members and over 300 local chapters, covering all 50 states as well as 15 in Canada and 1 in Australia and Japan.

The most obvious advantage in belonging to the AAW is receiving the American Woodturner journal published 6 times a year. The AAW journal is the most informative and widely read woodturning publication in the world. Every issue (up to 60 pages) is packed with a wide array of articles, focusing on everything from basic woodturning techniques and special projects, to innovative design ideas and inspirational gallery reviews. I believe that this is the best, and most professionally done, journal on woodturning available. It's something that every member looks forward to receiving and you will too, once you become a member. Check a copy out from the club library and see if you don't agree.

In addition to the journal, the AAW publishes a biennial Resource Directory. This directory provides a comprehensive listing of the AAW members, local chapters, and professional demonstrators. There is also a listing of available books, videos, DVDs and supplies with savings of up to 50% on AAW merchandise, project books, DVDs, logo apparel and more.

AAW members automatically receive coverage for bodily injury during chapter-affiliated demonstrations or events under the liability insurance that AAW provides to local chapters. For those members who are looking for cost effective group rates for health and life insurance, as well as commercial business insurance, there are additional insurance values as well.

As a member of the AAW you will also be eligible to apply for Educational Opportunity Grants to assist you with classes, workshops or symposiums. Local chapters are also eligible to receive grants for visiting demonstrators, youth outreach, equipment purchases and special events.

And as a final bonus, the AAW offers the most premiere woodturning event in the world, the annual AAW Symposium. It is held in a different region of the country each year, featuring dozens of renowned demonstrators who share their skills and insights with the AAW membership. Additional highlights of the symposium include a trade show of machinery, tools, supplies and turning stock, and a major exhibition of world-class turned art.

So what are you waiting for? Go to the AAW website, www.woodturner.org, and sign up today or pick up an application form at the next club meeting. You'll be glad you did.

Phil

Segmented Design and Construction Demo Review

Clint Stevens

Those of us who have had tools missing in our shops since the Reagan administration have a mystical awe of those who have the organization and planning skills to be segmented woodturners. At our February meeting, Al Miotke took us on a tour of stacked ring segmented woodturning which still left some of us in awe, but at least explained the process. Success came to Al by the way of books, symposium presentations and considerable trial and error. Fortunately he learned and was inspired from turners like Malcolm Tibbetts, Ray Allen and Curt Theobald (Visit the CWT library for more inspiration.)

Segmented woodturning allows for shapes and complex color patterns which are difficult to achieve any other way. There is no need to worry about hollowing or end grain tear-out. As a bonus, you don't need as much exotic wood for spectacular segmented turnings.

Unfortunately, there are a few drawbacks to segmentation. Projects

take longer and most of that time is spent away from the lathe. Segmented turning requires some planning, a little math and a few extra tools (disk sander and well tuned table or chop saw). Along the way, you will become aware of the necessity of precision and some well made jigs.

After designing the woodturning, the lumber is selected and prepared with a cross cut saw jig made specifically to cut segments at the precise angle necessary. Next, sand all segments and prepare to glue them with PVA glue. (Al's favorite is Titebond Original glue). Al glues the segments in matched pairs, then fours, up to half circles, and finally full rings. Hose clamps are useful here. Sand tops and bottoms of all rings and glue into a stack. At last, it's time to turn!

As a climax, Al spilled the secrets to building a free formed segmented woodturning which resembled a folded figure eight. Dark woods gave way to light woods along the length of the turnings as the trip was completed. Although the

finished turning is complex, the methods are largely the same as any other segmented turning. The pieces were cut, trued, glued and assembled into rings...lots of rings. The rings are all turned at the lathe then thinned with a Forstner bit. After putting the rings in the selected order for glue-up (there's that organization and planning thing again), they are ready for angle sanding. The rings are mounted on an angled board and fed through a drum sander. With a flexible hose serving as a form, the rings are clamped in short segments and those segments are dry fit. After final adjustments, the entire project is glued together and sanded. Watching this process was very much like being back stage at a magic show.

Al posed a serious challenge in his presentation to push our skills beyond our comfort zone. One of the reasons we have our abilities is the mastery and generosity of many turners like Al Miotke. Thanks Al!



Ray Allen
Segmented Turning
at the 1999 Provo
Symposium

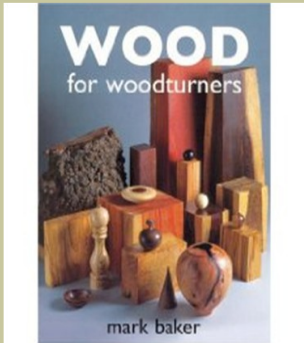
***Al's
presentation
is available
on the
Demonstrator
page of the
CWT Website***



"Bourbon Street Blues"
by Malcolm Tibbetts

Library News

Clint Stevens



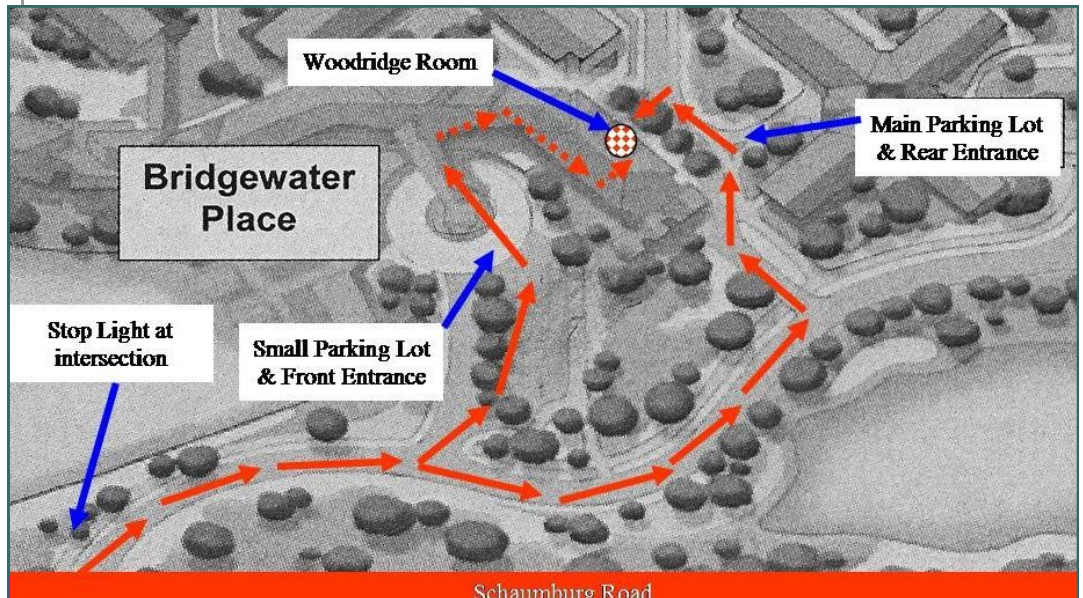
The CWT library announces a new acquisition, "Wood for Woodturners," by Mark Baker. If you can't tell African Rosewood from Indian Rosewood; if Wenge is easy to turn; or if Redwood can give you pneumonia; you should check out this book. Thank Yew.



Clint and his new library cabinet will be open for business at the April meeting.

Did you miss our first meeting at Friendship Village?

Our New Location
 Friendship Village is located 2.5 miles south of I-90 and .4 miles west of Roselle Road at 350 West Schaumburg Road, Schaumburg, IL



Do you have a technique you would like to share? How about doing a gallery review.

If interested contact Scott Barrett

Upcoming Meeting Agenda

	Gallery Review	Demonstration
April	Wahne Bernahl	Alan Carter-Delicate Vessels with Ultra Thin Stems
May	Paul Pyrcik	
June		Binh Pho - AirBrushing 101
July		Binh Pho - Thin Wall Piercing
August		
September		Clint Stevens—Eccentric Box
October		
November		
December		Annual Christmas Party

AAW News and Updates**Al Miotke**

Two new exhibits were recently announced by the AAW. First is the Teapot exhibit, second is an exhibit on spoons. I can guarantee you that these are not your normal soup spoons. Both of these exhibits are on display at the AAW headquarters in Minneapolis and will run from March 2 to May 22.

In this month's "Curls," Phil told us about some of the benefits of AAW membership. Well, here is a new one that was just announced. Every month names will be randomly drawn from the AAW database and prizes awarded. These monthly prizes include

DVD's, tools, gift certificates, and much more donated by corporate sponsors.

Last year I reported on a new feature of the AAW website, the "Wood Art Sales" gallery. Well, if you have not visited it lately, you're missing out on viewing some excellent works of art. The gallery has grown to over 350 pieces on display by many of the top artists in the AAW. If you're looking for some inspiration for your next piece or you just want to view some excellent technical and artistic work, it's a great place to start.



John Goodyear Entry -
AAW Teapot Exhibit

Writer for the "AAW News and Updates" article needed. It's a great way to keep yourself informed about the AAW and share your knowledge with fellow members. Most important, its fun!

Contact Al Miotke if interested.

Chicago Woodturners Board of Directors and Committee Chairs 2010

President	Phil Brooks	847-548-6477	brookspphil@sbcglobal.net	1052 Cheswick Dr	Gurnee, IL 60031
Vice President, Web	Scott Barrett	847-562-9121	dr@bdental.net	46 Bridlewood Lane	Northbrook, IL 60062
Secretary	Andy Kuby	847-317-1841	kubywinslow@comcast.net	2945 Cherokee Ln.	Riverwoods, IL 60015
Treasurer	Jan Shotola	847-412-9781	jshotola@yahoo.com	1865 Western Ave.	Northbrook, IL 60062
Past President	Paul Shotola	847-412-9781	p.shotola@comcast.net	1865 Western Ave.	Northbrook, IL 60062
Newsletter Editor	Al Miotke	847-297-4877	alan.miotke@chamberlain.com	920 Sumac Lane	Mount Prospect, IL
Membersip	Thomas Stegall	309-635-1623	thomas.stegall@aol.com	3470 N. Keating Ave.	Chicago, IL 60041
Librarian	Clint Stevens	773-852-5023	clint.stevens@comcast.net	1635 S. Chesterfield	Arlington Hts., IL 60005
Raffle	Chuck Svazas	708-482-3866	csvazas@sbcglobal.net	707 Bransdale Rd	LaGrange Park, IL
Tools & Equipment	Don McCloskey	847-420-6978	mccloskey@ameritech.net	2028 Gilboa Ave.	Zion, IL 60099
Demonstrations	Binh Pho	630-365-5462	toriale@msn.com	48W175 Pine Tree Tr.	Maple Park, IL 60151
Set-up / Clean-up	Bill Robb	847-931-1876	akmtns1@comcast.net	46 Lone Dr. Unit C	South Elgin, IL 60177
Audio & Video	Lee Svec	847-331-0715	svec@att.net	661A Fieldcrest Dr.	South Elgin, IL 60177
Ornamental Turning	Bill Hochmuth	630-620-8566	wfhochmuth@comcast.net	2S725 Parkview Dr.	Glen Ellyn, IL 60137

Attention artists, teachers and demonstrators
 If you are participating in a craft show, have a gallery exhibition, will be teaching or demonstrating your craft, or know of an event of interest to woodturners, please contact the Editor to add the event to the calendar. A little self-promotion is a good thing. Your fellow woodturners want to know about your events.



Calendar of Events

Classes at Woodcraft, Woodridge

Turning Spindles and Drawer Pulls, April 17
 Custom Pen Blanks with Don Washow, April 18
 Turning 101 with Carole Floate, June 12-14
 Turning 102 (Bowl Turning) with Carole Floate, July 10-11
 Turning 101 with Carole Floate, August 7-8
 Turning 101 with Carole Floate, September 11-12
 Turning 102 (Bowl Turning) with Carole Floate, October 16-17
 Turning 101 with Carole Floate, November 6-7

Classes at Woodcraft, Libertyville

Turning 101 with Carole Floate, April 10-11
 Pen Turning 1 with Don McCloskey, April 24
 Turning 101 with Carole Floate, May 15-16

Classes at Woodcraft, Milwaukee (New location in New Berlin)

Intro to the Lathe with Hank Bardenhagen, April 17
 Pen Turning with Melanie Wegner, April 25
 Segmented Peppermill with Jason Swanson, May 16 & May 23
 Turn a Natural Edge Bowl with Hank Bardenhagen, May 20
 Intro to the Lathe with Hank Bardenhagen, May 22
 Finishing Turned Projects with Jason Swanson, May 24

Symposiums

Utah Turning Symposium, May 6-8, Orem, UT

www.utahwoodturning.com

24th Annual AAW Symposium, June 18-20, Hartford, CT

www.woodturner.org

Turn-On! Chicago 2010, August 20-22, Mundelein, IL

www.turnonchicago.com

2nd Segmenting Symposium, November 11-14, Arrowmont, Gatlinburg TN

www.segmentedwoodturners.org

To add events to the calendar, contact Al Miotke at
 827-297-4877 or alan.miotke@chamberlain.com

February 2010 Meeting Minutes**Andy Kuby****Commenced: 7:00pm****Adjourned: 9:40pm**

President Phil Brooks brought the meeting to order and welcomed the Club to our new meeting site at Friendship Village, a community of over 800 people. The room seemed slightly smaller than we are used to, but much better organized and certainly a lot cleaner with better lighting. The obvious shortage of chairs will have to be worked on. He reviewed the site's rules, we can't be as freewheeling as we were in the basement of Woodcraft:

- 1) No smoking.
- 2) CWT is limited to first floor rooms which we have rented.
- 3) No weapons, explosives etc.
- 4) No fighting, obscene acts, etc.
- 5) No food and drink to be brought in.

Friendship Village has a catering service/café.

Sandy White has arranged for a discount and free shipping (over a minimum purchase) with Exotic Woods. This is good until the end of March. Talk with Sandy (847-913-1778) for additional information.

Turn On Chicago Symposium Committee met March 8, 2010. Phil reported that the committee was basically on schedule. Auction items are being solicited (over 150 requests out). Registrations are at approximately 115 as of this evening. No single rooms are left for overnight accommodations (if you have a single room and want to share Jan will refund the difference, please contact her at 847-412-9781). Very few double rooms are left on site but we have reserved blocks of

rooms in local hotels.

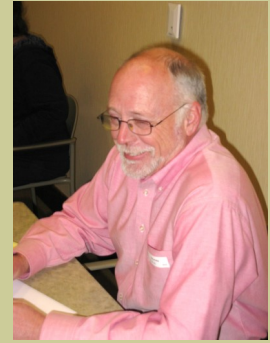
The move from the Woodcraft basement went smoothly, thanks to all who showed up to help. Ron Zimmerman has generously rented us the garage for \$1/year.

There has been a shakeup in committee chairs. Al Miotke has resigned from Membership to take over the Newsletter and Thomas Stegall has stepped in as Membership Chair.

Chicago Woodturners would like to have 100% of our members join the AAW. Approximately 60% of the club are currently members in both organizations. You must be an AAW member to serve on the CWT board. AAW membership has a number of benefits:

- 1) Excellent magazine, in color six times a year.
- 2) Liability insurance for CWT/AAW members when we present, etc.
- 3) National coverage.
- 4) Group insurance program.

The Arlington Heights Senior Center was the other venue considered for our new meeting site. They have a large woodshop which is well equipped with tools. They are not able to keep it open enough of the time due to lack of qualified persons to monitor the shop. Volunteers are needed to expand the shop open time for an additional 3 hours, one to two times a week. This is not a teaching position, so you could be using the tools for a project of your own while you are there. Please see Phil or contact Arlington Heights Senior Center directly to volunteer.



Andy Kuby
Our Secretary hard at work

**Arlington
Heights Senior
Center is
looking for
volunteers to
monitor
woodshop
activities**

**If interested,
See Phil**



Let me try again Darrell,
G'day



Psst, Master Chief!!
Did I actually get that editor job.



- AAW News Update
- Feature Article Writers

Welcome!

Thomas Stegall
 New
 Membership
 Chair

Contact Thomas
 at:
 thomas.stegall
 @aol.com



That's right Jason!
I'm the new Membership Chairman.

From the New Editor

Al Miotke

It's a pleasure for me to take on this challenge of Editor for the CWT Newsletter. I hope to continue with the high quality monthly publications that you have been reading from my predecessor, Paul. In the coming months I hope to give the newsletter a fresh look. Not because it needs it, just to give you something new to look at. There have been a number of members who have been regularly writing articles to help make the newsletter informative. I look forward to continue working with these individuals but hope to add your name to the list of contributors to the publication. We have a lot of talent in the group. Whether you are just starting your woodturning journey or have been at it for many years, you will have something to contribute, if not right now, in the future. Maybe you have purchased a new tool, tried a new technique, read a new book, or had an experience that would be of interest to other members. Tell us about it. You don't have to be an experienced writer, just willing to try. Contact me by email or phone if you want to discuss an idea. An interesting and informative newsletter has to be a collaboration from many members.

Membership Updates

Al Miotke

We had over 80 of our members in attendance at our March 9 meeting and this month our 2010 membership grew to 161. We had 3 new members and 1 guest at this month's meeting. Our new members include Rick Cook, a turner with 8 years experience from Rockford; Dan Ridenour from Antioch has been turning for 45 years; and Gary Ontko from Crystal Lake, who is new to woodturning. Dan Bochnovic from LaGrange and

CWT Dues
 for 2010
 \$25.00 for
 an
 individual
 membership
 \$35.00 for
 the
 whole family

Marshall Gillam from Bartlett were also in attendance as guests. Welcome to our new members and guests.

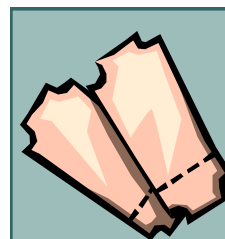
I have only been in the membership role for a short 7 months but it was an enjoyable experience. It gave me an opportunity to meet many of you (as I gladly accepted your 2010 dues). Beginning with the April Meeting Thomas Stegall has agreed to take over this role as I move into the editor position. Please contact Thomas for any future questions regarding your membership.

Thanks Tom!

April Meeting

On the Raffle Table

You can count on the raffle table being full of turning blanks and other items of interest to meet the needs of your next project. Bring cash and help support your club.



Raffle Tickets

\$1 Each
 \$5 for 6
 Value Pack \$10 for
 13

Getting to know Bill Robb

Tell us about your family.

My wife Millie and I celebrated our 50th wedding anniversary this past June. We have two daughters; LeAnn and Andrea.

How long have you been turning and how did you get started?

Over 30 years. I was introduced to woodturning in high school and college, then began turning regularly with the Alaskan Creative Woodworkers Club near Anchorage Alaska.

What types of pieces did you first turn? Do you still have any of them?

I bought a 12" Delta Lathe that came with two books by Dale Nish on "brick laid" segmented bowls and I began turning these types of bowls and natural edged birch bowls. Yes, I still have some of my earliest pieces. One of them is a salad bowl that we still use today.

Favorite woods to turn?

Cherry and Walnut.

What Brand/Model of Lathe(s) do you use?

I still use my 12" Delta and I bought a Carbotech mini-lathe a few years ago.

Tell us about your work background.

I worked for G.E. doing environmental research.

What other activities or hobbies you participate in?

I enjoy many of the same hobbies I was involved in when I began turning; photographing wildlife, gardening, fishing and flying.

What advice would you give to newer woodturners?

A lot of beginners think they have to buy a lot of tools in order to turn something interesting. I have found that you just need a lot of repetition with just a few tools. Also, be prepared to throw away a lot of your early attempts, which is why I recommend starting with inexpensive domestic woods.



Bill volunteering at a meeting

Bill shows us the results of 30 years experience.



It's all in the details



Member's Gallery



Paul Dehaan
Buckthorn



Bill Brown
Maple



Jason Swanson
Maple, Walnut



Ken Staggs
Cherry

February Meeting



Darrell Radar
Purchased Bowl From New Zealand
Fernwood



Jason Swanson
Acrylic



Martin Meyer
Olivewood, Ebony



Martin Meyer
Spalted Curly Maple

Member's Gallery

March Meeting

Editor's Choice



Bill Brown
Walnut



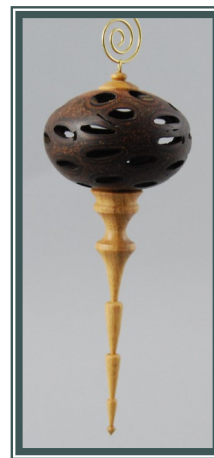
Bill Brown
Cherry Cutting Board



Paul Pycik
Pink Acrylic



Bill Robb
Satinwood, Ebonized IPE,
Chatke COC



Paul Shotola
Banksia Pod, Apple



Gary Hubbard
Red Elm Burl



Paul Dehaan
Buckthorn



Scott Barrett
Macadamia



Gary Hubbard
Rockford, Illinois
Lidded Mesquite
Bowl

I am pretty sure when this piece of Mesquite was in its original state, it was not a very attractive piece of timber, but Gary had a vision and executed it very well.

The inclusion of the natural edge sapwood on one side combined with the primitive crack on the wing provides an interesting contrast with the rich form and color of the piece. The ebony finial attached to the black stripe in the lidded top provides additional elegance and interest.

This piece by Gary illustrates what a vision combined with good technical execution on a difficult winged form can accomplish.

Continuing with the tradition set by my predecessor, I'll make my personal selection each month. You may agree or not, it's a democracy, but I'm the Editor.

It's all in the details



Wayne Bernahl will conduct the Gallery Review at the April 13 meeting.



Photographer, Tom Waicekaskas, hard at work.

Member's Gallery

February Meeting



Martin Meyer
Mango, Pupleheart



Martin Meyer
Walnut, Holly, Bloodwood.

A Closer Look

Jason Swanson

Rich Nye brought three lidded boxes to the gallery in March that really caught my attention. For such small pieces they sure had a lot to offer. Two out of the three had ivory inlays with rose engine work in the ivory. One of the boxes had rose engine 'notches' cut into the body and lid that served not only as surface decoration but also aided in opening the box as a place to grip. The threads were perfectly cut with a jig and the grain lined up beautifully when the lids were screwed on. The only critique I have with these three boxes would be with the Madrone Burl box shaped like a barrel. I think the top needs something - either a lid, finial, or simply remove the disc with the hole in the center of it to make it an open pot. Rose engine work is very interesting and I'm not even sure exactly how a rose engine lathe operates. I've read that it could take a lifetime of experimenting to fully utilize and understand rose engine turning, but I'd have to say that Rich is off to a great start and the quality of these three boxes proves he is having fun with it. Keep up the good work, Rich!



Rose Engine Top



Maple with Rose Engine Top



Madrone Burl

For Sale or Trade**Contact the Editor to post your items**

Dave Forney has a number of items for sale. Contact him at 847-639-6429 or email dave_forney@hotmail.com

Craftsman 10" Radial Arm Saw, model number 9-22038. New in the box, never opened. Paid \$650. Will sell for \$600.

Delta Shop Mate 9" band saw, model BS 100 (bench top), tilting table New in the box, never opened. \$100 new. Will sell for \$80.

Ryobi 16" wide belt sander, model WDS1600, sands stock from 1/8" to 3" thick. With stand and rolling base (locking casters). Lightly used, \$300 OBO.

Solid core raised panel door slabs. 4 raised panels. 30" x 80" Primed.

Slabs only; no latch, knob or hinges. pre-bored. \$20 each. I have 5.

Leigh dove tail jig, new, never used. \$400 new. Will sell for \$300.

I'm also liquidating part of my turned wood collection. Contact Dave for details and pricing. Artists include: John Dickinson, Dick Coddling, Phillip Moulthrop, Mark Lindquist, Luc Gontard, Craig Richardson, Dennis Elliott, Mick O'Donnell, Merryll Saylen, Gene Reinking, Dewey Garrett, Al Stirt, Dan Kvitka, Art Liestman, Mike Scott, Michael Bauermeister, Don Derry, and others. I also have some glass pieces that I'm liquidating as well.

Ring Master #723, 1/2 HP, includes all manuals and instructional DVD, alignment guides, 4 cutter blades, plug cutter & bowl clamp. \$300. RTC 8 1/2 X 40 starter lathe, 8 speeds, \$65. Wilton 12" mini-lathe, 1/4HP, VS, all factory accessories included. \$125. Contact Roger Shackelford 847-836-0963

Extension bed and leg set for Jet 1642. Adds 57" to length. \$175. Dan Goulding 847-536-7817 jjdgou774@scbcglobal.net

New Large pieces of Ambrossia Maple, Flaming Box Alder, Apple and Walnut for sale. These are with natural edges cut from the tree except the walnut which was cut into blocks. Will cut to smaller sizes to meet needs. If interested can call Martin Meyer: cell 773-879-4184 or home 773-631-7668.



New Enco dust collector; 2 bag configuration, 1 hp motor. Price \$50. Contact Clint Stevens 773-852-5023.

Items of interest to woodturners for sale, wanted, trade or free are welcome. Non-commercial ads only, please. To place an ad, contact Al Miotke. 847-297-4877 or amiotke@chamberlain.com

Safety Reminder

Sometimes personal stories are the best way to remind each of us to take safety in our hobby or profession seriously. A few weeks ago I was having an enjoyable Saturday in my shop putting the final touches on a large salad bowl while doing something I had done many times before. I was shear scraping on the inside of the piece when I experienced the dreaded "C" word, "Catch." How could this happen, I wondered. I was taking such a light cut. Well, if the angle of the tool compared to the wood becomes greater than 90° it becomes dangerous. If you have your hand wrapped around the scraper and a finger is above the tool rest when a violent catch occurs, you get a crush wound that rips your skin and results in a trip to emergency room. Luckily, it was nothing a few weeks and some bandages didn't cure, "This time." It's unfortunate that we sometimes need these reminders to always stay alert and TURN SAFELY!

Al Miotke

Monthly Meetings are held on the 2nd Tuesday of each month at Friendship Village 350 W. Schaumburg Road Schaumburg, IL 7:00-10:00 PM 847-884-5000 Join us in the Woodridge Room in the Bridgewater Place building. 7:00pm -10:00pm All are welcome.

Visit our website

chicagowoodturners.com

Membership in the Chicago Woodturners is available to anyone wishing to increase their turning skills through education, discussion and critique. Annual dues are \$25.00 for a single membership and \$35.00 for a family. Visit our website for an application or contact Thomas Stegall Membership Chairman

The Chicago Woodturners is a chapter of the American Association of Woodturners (AAW). Visit their website for more information.

www.woodturner.org



**August 20-22, 2010
Mundelein, IL**

Attendance is \$260 for 3 full days of activities, and includes all meals, access to the Trade Show and Instant Gallery, Hands-On Events on Friday, and all Demonstrations.

Rooms for on-site housing are even more limited than TOC attendance. Staying on-site means your car stays parked, you're on time for that first demo in the morning, and you get to enjoy the relaxing ambiance of USML. You may be thinking that you can register for the symposium later this year, but on-site housing may not be available if you wait. Register today to ensure your spot at TOC 2010 and your on-site housing. For off-site housing options, visit the TOC website.

Questions about registration?
Contact

Jan Shotola
847-412-9781
jshotola@yahoo.com

Turn-On! Chicago 2010

August 20-22, 2010

The Conference Center at the University of Saint Mary of the Lake, Mundelein IL

Let's get back to some basics. For months, we've been talking about the Symposium this, and Turn-On! Chicago that, but many of you may not be aware of what a woodturning symposium is, or what benefit you may receive by attending.

This August, a dozen of the finest turning teachers and artists will present a series of demonstrations covering nearly every topic in the turning vocabulary. Your registration provides full access to any and all of these demonstrations. There is no need to reserve or register for individual sessions. Each demonstration or "rotation" runs nearly 90 minutes. The demonstrator will cover a specific subject in-depth in a private classroom equipped with top-flight A/V systems. Many topics will be repeated throughout the weekend to allow you to attend all of the sessions that you wish.

Featured Demonstrators

Jimmy Clewes

Carole Floate

Binh Pho

Kirk DeHeer

Lyle Jamieson

Dick Sing

Don Derry

John Jordan

Malcolm Tibbetts

Cindy Drozda

David Nittmann

Don Ward

Expect demonstrations geared to every level of turner, from beginner to accomplished artist. Subjects range from tool sharpening, bowls, vessels and advanced forms to specialized subjects including segmented construction, air brush techniques, surface enhancements and more. No matter your skill level or interest, there will be a turning demonstration to answer your questions and inspire your next project.

In addition to the demonstrations, the Trade Show will showcase the latest in turning gear, wood and that next "must have" for your toolbox. Look for plenty of great deals, including "show specials." The Instant Gallery is the place for you to display your best work and see what your peers are making. The gallery will be reviewed by two of our featured demonstrators on Sunday, providing a view from the experts and more inspiration for your next, best work.

Attendance is limited to only 250 attendees. As of this writing, the symposium is nearly 50% sold out, so don't delay in registering. You do not want to miss this opportunity to learn from the stellar line up of demonstrators at Turn-On! Chicago 2010.

Visit the TOC website

www.turnonchicago.com

for details and the latest updates. A printable registration form is available on the website

Turn-On! Chicago 2010

August 20-22, 2010

Each month we'll take a look at Demonstrators and Events at TOC 2010

Kirk DeHeer

Kirk DeHeer is one of the most accomplished teachers and demonstrators around. Working with Craft Supplies USA, Kirk travels the country and has contact with turners of all levels. Is sharpening your tools an issue? Kirk can help. Having problems with your turning gear? Kirk can help.

As a resident instructor at Craft Supplies, Kirk emphasizes the fundamentals of turning, specializing in sharpening tools, proper form, balance, and the essential cutting techniques used in wood turning. Kirk is the author and producer of the popular video "Sharpening Demystified," available through Craft Supplies, Amazon.com and Kirk's own website www.kirkdeheer.com. Join Kirk at his demonstrations to get started correctly, learn to turn with sharp tools and refine your techniques for greater success. Kirk will be available for conversation and personal advice at the Craft Supplies booth in the trade show, as well.



August 20-22, 2010
Mundelein, IL

Friday night is
Hands-On night.
Experience mar-
bling, turn a pen or
two, or just relax
with your friends.

The Conference Center at the University of Saint Mary of the Lake is located on 900+ wooded acres in Mundelein, IL. Just a few minutes north into Lake County, USML is a secluded, quiet escape from the hustle of the city. Everything is provided on-site, including all meals, and even snacks. Once you arrive, you can leave your wallet in your pocket, as everything is included. Housing in the Residence Hall is available as well.

John Jordan

"My Wood Don't Crack." So says John Jordan, and John wouldn't lie. That's the title of one of John's popular demonstrations, scheduled for TOC 2010 this August. His wood doesn't crack because John knows how to select, harvest, season, and turn his wood to get the most out of every log.



John Jordan
Cherry with
Textured surface

A professional turner for over 25 years, John's down-home style belies a wealth of woodturning knowledge. If it works, John lets you know. If it doesn't work, well, expect the same unvarnished truth. Jordan's demonstrations at TOC 2008 were standing room only, and we're pleased to have John return in 2010 for more useful, sensible turning demos.

John will have a booth at the trade show, and welcomes everyone to stop by for good tools and plenty of good advice. Visit the John Jordan website at www.stubbylathe.com.

