



23 years of Art,  
Craft, Technology,  
and Tradition.



The Monthly newsletter of the Chicago Woodturners

May 2010

## April Review: Delicate Vessels with Ultra thin Stems

Clint Stevens

At April's CWT meeting, Alan Carter shared with us the secrets of thin stem turning.

This technique works best with closed grain woods like maple. Open grain woods like oak and ash don't tend to work as well because they fail along the growth rings.

Alan demonstrated putting a small turned vessel on an impossibly turned stem. The vessel came with Alan, already turned with a narrow tenon. A 7 ½ inch long blank would be the stem. It was chucked and rounded with one of the new Easy Wood Tools. The Easy Rougher is one of Alans favorites for this job. For maximum support, the stem was turned from the tailstock toward the drive end. A cone was cut at the tailstock; then Alan turned a socket to perfectly receive the vessels' small tenon.

A conic live center was then used to support the stem from the socket (still at the tailstock.) The live center is only for support and was not tightened so as not to compress the stem which would cause the stem to wobble out of control. Alan switched to a ¼ inch spindle gouge to thin the stem to a thickness of about 1/16<sup>th</sup> of an inch. The stem is turned in short sections from the tailstock toward the headstock. Alan used a finger to counteract the slight pressure from the gouge to prevent the stem from snapping.



Alan Carter

*Continued on Page 3*

### In This Issue

<b>Feature Articles</b>	<b>Page</b>
March Demo review	1,3
Past Presidents Challenge	5
Symposium Updates	15,16
<b>Monthly Columns</b>	<b>Page</b>
Curls from the President.	2
Committee Reports	4
AAW News	4
Meeting Minutes	6
Member's Gallery	9,10,11,12
Calendar of Events	13
For Sale	14

### May Demonstration

#### From Chainsaw to Bowl

Have you been wondering about the differences in chainsaws, how to take care of them, or how to use one safely. How about the proper way to prepare a log for turning. At the May meeting Dan Anderson will show us some of the tricks so the next time your neighbor's tree is coming down, you will be able to harvest the timber for a premium turning blank rather than mulch.



**Curls from the President's Platter**

Phil Brooks



President  
Phil Brooks

***Are you interested in being a mentor, Contact Jan Shotola .***

***Want to test drive a tool from our inventory, contact Don McCloskey***

***Our New Location  
Friendship  
Village is located  
2.5 miles south of  
I-90 and .4 miles  
west of Roselle  
Road at  
350 West  
Schaumburg  
Road,  
Schaumburg, IL***

As we settle in to our new location at Friendship Village, I think back over my last seven years as a member of the Chicago Woodturners. First of all, I think of the great friendships I've developed and the willingness of so many members to go that extra mile to make the club better. Two recent examples are Paul Shotola making the portable lathe and the audio/video setup and Clint Stevens building the portable library. These projects were a lot of work and they did it just because it needed to be done. Then we have Al Miotke and Thomas Stegall who willingly took on the responsibilities of Newsletter Editor and Membership Chairman. Our club is so much better because of members like this. In addition, we have a great group of people to associate with, not only in our club, but woodturners in general. Whether it's one of our own club members, a professional demonstrator, a member of the AAW staff, or a member of another chapter, they all are more than willing to answer any question and help wherever possible.

Another source of information is our extensive library of books, DVDs, VHS videos and magazines. We have approximately 200 items in each of the four categories. Any of these items may be borrowed for a month and are easy to checkout and return. In addition, if you have a particular subject or author of interest, you can ask the librarian to do a search to show all items that fall

into that category. If you want to find something you checked out earlier, but can't remember what it was, you can ask the librarian to do a query to show all of the items you have checked out since we started the database. So don't hesitate to use this resource. It's a great way to get additional knowledge and inspiration.

Talking about a source of knowledge and inspiration, let's not forget our professional demonstrations and hands-on classes. There are very few clubs that offer this level of professional education for such a relatively low price. The demonstrations are available to you as a club member at a nominal fee for an all-day session. We plan on re-starting hands-on-classes after the symposium, thanks to the generous offer from Glenn McMurray to use part of his industrial facility in Geneva. To be sure you don't miss these great opportunities check your latest newsletter for upcoming events.

Finally, let's not forget the excellent demonstrations we have each month given by members of our own club. And if you really want to get some good advice on how to improve your pieces, bring them to the gallery review and have one of our experts tell you how to make them even better. In summary, by utilizing the many opportunities offered by our club, you can dramatically improve your skills and satisfaction as a woodturner. So start next month and I'll see you there.



**Delicate Vessels with Ultra thin Stems Review**

**Clint Stevens**

*Continued from page 1*

Light cuts were used to achieve the very thin profile. Alan explained that if it's necessary to shut off the lathe during the process, start the lathe at minimum speed, and then slowly bring it up to normal operating speed.

Sanding was done with 150 through 400 grit

sandpaper and 3M pads. While sanding, Alan kept his finger on top of the spindle, again to counteract sanding pressure. Finished with several coats of lacquer, then auto polish, the spindle was complete.

This was a great demo, one that definitely added to members skill set. Many thanks Alan, we won't soon forget it.



The Weapon of Choice.



Now that's thin!



The finished Product

**Easywood Tool Review**

**Don McCloskey**

These tools are designed for the mini or pen lathe. It has a unique handle and the carbide cutter that is easy to change. They have a very short learning curve, and can be used with a short learning curve. When the tool gets dull just rotate it ¼ of a turn and continue on. I turned over two hundred pens before it got dull. The finisher tool can also be used for roughing out both wood or acrylics. It can be used for beads, coves, tapered or linear cuts. The finisher was used for turning pens, ornaments , stems open



segmented turnings and bottle stoppers to name a few. This tool is recommended for you tool box. This tool was used by Alan Carter at the April 2010 demonstration at the CWT meeting. A few options for purchasing these tools are Woodcraft, Craft Supplies and [www.easywoodtools.com](http://www.easywoodtools.com). For a demo contact Don McCloskey



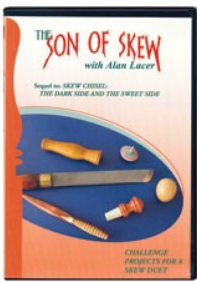
**Library News**

Clint, our club librarian was open for business in April for the first time at Friendship Village and our new portable library cabinet was fantastic. Every video shelf is on full extension slides so you can pull out the shelf to easily view all the material available for checkout. Proof that a woodturner can also do high quality flat work. Excellent Job Clint!



This month I checked out the video by Alan Lacer, *Son of Skew*. I found it to be an enjoyable and educational 2 hrs. In this sequel to his first video, Alan shows us how to make 11 different projects by only using a skew chisel.

Not only does he show the power of the skew chisel but he makes it look easy. The results are crisp lines and a finish right off the tool equivalent to what I get after working thru about 4 grits of sandpaper. It was inspiring and made me want to brush the sawdust off of my skew and give this powerful tool another chance. Its all about Practice, Practice, Practice.



**AAW News and Updates**

**Al Miotke**

While there is a lot of focus on our symposium in August, the AAW's national event is also only a few months away in Hartford Connecticut in June. As always the symposium is stacked with the demonstrations from the best woodturners in the world. One of the interesting additions to this years symposium schedule is the

emerging artist demonstration area. The artists selected this year are Pascal Oudet (France), Nick Agar (UK), David Belser (NH) and Tucker Garrison (NC). Each artist will conduct a two-hour demonstration, showcasing the techniques and processes for which they were selected.



**Nick Agar**



**David Belser**

**Do you have a technique you would like to share? How about doing a gallery review.**

**If interested contact Scott Barrett**

**Upcoming Meeting Agenda**

	Gallery Review	Demonstration
April	Wahne Bernahl	Alan Carter-Delicate Vessels with Ultra Thin Stems
May	Paul Pyrcik	Dan Anderson—From Chainsaw to Bowl
June		Binh Pho - AirBrushing 101
July		Binh Pho - Thin Wall Piercing
August		
September		Clint Stevens—Eccentric Box
October		Darrell Radar—Woodturning 101 "For the fun of it"
November		
December		Annual Christmas Party

Past Presidents Challenge

Paul Shotola

**June Turning Contest- Bring it in Thin!**



As your Past President, one of my goals is to inspire each of us to reach a little further, stretch our capabilities, and attempt a new technique. How can I motivate the membership? Let's try CASH. That usually works. Here's the plan: Inspired by Alan Carter's great demo on turning thin spindles in April, at the June meeting we'll have a little contest. Bring it in Thin! We'll have a jury of our peers to do the judging, and winners will receive cash prizes of \$30, \$20 or \$10. We'll be looking for thinly turned items; spindle work, vessels or bowls. Thin walls and cross sections are the goal, combined with originality, balance of form and execution. That's enough rules.

You are encouraged to get to the lathe and make something thinner than you have ever done. Try a new technique, tool or process. Break a couple pieces in your attempts. That's how you know you're pushing your limits! As David Nittmann likes to say: "If you're not standing on the edge, you're taking up too much room." Bring it in Thin at the June meeting. Have fun, and please turn safely.

***Chicago Woodturners Board of Directors and Committee Chairs 2010***

President	Phil Brooks	847-548-6477	brookspphil@sbcglobal.net	1052 Cheswick Dr	Gurnee, IL 60031
Vice President, Web	Scott Barrett	847-562-9121	dr@bdental.net	46 Bridlewood Lane	Northbrook, IL 60062
Secretary	Andy Kuby	847-317-1841	kubywinslow@comcast.net	2945 Cherokee Ln.	Riverwoods, IL 60015
Treasurer	Jan Shotola	847-412-9781	jshotola@yahoo.com	1865 Western Ave.	Northbrook, IL 60062
Past President	Paul Shotola	847-412-9781	p.shotola@comcast.net	1865 Western Ave.	Northbrook, IL 60062
Newsletter Editor	Al Miotke	847-297-4877	alan.miotke@chamberlain.com	920 Sumac Lane	Mount Prospect, IL
Membersip	Thomas Stegall	309-635-1623	thomas.stegall@aol.com	3470 N. Keating Ave.	Chicago, IL 60041
Librarian	Clint Stevens	773-852-5023	clint.stevens@comcast.net	1635 S. Chesterfield	Arlington Hts., IL 60005
Raffle	Chuck Svazas	708-482-3866	csvazas@sbcglobal.net	707 Bransdale Rd	LaGrange Park, IL
Tools & Equipment	Don McCloskey	847-420-6978	mccloskey@ameritech.net	2028 Gilboa Ave.	Zion, IL 60099
Demonstrations	Binh Pho	630-365-5462	toriale@msn.com	48W175 Pine Tree Tr.	Maple Park, IL 60151
Set-up / Clean-up	Bill Robb	847-931-1876	akmtns1@comcast.net	46 Lone Dr. Unit C	South Elgin, IL 60177
Audio & Video	Lee Svec	847-331-0715	svec@att.net	661A Fieldcrest Dr.	South Elgin, IL 60177
Ornamental Turning	Bill Hochmuth	630-620-8566	wfhochmuth@comcast.net	2S725 Parkview Dr.	Glen Ellyn, IL 60137



## May 2010 Meeting Minutes

The meeting was called to order shortly after 7 PM as about 75 members settled into our new home at Friendship Village. Phil Brooks went through the rules.

Clint Stevens has constructed a new “bookmobile” for the library and tonight was the first appearance. Everything is much easier to find now and we look very professional.

As we noted last month, there has been a shift in personnel with Al Miotke handing over the membership duties to Thomas Stegall in order to work on the newsletter. They both seem to be happy in the new positions. Thomas announced that we had four new visitors/members in attendance. Please check his report to learn more about them.

The Turn On Chicago committee reported that we appear to be on schedule with the preparations for the Symposium August 20-22, 2010. (<http://www.turnonchicago.com/>) As of the meeting we had approximately 137 applications in hand. We should sell out soon. We still have limited space available to stay on site and there are hotels close by. The committee is investigating camping alternatives for those of us who wish to “go native”.

The various committee chairs from Turn On Chicago all made requests for assistance:

Don Mcloskey-Trade Show: Needs help on Thursday and Sunday for Vendor setup and take down. You won't miss any rotations. Call Don (Bill Peterson and Bob Leonard signed up at the meeting.)

Carol Floate-Instant Gallery: Needs people to babysit the gallery during the day. Short shifts and you get to be up close and personal with the work. Call Carol.

Scott Barrett-Video: Needs room assistants. These could be the best seats in the house. Here's your chance to get inside a vessel with John Jordan or at the end of that finial with Cindy Drozda. Call Scott (Wayne Bernahl and Martin Meyer signed up at the meeting.)

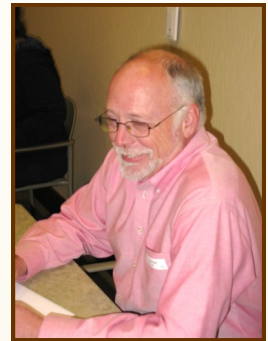
Paul Pycik-Auction: Needs spotters for the auction. Stand at the back of the hall and watch for bidders. Call Paul.

Tom Waicekauskas- Photography: needs candid shots of the symposium. You were going to take them anyway, why not get credit? Call Tom.

Jan Shotola- Registration: needs people to assist with the registration and staffing the desk during the symposium. If your spouse is in rotations all day and made you tag along, here's something you can do while you're waiting for the banquet. Call Jan.

## Andy Kuby

Andy Kuby- Facilities: needs grinders with wolverine jigs, shop vacs, lights, etc. for each of the demonstration rooms. Maybe Malcom Tibbetts will use your sander which of course would make your work that much better. Call Andy to find out what he still needs.



The Midwest Pen turning Gathering will be held in Champaign, Illinois on April 17, 2010. Attendance is free, 9AM to 5PM [www.the-mpg.net](http://www.the-mpg.net).

Dale Moorhouse (847695-4805) from Elgin, Illinois, is looking for information on a Mini-Max T124 Duplicator. If any of the members can help him please contact Dale directly.

The Arlington Heights Senior Center is still looking for volunteers to assist in the woodshop. This is a great opportunity to get that end table built while helping out the Senior Center. All you have to do monitor the shop and you can use the equipment for whatever. Clint Stevens will be doing a couple of shifts but they need more. Please call Paula Barans 847-797-5342 to volunteer or get more information.

The AAW (you remember, the big woodturning group we all should belong to?) is looking for videographers for their symposium on June 18-20, 2010. They are desperate and are offering two free t-shirts, free admission and banquet tickets. You need to do six rotations. Check out the link <http://www.woodturner.org/sym/sym2010/> and call Binh Pho for details.

Chuck Svazas held the raffle with lots of good wood and a Hunter Tool. Not sure how much we raised but he should tell us next month. It should be a lot, everyone wanted the Hunter tool.

Wayne Bernahl reviewed the gallery which included a number of pieces destined for the symposium auction. Pens and Rose Engine work were well represented and we even had a weather vane and a large, segmented cream bucket.

The demonstration on delicate vessels with ultra thin stems was handled by Alan Carter ([www.alancarterstudio.com](http://www.alancarterstudio.com)). Alan showed us how to make a goblet with a stem so thin it wouldn't stand up by itself. Check out the website.

The Past President's challenge was inspired by Alan's demonstration. Paul Shotola challenged us all to “Bring it in Thin” for the June meeting. There will be ruthless criticism and cash prizes.

**Membership Updates**

**Thomas Stegall**

At the April meeting we had approximately 75 members in attendance. Club membership for 2010 also grew to 169. I also want to welcome two new members who joined at the April meeting Dan Bochnovic and Lynn Schafer.

CWT Dues  
for 2010  
\$25.00 for  
an  
individual  
membership  
\$35.00 for  
the  
whole family



**Don't Forget your  
Raffle Tickets in  
May**

\$1 Each  
\$5 for 6  
Value Pack \$10 for 13



**AAW Photo's of the Week in April**



Week of April 5  
Bubinga



Week of April 12  
Bubinga, Ebony



Week of April 19  
Locust



Week of April 12  
Walnut

**He's been at it again!**

Did you notice that Star Wars creation unveiled at the April meeting. Paul Shotola managed to create a portable system with storage, dust collection, lighting, audio, and video hookups. Its all on wheels and is rolled into a closet after the meeting. Its amazing how resourceful creative people can be when it's necessary. THANKS Paul!





# The April Meeting



And the wind is Easterly with gusts up to 20MPH



Nice Truck!



And he just keeps on clicking!



Lots of Great Conversation!



Hey! These guys are working too hard.



Member's Gallery

April Meeting



Roger Lindley  
OT drawer pull



Joe Wiener  
Cherry



Bill Brown  
Walnut offset bowl



Bob Barbieri -  
Nested Hackberry boxes



Bill Brown  
Weather Vane



Roger Lindley  
OT box

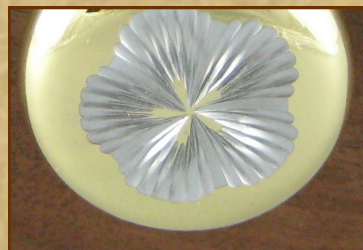


Paul Pycik  
Acrylic Pens



Paul Pycik  
Clock

It's in the Details





**Member's Gallery**



Rich Nye  
Quilted Maple with mineral inlay



Bill Brown  
Walnut platter



Marty Knapp  
Walnut with stained glass

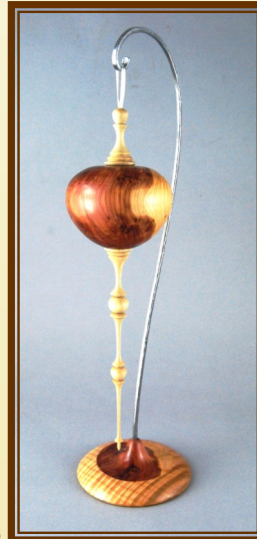
**April Meeting**



Marty Knapp  
Cherry



Joe Wiener  
Spalted pine



Ken Staggs  
Juniper, Maple

**Editor's Choice**



This piece by Marty Knapp caught my attention because of the creative elements that were added after the form was completed.

A well turned shape was just the beginning of this piece. Add to it the router made slits to create a symmetric negative space.

Top it off with two types of leather trim and you have a much more complex and interesting piece.

By thinking outside the box and trying something different, then practicing it on multiple pieces as Marty did, results in something special and possibly a signature style.

**It's in the Details**



Continuing with the tradition set by my predecessor, I'll make my personal selection each month. You may agree or not, it's a democracy, but I'm the Editor.



Member's Gallery

April Meeting



Paul Shotola  
Natural Edge Bowl



Jason Swanson  
Stave Segmented Peppermill



Don Johnston  
Maple Burl Platter



Bill Brown  
Walnut Plate



Rich Nye  
Maple Burl



Rich Nye  
Spalted Hackberry



Jason Swanson  
Segmented Pen

**Paul Pycik  
will conduct  
the Gallery  
Review at the  
May 11  
meeting.**

**Member's Gallery**

**April Meeting**



Robert Lenard  
Segmented Milk



Roy Lindley  
OT Box

**What does OT stands for?**

It's Ornamental Turning. That's the process of adding decorative elements using a Rose Engine. If you would like to know more, visit the CWT website for information on our clubs OT-SIG (special interest group). You can also contact Bill Hochmuth at [wfhochmuth@comcast.net](mailto:wfhochmuth@comcast.net)

**A Closer Look**

**Wayne Bernahl**

My favorite pieces in the gallery last week were the vases turned by Darrell Rader. One might ask why? Were they the prettiest pieces in the gallery? Probably not, and in some people's eyes they might even be viewed as quite plain. Were they the best turned or the hardest turnings to do? Probably not, even though Darrell's work is always well done technically. Did they have an unusual decorative touch or finish? No, in fact they were simply just the wood. Then why would I select them?



I selected them because they were a variation of a single theme. They were a series. Many professional turners work in a series mode. They experiment with a theme until they feel that they have exhausted every idea for that particular series of work and then they grow into a slightly different theme or series. I liked the fact that Darrell used the same wood and very similar shapes to the series. The basic difference was the treatment of the rims including the unintentional design opportunity on the one that I considered the best of the series. Too many of us hobbyists turn one or two pieces and then move to something else. We don't perfect what we started. How many of us explore a given idea or design approach right to its very limits? Most of us don't need to look at the bottom of a piece to know that it was Binh's work or Steve's work or an Ellsworth piece or one from John Jordan. We know the maker by looking at the work because they have developed a style of work that defines them as its maker. Whether we have aspirations of ever becoming a professional or just a hobbyist it is valuable for us

to develop a signature style that we can explore thoroughly. I believe that Darrell was doing just this when he brought the series of vases to our gallery.



## Calendar of Events

### Attention artists, teachers and demonstrators

If you are participating in a craft show, have a gallery exhibition, will be teaching or demonstrating your craft, or know of an event of interest to woodturners, please contact the Editor to add the event to the calendar. A little self-promotion is a good thing. Your fellow woodturners want to know about your events.

### Classes at Woodcraft, Woodridge

Turning 101 with Carole Floate, June 12-14  
Turning 102 (Bowl Turning) with Carole Floate, July 10-11  
Turning 101 with Carole Floate, August 7-8  
Turning 101 with Carole Floate, September 11-12  
Turning 102 (Bowl Turning) with Carole Floate, October 16-17  
Turning 101 with Carole Floate, November 6-7

### Classes at Woodcraft, Libertyville

Turning 101 with Carole Floate, May 15-16

### Classes at Woodcraft, Milwaukee (New location in New Berlin)

Segmented Peppermill with Jason Swanson, May 16 & May 23  
Turn a Natural Edge Bowl with Hank Bardenhagen, May 20  
Intro to the Lathe with Hank Bardenhagen, May 22  
Finishing Turned Projects with Jason Swanson, May 24

### Symposiums

Utah Turning Symposium, May 6-8, Orem, UT

[www.utahwoodturning.com](http://www.utahwoodturning.com)

24th Annual AAW Symposium, June 18-20, Hartford, CT

[www.woodturner.org](http://www.woodturner.org)

Turn-On! Chicago 2010, August 20-22, Mundelein, IL

[www.turnonchicago.com](http://www.turnonchicago.com)

2nd Segmenting Symposium, November 11-14, Arrowmont, Gatlinburg TN

[www.segmentedwoodturners.org](http://www.segmentedwoodturners.org)



To add events to the calendar, contact Al Miotke at  
827-297-4877 or [alan.miotke@chamberlain.com](mailto:alan.miotke@chamberlain.com)



**For Sale or Trade**

Contact the Editor to post your items

Dave Forney has a number of items for sale. Contact him at 847-639-6429 or email [dave\\_forney@hotmail.com](mailto:dave_forney@hotmail.com)

Craftsman 10" Radial Arm Saw, model number 9-22038. New in the box, never opened. Paid \$650. Will sell for \$600.

Delta Shop Mate 9" band saw, model BS 100 (bench top), tilting table New in the box, never opened. \$100 new. Will sell for \$80.

Ryobi 16" wide belt sander, model WDS1600, sands stock from 1/8" to 3" thick. With stand and rolling base (locking casters). Lightly used, \$300 OBO.

Solid core raised panel door slabs. 4 raised panels. 30" x 80" Primed.

Slabs only; no latch, knob or hinges. pre-bored. \$20 each. I have 5.

Leigh dove tail jig, new, never used. \$400 new. Will sell for \$300.

I'm also liquidating part of my turned wood collection. Contact Dave for details and pricing. Artists include: John Dickinson, Dick Coddling, Phillip Moulthrop, Mark Lindquist, Luc Gontard, Craig Richardson, Dennis Elliott, Mick O'Donnell, Merryll Saylen, Gene Reinking, Dewey Garrett, Al Stirt, Dan Kvitka, Art Liestman, Mike Scott, Michael Bauermeister, Don Derry, and others. I also have some glass pieces that I'm liquidating as well.

Ring Master #723, 1/2 HP, includes all manuals and instructional DVD, alignment guides, 4 cutter blades, plug cutter & bowl clamp. \$300. RTC 8 1/2 X 40 starter lathe, 8 speeds, \$65. Wilton 12" mini-lathe, 1/4HP, VS, all factory accessories included. \$125. Contact Roger Shackelford 847-836-0963

Large pieces of Ambrossia Maple, Flaming Box Alder, Apple and Walnut for sale.

These are with natural edges cut from the tree except the walnut which was cut into blocks. Will cut to smaller sizes to meet needs.

If interested can call Martin Meyer: cell 773-879-4184 or home 773-631-7668.



Enco dust collector; 2 bag configuration, 1 hp motor. Price \$50. Contact Clint Stevens 773-852-5023.

**Monthly Meetings are held on the 2nd Tuesday of each month at Friendship Village 350 W. Schaumburg Road Schaumburg, IL 7:00-10:00 PM 847-884-5000 Join us in the Woodridge Room in the Bridgewater Place building. 7:00pm –10:00pm All are welcome.**

**Visit our website**  
[chicagowoodturners.com](http://chicagowoodturners.com)

**Items of interest to woodturners for sale, wanted, trade or free are welcome. Non-commercial ads only, please. To place an ad, contact Al Miotke. 847-297-4877 or [alan.miotke@chamberlain.com](mailto:alan.miotke@chamberlain.com)**

**Membership in the Chicago Woodturners is available to anyone wishing to increase their turning skills through education, discussion and critique. Annual dues are \$25.00 for a single membership and \$35.00 for a family. Visit our website for an application or contact Thomas Stegall Membership Chairman**

The Chicago Woodturners is a chapter of the American Association of Woodturners (AAW). Visit their website for more information.  
[www.woodturner.org](http://www.woodturner.org)

**From The Editor**

**Al Miotke**

If you made it this far you almost finished the newsletter. I hope you enjoyed it. I mentioned last month that a new look for the newsletter was coming. Well, here it is. This is my first attempt at some changes in color and format and I'd like to know what you all think of them. My goal is to make changes that result in a more visually interesting, as well as informative publication. It's your newsletter so all suggestions, comments, and constructive criticisms are welcome. As always, if you would like to see your name in print, contact me by email or phone and we'll make plans to get your article printed. Thanks!



- **AAW News Update**
- **Feature Article Writers**



Paul Shotola



August 20-22, 2010  
Mundelein, IL

Attendance is \$260 for 3 full days of activities, and includes all meals, access to the Trade Show and Instant Gallery, Hands-On Events on Friday, and all Demonstrations.

Staying on-site means your car stays parked, you're on time for that first demo in the morning, and you get to enjoy the relaxing ambiance of USML.

Register today to ensure your spot at TOC 2010 and your on-site housing. For off-site housing options, visit the TOC website.

Questions about registration?  
Contact  
Jan Shotola  
847-412-9781  
jshotola@yahoo.com

# Turn-On! Chicago 2010

August 20-22, 2010

The Conference Center at the University of Saint Mary of the Lake, Mundelein IL

## Featured Demonstrators

Jimmy Clewes	Carole Floate	Binh Pho
Kirk DeHeer	Lyle Jamieson	Dick Sing
Don Derry	John Jordan	Malcolm Tibbetts
Cindy Drozda	David Nittmann	Don Ward

Have you registered? Think you can still be one of the 250 attendees at the Symposium? Feel lucky, there? Don't trust your luck, because the May issue of *Woodturning Design* will have a large display ad for Turn-On! Chicago. Nearly 500,000 (that's half a million) readers will see that ad, visit the website, and vie for a chance to attend TOC 2010. Attendance is limited to 250, and the current registration rate is well over 50%, far beyond the registration rate for April of 2008.

If you need housing on-site, more rooms have been made available to us. We recently reported that housing at USML was in short supply, but an additional block of rooms on campus has been made available to us. Rooms at motels near to the symposium are also available at special rates. Can you tell that we're doing our best to eliminate all of the reasons you may have for putting off registration?

The Symposium is designed, planned and scheduled to provide you with the best possible experience. Great demonstrators, a beautiful facility, hands-on events, trade show, and the instant gallery are all designed to make August 20-22 a great weekend for you (make that a capital You). You've worked hard all year, this is your weekend. Register now and don't be left out.

On Saturday evening, following the banquet, there will be a live auction to benefit the many woodturning education programs supported by the Chicago Woodturners. Paul Pycik has been hard at work arranging for donations from the areas finest turners, gear and wood suppliers from around the country and a few surprises as well. This is your opportunity to add to your collection of turned art or begin your own collection of fine woodturnings. In 2008, artists such as Binh Pho, John Jordan and Kirk DeHeer donated fine turnings to be auctioned off. In 2010, look for plenty of great art, gear, tools, and wood on the auction block. We'll have a lot of fun, raise some money and enjoy the auction. In 2008, Auctioneer John Hill reminded us that "it is ok to bid against your spouse." The same rules apply this year. Join us on Saturday for a fun auction for a good cause.

Visit the TOC website  
**www.turnonchicago.com**  
for details and the latest updates. A printable registration form is available on the website

# Turn-On! Chicago 2010

August 20-22, 2010

Each month we'll take a look at Demonstrators and Events at TOC 2010

## Cindy Drozda—Boulder, Co

Drozda equals Finials. Thin finials, elegant finials. But as they shout on late-night TV: "Wait, there's more!" And there is more. Cindy's designs are classics, frequently referenced by other turners. Elegant boxes with precisely fitted lids and elegant hollow vessels are Drozda trademarks. Cindy frequently demonstrates, teaches classes and exhibits her work in the finest galleries and shows. She has produced a series of videos that are known as the benchmark in turning education videos. Cindy's demos are sure to entertain and educate turners of all levels. Are your designs *left brain* or *right brain*? Cindy, along with David Nittmann, will help you figure that

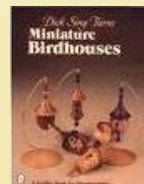
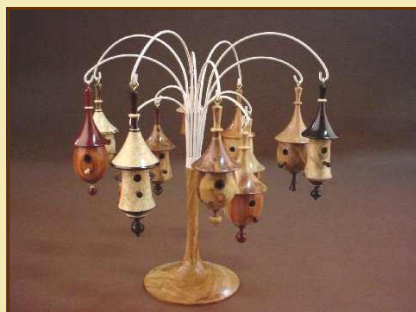
out and learn to use the "other" side of your brain as well. Visit Cindy's website for more details and inspiration: [www.cindydrozda.com](http://www.cindydrozda.com)



## Dick Sing — Joliet, IL

Chicago area turners are familiar with "Father" Sing, a fixture on the turning scene for over two decades. A featured demonstrator at countless symposia (including this year's AAW national event in Hartford and the prestigious Utah turning symposium this year), Dick combines elegant design, no-nonsense techniques and attention to detail that few demonstrators can boast. Author of numerous books on bowls, pens, useful items and whimsical birdhouses, Dick Sing will demonstrate how basic techniques (and a bit of common sense) can

produce stunning art work. Can't make it to Utah or Hartford this year? Not a problem! We'll bring a favorite demonstrator to you, and you'll be a better turner for it.



Two of the popular books authored by Dick Sing.



August 20-22, 2010  
Mundelein, IL

Friday night is Hands-On night. Experience marbling, turn a pen or two, or just relax with your friends.

The Conference Center at the University of Saint Mary of the Lake is located on 900+ wooded acres in Mundelein, IL. Just

a few minutes north into Lake County, USML is a secluded, quiet escape from the hustle of the city.

Everything is provided on-site, including all meals, and even snacks. Once you arrive, you can leave your wallet in your pocket, as everything is included.

Housing in the Residence Hall is available as well.