



# As the Wood Turns

The monthly newsletter of the Chicago Woodturners



"Celebrating our 21st year as a Chapter of the American Association of Woodturners"

## June Highlights:

- Web site update, page 3
- Carole Floate's marbling instructions, page 3
- Symposium updates, page 4
- Fred Gscheidle, June demonstrator, page 5
- Past President's Challenge, page 6
- A Closer Look, page 8

## Next Meeting:

June 10, 2008  
7:00PM

Woodcraft Supply  
1280 E. Dundee Rd.  
Palatine, IL  
847-776-1184

## Regular Features:

- Curls from the President's Platter, page 2
- May Remount, page 2
- Committee Updates, page 4
- Mark Sfirri demo and class, page 5
- Members' Gallery, page 7
- Upcoming Events, page 8
- For Sale Items, page 8

## Rich Fitch Prairie Grass Vase Demonstration

Clint Stevens

Rich is known for his "Prairie Grass Vases." These are simple, elegant vases, usually with off-center openings to hold dried native grasses and perhaps a pheasant feather or two. The woods Rich uses almost always have natural edges, exposed bark, hollow areas, or other apparent flaws which would have lesser woodturners screaming. Somehow, Rich's results are vases that speak with a refreshing truth and honesty.

At our May meeting, Rich Fitch demonstrated how he crafts his Prairie Vases. Design of the vessel, and specific techniques for mounting and "reverse chucking" were covered in detail. Rich paid tribute to the Chi-

cago Woodturners by emphasizing its deep commitment to teaching. Amen, Brother Fitch. I have often thought that without the Chicago Woodturners vigilant emphasis on education, many of our turnings would have all the artistic charm of paintings of poker-playing dogs.



"Looks Like Four of a Kind"  
C.M. Coolidge (1844-1934)

Immediately after praise for education, he proved the point by covering the fundamentals of woodturning in record time. Audience members now have a working knowledge of gouges, wood grains, and basic turning techniques. (Ed. note: safety was paramount in this demo. You will not use a table saw to flatten the bottom of the vase.)

Rich went step-by-step to demonstrate exactly how he made vases that show no sign of chuck or spur marks. Rich prepared a handout which detailed his entire procedure. This article isn't an attempt to capture the

entire method, but there was one very cool piece of woodturning magic. Rich reversed his vase on the lathe for the final time to remove the tenon using a jam chuck that surprisingly resembled a roughed out bowl. The appropriately sized bowl neatly held the vase, which was then secured with plastic flat twine (Ed. note: available at most home centers, it's similar to Saran Wrap). The method works like a charm. The demo vase had no hint as to how it was attached to the lathe. Magic indeed.

Thanks to you, Rich, for a demo that not only taught the steps to your "Prairie Grass Vase" construction, but gave us techniques that can be used on all of our turnings. With your guidance, we can rise above the poker playing dogs and begin to produce artistic turnings of our own.



As a Guest Demonstrator,  
Rich will be demonstrating his techniques at

Turn-On! Chicago 2008

July 25-27



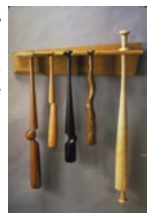
## Mark Sfirri, demonstrating on September 13, 2008

Turner, teacher and innovator for over thirty years, Mark's eccentric turnings and on-center teaching skills will be featured at our meeting place at Woodcraft in



Palatine. Mark will host a hands-on class on Friday, 9/12 and Sunday, 9/14. Sfirri returns to Chicago after a long hiatus, and his classes and demo are sure to be the highlight of the Fall of 2008.

See page 5 for hands-on class registration information



## Curls From the President's Platter

One of the most popular questions asked by woodturners when viewing a piece is "what finish did you use?" I'll talk about some of my favorite finishes later, but first let's break down the finishes into four categories: oil, wax, and the harder evaporative and reactive finishes.

Oil is the easiest and fastest to apply, but gives limited protection. Wax, even though it will be a very thin coat, can be used as an adjunct to oil, or any of the other finishes, to improve surface protection and overall appearance.

The harder finishes can be separated into either evaporative or reactive finishes. When applying an additional coat of an evaporative finish, such as lacquer or shellac, it fuses with the previous coat, so rubbing out the finish is easy and predictable. However, reactive finishes, such as polyurethane

or spar varnishes, dry in layers, so rubbing-out can go through a layer and create unattractive, irregular lines. So if you are going to do much rubbing-out on a finish you had better stick with an evaporative finish.

That is one of the reasons that my favorite finish is lacquer. In addition, it will dry in 15 to 20 minutes, so you can add multiple coats in one sitting. Because it does not film over in a jar, (again, not like a varnish) I can keep it in a jar with a brush in the cap for convenient application. It's available in three sheens (gloss, semi-gloss and satin) and can be purchased as an aerosol can or as a brush-on depending upon the size and shape of the piece to be finished. It's also the best finish for touching up a finished piece.

I use polyurethane varnish when I want a very durable finish and a salad bowl finish

for items that will be used with food. Both are reactive finishes. Wipe-on polyurethane (which is a 50% mixture of polyurethane and mineral spirits) can also be used. It is easier to apply, but offers somewhat less protection. These products can also be purchased with different levels of sheen. As a final note, it appears that the salad bowl finishes are nothing more than a wipe-on alkyd varnish and any of the finishes discussed are equally safe, once the finish is cured and the solvents are gone. A good sniff test will tell you when the solvents are gone.

The bottom line is that you have to decide what you want to accomplish with the finish that you apply. Hopefully this short discussion will help you decide which finish will best satisfy that need.

Phil Brooks



Phil Brooks

**Attending the AAW Symposium in Virginia this Summer? The AAW needs your help as room assistants. Their goal is to have each room staffed by the best video cameramen available. Selected videographers receive free admission to the Symposium in return for running video for six rotations. That's a \$240 value. Symposium dates are June 20-22, 2008 in Richmond, VA.**

**If you would like to be considered, contact Phil Brooks today.**



### Submission guidelines:

Articles should be 125-200 words. Have a longer article? Contact the Editor. We'll work it out. Photos should not be embedded, but sent as attachments to the article. This makes editing much easier.

Please, no double spacing after punctuation. Let the computer do it!

## May Remount: Meeting Minutes

The meeting was called to order by President Phil Brooks with a reminder to observe the "House Rules." Phil provided information on "More Woodturning" magazine, AAW applications, and Free magazines available for the taking. A sheet was passed through the membership to update the "Mentor's List."

Dick Stone presented the nearly completed Collaborative Challenge Carousel. A date was set to work on assembly of the final pieces on May 24. Binh Pho will create the top piece and we still need someone to create a handle. The Carousel should be complete by the June meeting. We need someone to transport it to Richmond for the AAW symposium.

Jan Shotola gave a report on the progress of our Turn-On! Chicago 2008 symposium. Registration is approximately 60% full and prices will increase on June 1. There is still plenty of housing available. Paul Pycik reported that he is still receiving many quality wood-turned items for the auction and thanked those who have contributed thus far.

Treasurer Dave Forney informed us that we have a substantial amount of money in the bank. Membership Chairman Andy Kubly reports that we have 180 members with 5 visitors attending. Two new members joined at the meeting.

Paul Shotola discussed the Past-President's challenge, a fund-raiser

for Phil Brennon. He encouraged the members to put items up for sale and donate the proceeds to "Friends of Phil." This will culminate with an auction of items at the June meeting.

Gary Rotramel conducted the raffle. A demo sample board donated by Binh Pho will be raffled over a two-month period. The "bring-back" item was won by Max Schoenberger from Milwaukee.

The meeting adjourned and was followed by Phil Brooks conducting the Gallery Review. The demonstration was by Rich Fitch, a preview of his symposium demo on Prairie Grass Vases.

Respectfully submitted,  
Jan Shotola

Jan Shotola

## Editor's Notes but hardly "Sparks from the Grinding Wheel"

I wish I could feel more "sparky" this month, as that would make good press. I need to work up a serious rant about something in the turning world that really irritates me. People love to read about other's misfortunes, as exhibited by the inordinate amount of media attention the slackers, criminals and just plain dumb

celebrities receive every day.

The fact is, my only complaint about my little corner of the turning world is a lack of time "standing at the lathe." There's that pesky day job that intrudes into my schedule almost daily, and then there's family and grandkids. Those benign intrusions do seem to eat up a lot of time. I tried

not sleeping, but the spiral catches became too exciting and too numerous in the middle of the night, and the day job suffered as well.

Even without a "sparky" rant, I hope you enjoy this issue of "As the Wood Turns." I welcome your suggestions for articles and ideas for improvements.

Paul Shotola

Chuck Young, your CWT Webmaster, has been in the process of moving our website to a new host. For many years, Glenn McMurray provided web space on his company computers. Our site has grown in size and complexity, so the time has come to move to a commercial hosting service. While this would seem to be a simple process, Chuck assures me in his understated fashion that in our case: "it's complicated." During the transition, updates are running behind, so we are printing Carole's marbling instructions here. Once the transition to our new web host is complete, look for a full update of the site, and expect faster loading and less down time.

## Marbling Instructions

Carole Floate

### You will need:

1. *Carrageenan* – a dry powder extract of seaweed blended with water to make the marbling bath on which to float the color.
2. *Alum (Aluminum Sulfate)* – used as a mordant to bond colors to paper, fabric, etc. Alum water is applied to paper, fabrics, and wood before it is marbled. (use a spray bottle, brush or sponge)
3. *Water-based Marbling Colors* – Concentrated liquid marbling paints (acrylics).
4. *Ox gall* – A nontoxic, natural bovine substance you add to the colors to make them float. Note: *Photoflo* can also be used. Both are surfactants.

**Household items:** Buckets, measuring spoon, blender, rubber gloves, paint jars with lids (small jelly jars are great), newspaper, clothesline and clothespins (for use with paper or fabric), sponge and rags for cleanup, rubber bands and scissors to make whisks and a knitting needle.

**Equipment:** A clean tray larger than the paper/object you plan to marble and at least 2" deep. Pattern making tools – combs, stylists, etc. Pressboards – Masonite boards work well to press papers flat (also the use of blotter paper between the marbled papers is good). One will double as your rinse board (for paper) & cover for your marbling tray. Distilled water is best but tap water can be used to make marbling bath and to dilute your paint. If there is difficulty with the paint on the size try bottled water.

### Directions:

**Alum Recipe:** Add 1 ¼ cups of alum (potassium aluminum sulfate) to one gallon of cold tap water (use bottled water if tap water is not useable). Dissolve completely. Pour alum solution into a spray bottle for convenience. Dampen entire piece to be marbled with the spray bottle. Let dry before marbling.

**SAFETY NOTE:** Alum water is very drying to the skin and may cause irritation. Use rubber gloves or a barrier cream. It can be purchased at an art supply store or grocery store. Note: may need to adjust accordingly. Solution has a long shelf life once dissolved.

**Carageenan Recipe:** 2 tablespoons per 1 gallon of water. (Make this the day before you plan to marble.) Using a blender pour ¼ of the water into the blender and ¼ of the carrageenan. Mix at low speed for about 1 minute. Pour into a clean bucket/bottle with a lid. Do this 3 more times until all the water and the carrageenan is mixed. Stir the gallon to blend all of the mixture. Allow the size to age for about 12 hours. This will allow all the air bubbles to dissipate. Keep in a cool place. Shelf life is limited to a couple of days before it starts to break down. NOTE: Make enough solution to fill your tray. You may use your kitchen blender. This is a food grade product.

**Paint Recipe:** Use the directions on the jar: Mix paint well. Dilute paint with water and one drop of oxgall or Photoflo. Test on a well skimmed bath. Continue to add oxgall or Photoflo one drop at a time if color does not float and/or spread properly on the bath. For more intense color add more undiluted color. SAFETY NOTE: Clean up spills while still wet to avoid breathing dry pigment.

### You are ready to start marbling:

1. Seal the parts of the wood piece that you do not want marbled. Use rubber cement, frisket, tape, etc.
2. Alum the wood piece on the side you want to marble, let dry.
3. Select colors (already adjusted) and stir well
4. Always begin by skimming the bath with strips of newspaper – 3" to 4" wide and length of newspaper.
5. Immediately and quickly throw color covering the bath surface
6. Throw additional colors as desired
7. Move the color into a pattern with the use of combs, stylists, etc.
8. Carefully lower the wood object into the bath at an angle to allow air bubbles to escape.
9. Lift the wood piece out of the bath.
10. Rinse well with cold tap water. Be careful not to touch the printed area.
11. Set aside to dry.

Once dry spray with desired finish and let dry. Apply several coats of finish to achieve desired finish. Sand lightly between coats of finish (0000 steel wool can also be used).

NOTE: Clean up the equipment with water only – no soap. Use a sponge with a scrubber back to remove any paint spatters.

## Symposium Updates

Well, it's just 7 weeks until Turn On! Chicago kicks off! It's been a very long and exciting trip. A lot of hard work and time has been put into this symposium already. But, there is much, much more to do! This month I'd like to introduce you to the latest additions to the rotation schedule and in doing so, I hope to encourage you to get your registration in TODAY (you know who you are!). Also, if you have not already done so, please sign up as a volunteer to help move in, set up, assist a demonstrator, assist in the instant gallery and/or assist with the clean up. There are slots available for all of you. All require a small investment of time and all are essential to the success of YOUR symposium.

So, with that out of the way...the list of demonstrators has been expanded. You have been introduced to David Ellsworth, Alan Lacer, Curt Theobald, Jacques Vesery, Binh Pho, Dick Sing and Steve Sinner. Meet the newest additions to the demonstrator list: Bob Bergstrom, Barbara Crockett, Rich Fitch, Carole Floate, Gary Hubbard, Lyle Jamieson, Jason Swanson and Ed Szakonyi. While your Symposium Committee has coined the term: "Emerging Artist" to describe these worthy demonstrators, all of them have paid their dues, stood at the lathe and developed their own special techniques that they will share with us at Turn-On! Chicago.

Bob Bergstrom is a very active member of the Windy City Woodturners, and past member of Chicago Woodturners. Bob is a teacher by profession and has turned and demonstrated locally. Bob will demonstrate turning the kitchen accessories he has sold at craft shows for years. Techniques will include spindle turning and face plate work using waste blocks.

Barbara Crockett is an up-and-coming woodturning artist. A member of Ohio

Valley Woodturning Guild and Central Ohio Woodturners, Barbara has demonstrated at local and regional symposia to rave reviews. Her work has been included in several AAW exhibits as well as displayed at galleries and local exhibits near her home town of Columbus, OH. Barbara is a retired teacher. She will be demonstrating her "Three-Cornered Bowl".

Rich Fitch, featured on page one of this issue, is a retired high school shop teacher, now pursuing woodturning as a second career. Rich has demonstrated for CWT several times and has proven to be a very informative and interesting presenter. Rich will be demonstrating his signature "Prairie Grass Vases."

Most of you will recognize Carole Floate as another long time member & demonstrator for the Chicago Woodturners. Carole has taught at Woodcraft locally, demonstrated at the Utah Woodturning Symposium in Provo and at several regional events. She is also an accomplished artist exhibiting all over the Midwest. Carole will be turning platters and demonstrating her marbling process.

Another long time member of the Chicago Woodturners and woodturning artist Gary Hubbard will be demonstrating his "Winged Vessels" for us. Gary was instrumental in starting the Northern Illinois Woodturners in the Rockford Area. He has demonstrated locally and his work is exhibited in galleries throughout the Midwest. Gary also enjoys sharing his love of woodturning with customers as he exhibits at Art Fairs.

Lyle Jamieson is an accomplished woodturning artist and demonstrator. Lyle has demonstrated locally for his home club in Michigan, as well as at regional and national symposia. As an artist, he is well known for his

## Marie Anderson

lovely "torso" turnings. Lyle will be demonstrating a "Basic Bowl" for us, highlighting the techniques we all need to produce quality turnings. He will also have a booth in the trade show where his line of turning tools, including the captured boring bar, will be available.

You may remember Jason Swanson for his segmented peppermills that have been displayed at our meetings without fail since he joined the CWT last year. What you may not know is Jason has been turning for only a few years. Jason's demonstrating skills have been honed at his local Woodcraft in Milwaukee where he teaches regularly. He will demonstrate segmented peppermills.

Ed Szakonyi is a full time woodturner, woodturning teacher and woodturning artist. Ed has been a member of CWT since almost the beginning and is responsible for teaching many of our members "the basics." An exceptional teacher, Ed will present rotations on Spindle turning basics and Turning for Production.

We are pleased to present such a varied and knowledgeable group of demonstrators for our first symposium. The featured demonstrators represent the finest teachers and artists in the many facets of turning, and our guest demonstrators are certainly the next wave of turning artists and educators. Join us this July 25-27 for a great symposium, and make sure you attend the demonstrations from the "emerging artists" of woodturning.

To register for the symposium,  
log on to  
[www.chicagowoodturners.com](http://www.chicagowoodturners.com)  
Or call Jan Shotola: 847-412-9781



Barbara Crockett  
"3 Cornered Bowl"



Ed Szakonyi  
Natural Lamps



Gary Hubbard  
Square Goblet



Carole Floate  
Marbled Platter

## Membership News: Who's New

Seventy CWT members attended the May meeting, including new

**Our total membership  
now stands at 183.**

members Dan Goulding from Lake Villa and Larry Fabian from McHenry. A recent new member is Ron McDermott from Chicago. Joe and Jan Ashmead, Charles York, Tom Dinelli, and

Max Schoenberger were welcome guests at the May meeting. At our next meeting, seek out these new members and make them feel welcome.

## Andy Kuby

## On the Raffle Table

**Don't forget !!** This month's raffle is part two of the drawing for the Binh Pho demo piece. Make sure to bring your already purchased raffle stubs to the meeting, and buy plenty of new tickets too. Binh's demo pieces are works of art, and

this one can be the centerpiece of your wood art collection.

We've been getting a lot of donations to the Raffle from club members lately. Your contributions are greatly appreciated. If you don't see your donations on the table

this month, that doesn't mean they won't be appearing soon.

We're still looking for a display stand to feature the "Bring Back" raffle items. Contact me if you have an original idea for a display stand.

## Gary Rotramel

## Ash Logs

FREE For the Hauling.  
Kane County Forest Preserve has 100's of freshly cut Ash logs of various diameters and lengths (some quite huge) they would like to give away. If interested contact Drew Ulberg (630) 649-1135

**Raffle tickets are 6 for \$5.00 and the value pack buys 13 tickets for only \$10.00. Support the raffle, and you support the CWT.**

## At our next meeting

turning.

June 10, 2008

Fred Gscheidle will demonstrate his "Basket Illusion" turnings at the June meeting. The "Basket Illusion" is a fascinating design, first brought to the turning world by Lincoln Seitzman in the late 1980's, and known to most of us as the specialty of Colorado turner David Nittman. Fred studied with David, and will demonstrate the tools, techniques and concepts required to create a "basket illusion"

Steve Sinner will conduct the gallery review, and will bring his finely-tuned sense of proportion and design to bear. Steve doesn't just know what he likes, he knows why he likes it, and will explain the finer points of turning forms.

Contributions to the "Friends of Phil Brennon" raffle will be on the block. See page 6



Steve Sinner

Steve Sinner is a studio artist and part of the CWT contingent known as the "F.B.I."-fast boys from Iowa. A nationally-known demonstrator and artist, Steve will be demonstrating at "Turn-On! Chicago" this July.



Vase with gold rim  
By Steve Sinner

## Club Demonstrators and Gallery Reviewers

Paul Pyrcik

	Demonstrator	Subject	Gallery
June	Fred Gscheidle	Basket Illusions	Steve Sinner
July	Roy Lindley	Coloring & Finishing	Tom Waiscekauskas
August	Dave Neybert	Turning Tools	Chuck Young
September	Don McCloskey	To be announced	Dan & Marie Anderson
October	Josh Connan	To be announced	Pixie Eslinger
November	Phil Brooks	Safety Overview	Paul Shotola
December	Holiday Party		

## Mark Sfirri Demonstration and Hands-on Class Information

Sculptor, furniture maker, woodturner and educator, Mark Sfirri first made his eccentric mark on the turning world nearly thirty years ago. We are very pleased to have Mark return to Chicago to demonstrate his techniques and share his vision.

Mark's demonstration will be on Saturday, September 13 at our meeting space at Woodcraft in Palatine. Admission is \$30.00. This all-day demonstration is certain to inspire and amaze turners of

all skill levels and expertise. His demo will cover his signature multi-axis candlestick, a rolling pin, and other off-center work. Sfirri will not only explain the construction of his pieces, but will share the design knowledge needed to create similar work in your own studio.



There will be more details as the date grows near, but mark your calendar now for this excellent demonstration by a master of the lathe.



### Hands-on Class

Mark's class will be a two-day session, with six students. Day One of the class will be on Friday, 9/12/08, and Day Two will be on Sunday, 9/14/08, flanking the Saturday demonstration on the 13th.

Tuition is \$220.00, and registration is now open. Contact Jan Shotola at 847-412-9781 or [jshotola@yahoo.com](mailto:jshotola@yahoo.com) to reserve your spot in this fascinating class.

Clean-up

Volunteers:

**June:** Kate Rowe & Scott Barrett

**July:** John Parkes & a volunteer

**August:** Dennis Sullivan & another volunteer

**September:** Dan & Marie Anderson

To volunteer your help, contact Bill Robb at 847-931-1876 or [akmtms1@comcast.net](mailto:akmtms1@comcast.net)

## Symposium Room Assistants

Bill Robb

The success of the "Turn on! Chicago" symposium depends upon our club members who are volunteering to work and make this symposium the best possible. Thank you to all of the volunteers for stepping up and helping. The room assistant volunteers will be needed for one rotation (or more) during the time from 1:00 PM Friday, July 25th thru 2:25 PM Sunday, July 27.

I will have an outline of the room assistant tasks at the club meeting on June 10th and July 8th. Please see me to get your copy. You will also have

an opportunity to become familiar with the audio/video equipment operations just prior to each of these meetings. Please try to arrive 15 minutes prior to the start of the meeting. Many of you have used this equipment before; therefore, it would be good to have your input.

If you have not yet registered for the symposium, it would be good to do so while you have the opportunity.

**Important: If you have already volunteered, please email me to confirm your commitment.**

This way I will know that the message has arrived at its intended home. It will save me telephoning you and you spending your "turning time" on the telephone. My email address is:

[akmtns1@comcast.net](mailto:akmtns1@comcast.net) and the telephone number is 847-931-1876.

Thank you for your time and your efforts to make our symposium a success.

Bill Robb, Chairman  
Room Assistant Volunteers

### Room Assistants needed for Turn-On! Chicago

Room assistants are critical to the success of a demonstration. RA's help set up the room for the demonstrator, make certain they have all of the supplies needed, and operate the video cameras during the demonstration.

RA's have the best seats in the house, generally looking over the turner's shoulder!

This important task can make or break a demonstrator's presentation. If you have not done so yet, contact Bill Robb to volunteer.

The work is fun, rewarding and important.

## Past President's Challenge 2008

Paul Shotola

Many of us are familiar with the astronomical costs of home health care and rehabilitation services, possibly first-hand. We can all relate to Phil Brennon's situation, and wish we could help. We can help.

All of us have excess wood and supplies, unused machinery and tools that we never use but "had to own." My challenge to you, fellow woodturners, is to convert those surplus items into cash to help Phil Brennon with his therapy to walk or use his hands once again. I promise that, for us, it will be painless.

### Here's how we can help:

As your Past President, I'm charged with developing challenges to the CWT membership that will improve turning skills. This challenge to you may return Phil Brennon's turning capability to him.

In an effort to raise money to help Mr. Brennon with his rehabilitation, we will hold a silent auction of tools, gear, wood and other items donated for this worthy cause. At the CWT meeting on June 10, there will be a table set up with goods for sale. Each item

will have a silent auction bid sheet. Bidding will close at 9:00 pm, and the winners will be announced. Payment can be cash or check, made out to the Chicago Woodturners. The CWT will collect all funds raised and forward them to the Brennon family.

If you have items to contribute, please bring your goods to the meeting. I'll be there early to help you get organized.

Your contributions and bidding are greatly appreciated.

### The "Friends of Phil" program is a fund-raising event to help past AAW president Phil Brennon recover from debilitating back surgeries. For more info, go to:

[www.woodturner.org/news/philbrennon.pdf](http://www.woodturner.org/news/philbrennon.pdf)

Instructions for individual donations may be found on the AAW website, along with a raffle of a Powermatic lathe.



Turnings by Phil Brennon

## Chicago Woodturners Board of Directors and Committee Chairs 2008

President	Phil Brooks	847-548-6477	brookspphil@sbcglobal.net	1052 Cheswick Dr	Gurnee, IL 60031
Vice President	Paul Pyrcik	630-963-9173	pppyrcik@aol.com	6108 Ivanhoe Ave.	Lisle, IL 60532
Secretary	Jan Shotola	847-412-9781	jshotola@yahoo.com	1865 Western Ave.	Northbrook, IL 60062
Treasurer	Dave Forney	847-639-6429	dave_forney@hotmail.com	707 Laurel Lane	Cary, IL 60013
Past Pres., Newsletter Editor	Paul Shotola	847-412-9781	p.shotola@comcast.net	1865 Western Ave.	Northbrook, IL 60062
Membership	Andy Kuby	847-317-1841	kubywinslow@comcast.net	2945 Cherokee Lane	Riverwoods, IL 60015
Librarian	Bob Fernstrom	847-202-0175	rfernstrom@comcast.net	863 W St John's Pl.	Palatine, IL 60067
Raffle	Gary Rotramel	630-377-5871	garyrotramel@yahoo.com	6N860 Crane Road	St Charles, IL 60175
Webmaster	Chuck Young	847-776-9966	chuck.young@comcast.net	935 N Fairway Drive	Palatine, IL 60067
Tools & Equipment	Don McCloskey	847-872-4781	mccloskey@ameritech.net	2028 Gilboa Ave.	Zion, IL 60099
Audio/ Visual	Scott Barrett	847-562-9121	dr@bdental.net	46 Bridlewood Lane	Northbrook, IL 60062
Demonstrations	Binh Pho	630-365-5462	toriale@msn.com	48W175 Pine Tree Tr.	Maple Park, IL 60151

### Members' Gallery

April's gallery was reviewed by President Phil Brooks. Phil feels that the consistently high quality of the work displayed is a clear sign of the growing capabilities of our members.



Duaine Hietpas  
Segmented  
Peppermill



Al Miotke  
Segmented Bowl



Richard Nye  
Quilted Maple



Josh Connan  
Lilac: carved, dyed



Dave Bucholz  
Maple



Bill Brown  
Walnut, textured rim



John Eslinger  
Cherry



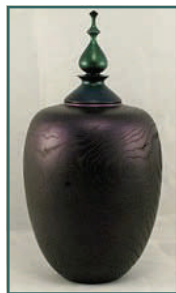
Paul Pyrcik  
Bug Houses



Francisco Bauer  
Ash



Bill Brown  
Poplar & walnut



John Eslinger  
Walnut, dyes



Jason Swanson  
Zebrawood Vessel



Bob Jungmann  
Curly Oak



Dave Buchholz  
Elm



Jerry Sergeant  
Finial vessel



John Parkes  
Natural Edge Maple



Paul Shotola  
Cherry



Phil Brooks  
Cherry & Walnut

### Editor's Choice



Jim Brooks  
Walnut

Jim's work is always first-rate, but I found the shape of this walnut vessel to be nearly perfect. With proportions like this, it could be made of concrete, and still grace any gallery. Pay attention to the flow of the curve from the neck to the widest part of the vessel. It's a continuous line, with no flat spots or points to interrupt the flow. Perfect. Just to make sure that Jim doesn't get a swollen head, compare the walnut piece above to his cherry vessel below. While the cherry piece is a great turning, the line doesn't flow as smoothly. Jim has given us a great learning opportunity by presenting these two vessels, both technically excellent, but one a bit more refined and elegant. Can you see what I see?



Each month, your Editor will select a Gallery turning that he feels showcases a unique design feature, technique or use of material. Selection is purely personal and arbitrary, and probably won't reflect the opinions of anyone but the Editor.

Space limitations prevent us from presenting every gallery submission in the newsletter. For gallery photos from past meetings, visit the CWT website : [www.chicagowoodturners.com/gallery](http://www.chicagowoodturners.com/gallery)



## As the Wood Turns

The monthly newsletter of the Chicago Woodturners

Paul Shotola, Editor  
1865 Western Avenue  
Northbrook, IL 60062  
Phone: 847-412-9781  
Fax: 847-412-9784

Email: p.shotola@comcast.net

Monthly meetings are held on the 2nd Tuesday of each month from 7:00 pm till 9:30 pm  
Woodcraft Supply  
1280 Dundee Rd.,  
Palatine, IL  
847-776-1184  
Guests and visitors are welcome

### Visit our website:

[www.chicagowoodturners.com](http://www.chicagowoodturners.com)  
for more gallery photos, past newsletters, expanded calendar and late-breaking news.

Membership in the Chicago Woodturners is available to anyone wishing to increase their turning skills through education, discussion and critique. Annual dues are \$25.00 for a single membership and \$35.00 for a family. Visit our website for an application or contact:  
Andy Kuby, Membership Chairman

The Chicago Woodturners is a chapter of the American Association of Woodturners (AAW). Visit their website for more information.  
[www.woodturner.org](http://www.woodturner.org)

## A Closer Look

An examination of the art, the turner, and the techniques of a fine turning

Each month, our Gallery reviewer selects a turning that stands a bit above the crowd, one that sets a goal for all of us to work towards. This month, Phil Brooks has chosen this vessel by Michael Kuehl. Standing about 8" tall, the Mallee burl is actually a hollow vessel, with a fitted lid. The finial and stem are African Blackwood.

Michael has been a member of the CWT since September of 2006, and his work is of a consistent high quality. This piece gets the most out of a showy piece of Australian burl, highlighting the natural edge and the burl figure in the lighter

### Michael Kuehl Red Mallee Burl and African Blackwood

sapwood. The stem and finial give the piece a refined look, with the Blackwood contrasting with the colorful burl body.



## Upcoming Events

News of Art Shows, classes, turning symposia, and other events of interest

### June

- *Turning 101 with Carole Floate, June 7 & 8, Woodcraft Supply, Palatine, IL*
- *American Association of Woodturners Symposium, June 20-22, Richmond, VA*

### July

- *Turn-On! Chicago 2008, Woodturning Symposium. July 25-27, Mundelein, IL*

### August

- *Hammer In' 2008, August 2 & 3, John Deere Historic Site, Dixon, IL*
- *Pen Turning 101 with Don McCloskey, August 16, Woodcraft Supply, Palatine, IL*
- *American Craft Exposition, August 22-24, Evanston, IL [www.americancraftexpo.org](http://www.americancraftexpo.org)*

### September

- *Mark Sfirri demonstration, September 13, Woodcraft Supply, Palatine, IL.*
- *Mark Sfirri Hands-on class, September 12 & 14, Woodcraft Supply, Palatine, IL.*

### November

- *Michael Hosaluk demonstration and classes. Nov 1-4. Details to be announced.*
- *SOFA Chicago. Nov 7-9, Navy Pier*

### December

- *Empty Bowls. Dec 6, Oakton College*

## For Sale

Proceeds to benefit the "Friends of Phil" account. See page 6 for details



Delta dust collector, 1 hp., 2 stage portable unit. As new condition. High bid at the June meeting takes this efficient, quiet dust collector home. If you're not using dust collection, now is the time to work safely and keep your studio clean. Worth \$200. High bid at the June meeting. Work Sharp 3000 Sharpening System, as new, includes extra plates and abrasives. \$200 retail plus extras. See it at the May meeting. High bid at the June Meeting.

