



As the Wood Turns



The monthly newsletter of the Chicago Woodturners

22 Years of Art, Craft, Technology, and Tradition

In this Issue

- Stephen Hatcher Demo, pg. 4
- Holiday Party, pg. 5
- Rose Engine Demo, pg. 6
- Ornamental Turning Group, pg. 7
- Pen Vise Tool Review, pg. 9
- Ginkgo Wood, Another Look, pg. 11
- Empty Bowls at Oakton, pg. 14
- Woodworking Show, pg. 16

Next Meeting

November 10, 2009

7:00 PM

Woodcraft Supply

1280 E. Dundee Rd.

Palatine, IL

847-776-1184

Regular Features

- Curls From the President's Platter, pg 2
- Committee Reports, pg 3
- AAW News, pg 8
- Meeting Minutes, pg. 10
- Events Calendar, pg. 12
- Editor's Choice, pg. 17
- A Closer Look, pg 18

Darrell Rader Ornament Demo

November 10

Darrell Rader will share his expertise at turning hollow Christmas ornaments at our November meeting. Darrell uses simple techniques and tools, and insists that all of us can hollow globes paper thin, produce finials with graceful curves and even color our work with a few, easy-to-master (with practice) techniques.



The ornament shown is made of poplar and walnut and weighs, well, almost nothing. How does he do it? Join us in November and all of the secrets will be revealed, just in time for the holidays.

Secret Hint: *Holes*

Rose Engine Demonstration at the October Meeting

Clint Stevens

Woodturning is a skill that can surprise you with its breadth of techniques. At our October meeting, Quad Cities turner Dan Carter drove that point home with a demonstration of a rose engine lathe. If you haven't heard of a rose engine, it's an ornamental lathe in which the headstock rocks in a cam-like motion controlled by a rubber moving against a rosette which turns on a spindle. That's pretty clear, isn't it? If you ever owned a spirograph as a child, you have a feel for the process. Rose engines cut symmetrical lobed patterns on turned work. The results can be simple or exceptionally complex, appearing organic and delicate...like a rose.

Dan brought a home-made rose engine and wowed an enthusiastic *More on page 6.*





Phil Brooks

The Chicago Woodturners officers are elected by the membership and serve two year terms. Your President and Secretary are nominated and elected on odd years, and the Vice President and Treasurer on even years. Our bylaws request a short resume from each candidate to be published in the November newsletter. Elections are held at the December meeting.

Andy Kuby, who is nominated for Secretary, has submitted his bio on page 13

Curls From the President's Platter

Phil Brooks

This month I have to write an article about my background and objectives as a candidate for a second term as president as well as my monthly "Curls from the President" article, so I'm going to use the opportunity to "kill two birds with one stone."

I was born and raised in a small town across the lake from Chicago: Michigan City, Indiana. After graduating high school, I got an Associate Degree in Mechanical Technology from Purdue University Extension. After graduation, I applied for the Air Force's Aviation Cadet Program (the forerunner of the Air Force Academy) and was accepted. Eighteen months later I received my commission and wings as a navigator. I served an additional three years in the Air Force as an electronics instructor. Leaving the Air Force, I took a job as a mechanical engineer for a geophysical instrumentation company providing equipment used for oil exploration. After working there for three years, I decided I wanted to get back into electronics, so I left Texas and returned to Indiana to attend Purdue full time. Two and a half years later I graduated from Purdue with a Bachelor's of Science Degree in Electrical Engineering.

Accepting a job at North American Rockwell in California, I spent four years in Lasers and Electro-Optics Research and three years as a system engineer. I also earned a

Master's of Science Degree in Electrical Engineering from the University of Southern California during this time. After leaving Rockwell, I switched technologies to "underwater acoustics" and spent the next twenty-two years working on weapons and counter-measures equipment for the U S Navy. The majority of that time I was engaged as a System Engineer, Program Manager, Vice-President of Engineering and Programs or in Division Management. When I retired in 1994 I was the Division Manager of the Anti-Submarine Warfare Division of EDO Corporation in Salt Lake City, Utah. While at EDO I wrote and taught numerous courses in computer software, program management and proposal management. Ten years after retirement, I was asked by EDO to prepare and conduct a one week seminar on how to run a company that does business with the Navy. The handbooks I created for use in this course are still in use today. My greatest sense of satisfaction, while working in management, was seeing my employees grow in knowledge and career advancements.

After retiring from EDO, my wife and I moved to Illinois to be closer to our grandchildren. Because I missed working, I spent the next ten years successfully working as a management and computer consultant. During this time I served as the

General Manager of a company in Wisconsin that made natural gas conversion kits for vehicles and the corresponding fueling stations. Over a two year period, this company, near bankruptcy, was turned from losing one million dollars a year to one making a million dollars a year and is still in business today, having made profits every year since then.

That's my background. My objectives as your president were and still are, to give a little more structure to the club and get more people involved. As for getting a little more structure into the club, that's still a work in process, however I feel that, considering the number of people involved in the 2008 symposium and the support given to SOFA and the Woodworking Shows, we are making real progress in member participation. My hope is that during the next two years, because of the higher number of members participating, most members will come to agree with me, that serving as a member of the CWT Board of Directors is an honor and an opportunity to give back to the club and not a penalty to be avoided.

With your help we can accomplish this.

Phil

Membership Updates

At the October meeting, we had a great turnout with 81 of our 183 current members in attendance. I'm sure Dan Carter's excellent demonstration of Rose Engine demonstration helped draw a good crowd. Membership grew by

CWT Dues for 2010
 \$25 for a single membership
 \$35.00 for the whole family
 Please pay by check at the next meeting
 Avoid the **RED** name tag in January

one this month with Ted Welch's return after a brief absence from the club. Welcome back, Ted!

We also had three guests this month. Al Barry of Deer Park is new to woodturning. Richard Houser is currently from Schaumburg but will be retiring to Coralville, IA in the near future. Darryl Descourovéz of Twin Lakes, Wisconsin is primarily a bowl turner with 5 years experience. Welcome to the club, Al, Richard, and Darryl.

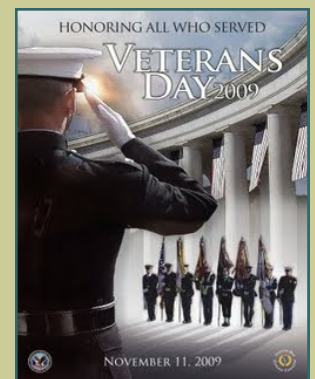
Al Miotke

It's also the time of year when I need to send an early reminder that the 2010 membership will become due in January. The receipt book will be open at the November meeting if you want to avoid the long lines in December and January. The dreaded **RED** name tags will be back in January if you are unpaid so renew early. Rates will remain at \$25 for single and \$35 for family membership. Still the best woodturning deal in town.

Veteran's Day

Wednesday
November 11

Take a moment and thank a Vet for their service.



Contributions to the CWT from the family of Dick Jacobs

The CWT has received a generous donation of tools, books, wood and a lathe from the Jacobs family. Dick passed away this year after a lengthy bout with cancer. His family's generosity will strengthen our commitment to Woodturning Education.

Library News

Clint Stevens

Lee Svec, our A/V chairman, has been working on consolidating the monthly and guest demonstration recordings to DVD for checkout from the library. This is a long, tedious process, but Lee is on the job. Look for DVDs of demonstrations to become available soon. When you see Lee, tell him thanks. If you are a computer/video expert, offer your assistance. He'll appreciate it, and so will your fellow members.

The Jacobs family has donated Dick's collection of woodworking and turning books to the library, including a complete set of Richard Raffan turning books. As soon as these new items are catalogued, they'll be available for checkout.

If you have overdue items, please return them. We will be taking a physical inventory soon, and need to have all of the stray items returned and accounted for. Thanks!

On the Raffle Table

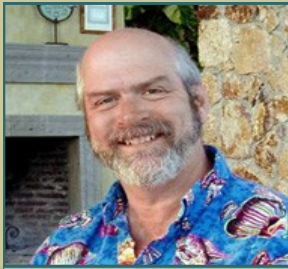
Chuck Svazas

In November, we'll have a selection of turning tools donated by the Jacobs family, including an Ellsworth bowl gouge. If you don't have a quality gouge, here's your

chance. If you do have a serious bowl gouge, well, you really need two.

Remember, your support of the raffle keeps the club going.

Raffle Tickets
 \$1 each
 Get the family pack of 13 tickets for only \$10!

Stephen Hatcher Demonstration October 31, 2009**Clint Stevens****Stephen Hatcher**

**Visit Stephen's
website
[www.stephen
hatcher.com](http://www.stephenhatcher.com)**



Halloween was an amazing treat this year for CWT. Stephen Hatcher visited and delivered a "don't blink or you'll miss something" demonstration. Hatcher's forte is mineral crystal inlay in woodturnings. A key to the method of accomplishing this is to make sure that the wood and minerals have a similar hardness. Stephen Hatcher does this by using bigleaf maple and bloodwood. They have a hardness similar to the mineral crystals he uses, and will therefore sand at similar rates. The minerals serve as the artist's color palette. If some blue is needed, azurite is the mineral of choice. How about some green? Malachite can fill the bill.

Stephen Hatcher has been influenced by living in Washington State. His work reflects a Japanese and botanical inclination with abstract botanical themes and black lacquered lids; some with samurai motifs. Stephen's best known work may be the denuded trees which appear to have gnarled trunks and twisted limbs, perhaps caused by decades on a windswept mountain ridge. His sense of art also uses the wood figure in bigleaf maple (perhaps with the help of dye) to suggest clouds, wind, sky, sunset or even water.

The majority of the day was spent creating an inlaid fern and dragon fly image on a turned platter. The pattern was first sketched on the platter in

pencil. Once happy with the pattern, Stephen identified the base of the fern frond leaflets using a Dremel tool fitted with a circuit board drilling burr.

The fern was roughed out with a v-shaped bit. Like a router, control was maintained by cutting in a clockwise pattern with the Dremel tool. A second pass with a flat-bottomed bit improved the cut. After carving the fern fronds and dragon fly, the top of the platter received a coat of wax-free shellac to protect it from absorbing CA glue or stray colors. A thin layer of Jet Black powder provided a background base and was secured with CA glue. The mineral colors were selected and crushed in a garage sale metal tea pot with the butt end of a cold chisel (really, I don't make this stuff up). The crushed minerals were sorted by size with the help of some kitchen sieves. The coarse minerals were placed in the carved channels first, then the



next sieve sort size, and so on down to mineral powder. Thin CA glue was used again to secure the mineral crystals. After the glue was cured, the platter was mounted on the lathe and mineral crystal coverage was sanded flush beginning with coarse sandpaper. After fine sanding, powdered crystal was used to fill voids and the curing and sanding process repeated. Stephen then carved channels into the rim and laid translucent calcite. His method was similar, but the back of the platter rim was turned down to reveal spectacular translucent rings.

Stephen Hatcher shared his vision with CWT and the techniques to accomplish it. Everyone who attended came away with a deeper understanding of their own vision.



Sunday hands-on class: Jim DeRoche, Mark McCleary, Dick Dluho, Bruce Dearborn, Fran Islin, Len Swanson & Stephen Hatcher

December Holiday Party

Jan Shotola



The CWT Holiday Meeting will be held on Tuesday December 8, 2010 at our usual meeting spot: the festive and spacious Woodcraft Basement. This year the plan is to relax, chat with your old friends, make new friends, and have a taste of Holiday snacks and treats. We'll have door prizes, entertainment, and a gallery of your favorite turnings.

Bring a dish to share. Hot or Cold Appetizers, Salad items, Salty Snacks, Cookies, and Candy are always welcome. CWT will provide sand-

wiches, beverages and place settings.

The holiday gallery is always a favorite. Bring one (or a few) of your favorite turnings. They can be your own, items from your collection, turnings by famous or soon to be famous artists, or turnings that you just think are interesting. Share your personal favorites with the rest of us.

We hope to see all of you, along with your spouses, friends and guests at the December meeting. We promise a relaxed, unstructured social gathering, with lots of great food, great turnings, and great company.

Our annual Holiday Party will feature Indigo Jazz, the elite vocal group from Palatine High School. Indigo Jazz has entertained our membership in the past, and we're pleased to bring them back for another visit.

Under the direction of Steve Sivak, this elite choir is comprised of some of the finest singers and musicians at Palatine High School. It's an all-volunteer choir, rehearsing before and after their regular classes.

In past years they performed a program of traditional Holiday songs, jazz influenced modern works and a rousing rendition of the Monty Python classic, "I'm a Lumberjack and I'm OK," an homage to the CWT membership. In 2006, the group, not knowing what woodturning might be, nicknamed us the "Lumberjacks." Join us in December to see and hear what new surprises they have planned for the CWT.



Indigo Jazz in 2007, disguised as "Lumberjacks"

2010 Guest Demonstrators



Dale Larson



Art Liestman



Graeme Priddle



Dan Carter

2010 Guest Demonstrators

Our Demonstrations Chairman, Binh Pho, has once again arranged for a great lineup of demonstrators for the coming year. Binh strives to strike a balance of subjects and demonstrators that appeal to seasoned lathe artists and new turners alike.

In 2010, we'll have Dale Larson from Ore-

gon. Dale is a bowl turner par excellence, producing gallery level salad bowls. Dale is on the board of the AAW.

Art Liestman is from Canada, and studied with Jacques Vessery. Art's work is playful and imaginative. We've been waiting a long time for a visit from him.

Paul Shotola

From New Zealand, Graeme Priddle returns to amaze us with his vision and innovative techniques. He may trip the smoke alarms.

All this in addition to the fantastic lineup at Turn-On! Chicago in August. It's going to be a busy and entertaining year!

Rose Engine Demo by Dan Carter (from page 1)

Clint Stevens

audience with its possibilities.

As Dan mounted his demonstration piece on the headstock of the rose engine lathe, he explained the importance of using heavy work stock. Woods like African Blackwood are dense enough to hold a well defined cut throughout the process. Ivory was historically used for rose engine work, but modern synthetics such as Corian work at least as well. Dan used

a rosette which transferred a four pointed pattern to the work piece. When the cutting frame was used away from the center of the work piece, the pattern was loosely defined. It had puffiness to it. As the cutting frame was used closer to the center, the rosette pattern transferred a crisp exaggerated version of

itself to the wood. Dan points out that it's even possible to use the rosette to cut patterns based on the mechanical inverse of itself. Couple this with a pumping action to the work piece and it's easy to see that the patterns are only limited by the turner's imagination.

Rose engine work was



to the CWT so that members can try their hand at this craft. If you would like to make your own rose engine,

**Need more O.T.?
Start here:
www.roseengine1.com**

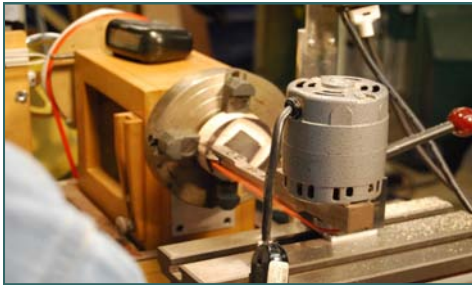
sought after during the Renaissance, but fell on hard times toward the end of the European industrial age. Enthusiastic woodturners have recently helped revive this dormant skill largely with ingenuity and homemade machines.

Steve White of Lindow-White Machine Works, a maker of rose engines, has loaned an MDF rose engine lathe

check the Spring 2007 AAW Journal or the AAW site. John Magill has posted an article based on Paul Fletcher's ingenious design constructed from a single sheet of MDF and simple parts. Once again woodturning has shown its versatility and depth of possibilities. Thanks Dan, and we'll enjoy learning on the lathe.

Ornamental Turning Special Interest Group

Bill Hochmuth



Rose Engine Lathe

Thanks to Steve White and Dan Carter, the CWT has the use of an MDF Rose Engine through the end of the year. On October 21, a number of interested turners met to discuss how best to utilize the lathe.

The attendees decided to formalize the group as a "Special Interest Group" or SIG as a part of the CWT. Anyone interested in ornamental turning is invited to participate. We'll keep the club notified of any meeting or events planned. I have agreed to be the clearing house for info on the group's activities, at least through 2009.

My contact information is on the Officers roster in this newsletter.

The members present at our meeting agreed to pass the Rose Engine around, giving everyone

a chance to experiment with its capabilities and share our experiences. Jon Keith, who has some OT experience, was the first to take the lathe home and try it out. We'll keep a log book of our experiences, and hope to have a meeting after a number of turners have tried the machine out to discuss our findings and plan for the future. We'll keep everyone posted.

We are planning a trip to the Lindow-White shop in St. Louis in January. Steve White has graciously invited us to come to the shop, try out their lathes and share our experiences. The dates are January 8-10, 2010. If you want to participate, please contact me.



Initial Ornamental Turning group: Paul Shotola, Dan Anderson, Marie Anderson, Paul Pycik, Carole Floate, Bill Hochmuth & Jon Keith with the MDF lathe



The MDF Lathe showing the rosette (cam) and rubber (cam follower)



OT work from Jon Keith using the MDF Rose Engine

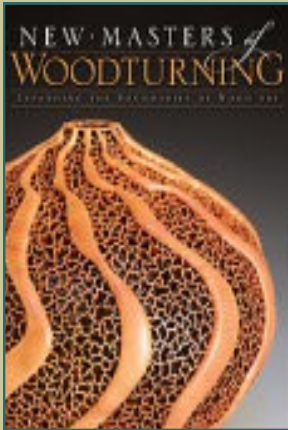
2009 Monthly Meeting Events

Scott Barrett

MONTH	DEMONSTRATION	GALLERY REVIEW
November	Darrell Rader: Christmas ornaments	Marie Anderson
December	Holiday Meeting: See page 5 for details	



Visit the AAW
website:
www.woodturner.org



Kevin Wallace and Terry Martin's new book: "New Masters of Woodturning" from Fox Chapel Publishing

AAW News and Updates

Al Miotke

To most of us the 2010 AAW Symposium may seem like a long cold winter away, but the AAW board of directors and committees are hard at work preparing for the 24th annual event in Hartford Connecticut which opens on June 18th. A link to information about the symposium has been created and can be reached from the homepage of the AAW website (www.woodturner.org). In the coming months you will see increasing information added about demonstrators, seminars, and special activities, so periodically check it out.

A few months ago I mentioned the symposium's special exhibit theme: "Maple Medley – an Acer showcase." Recently, the POP committee of the AAW (Professional Outreach Program) invi-

tational exhibit theme was announced. You are sure to see some of the most creative turnings possible supporting this year's theme: "Teapots." These two special exhibits plus the instant Gallery should make for a great event. Symposium dates are June 18-20 in Hartford, CT.

SOFA Chicago 2009 ran through November 8 at Navy Pier. The AAW hosted a special exhibit at this year's event titled "Influence & Inspiration – the Evolving Art of Woodturning." It is an exhibit focused on emerging artists and their mentors. A highlight of this exhibit was a panel discussion moderated by Kevin Wallace, co-author with Terry Martin of "New Masters of Woodturning." The panelists were Binh Pho and Joey Richardson

along with the talented father and son team of Hans and Jakob Weisflog. This panel focused on the value of mentors, and how a mentor can facilitate the growth of an artist as a mentee, or student. We'll have a full report on SOFA in next month's newsletter.

For the segmented turners out there, the segmented chapter of the AAW has been formed and website activity has been brisk with photos and forums at www.segmentedturners.org. The 2nd segmented symposium has also been scheduled and will be held at Arrowmont from November 11 - 14, 2010. If you enjoy gluing two or more pieces of wood together before turning on the lathe, you have to check it out.

Chicago Woodturners Board of Directors and Committee Chairs 2009

President	Phil Brooks	847-548-6477	brookspphil@sbcglobal.net	1052 Cheswick Dr	Gurnee, IL 60031
Vice President, Web Master	Scott Barrett	847-562-9121	dr@bdental.net	46 Bridlewood Lane	Northbrook, IL 60062
Secretary	Carole Floate	847-295-2631	cfloate@yahoo.com	200 W. Witchwood	Lake Bluff, IL 60044
Treasurer	Jan Shotola	847-412-9781	jshotola@yahoo.com	1865 Western Ave.	Northbrook, IL 60062
Past Pres., Newsletter Ed.	Paul Shotola	847-412-9781	p.shotola@comcast.net	1865 Western Ave.	Northbrook, IL 60062
Membership	Al Miotke	847-297-4877	alan.miotke@chamberlain.com	920 Sumac	Mount Prospect, IL 60056
Librarian	Clint Stevens	773-852-5023	clint.stevens@comcast.net	1635 S. Chesterfield	Arlington Hts., IL 60005
Raffle	Chuck Svazas	708-482-3866	csvazas@sbcglobal.net	707 Bransdale Rd	LaGrange Park, IL 60526
Tools & Equipment	Don McCloskey	847-420-6978	mccloskey@ameritech.net	2028 Gilboa Ave.	Zion, IL 60099
Demonstrations	Binh Pho	630-365-5462	toriale@msn.com	48W175 Pine Tree Tr.	Maple Park, IL 60151
Set-up / Clean-up	Bill Robb	847-931-1876	akmtns1@comcast.net	46 Lone Dr. Unit C	South Elgin, IL 60177
Audio & Video	Lee Svec	847-331-0715	svec@att.net	661A Fieldcrest Dr.	South Elgin, IL 60177
Ornamental Turning SIG	Bill Hochmuth	630-620-8566	wfhochmuth@comcast.net	2S725 Parkview Dr.	Glen Ellyn, IL 60137

At Our Next Meeting: November 10**Paul Shotola**

Marie Anderson will conduct the Gallery Review. A member of the CWT for nearly 15 years, Marie is an active participant in the club. She has served on the board in many capacities, and was instrumental in the success of Turn-On! Chicago 2008, our first symposium. Her specialty at the lathe is miniature turnings. Turning small requires a delicate touch and a practiced eye. She'll bring her experience to the gallery table this month, so bring your work in. Marie's insights will help you become a better turner.

Darrell Rader, a 10 year veteran of the CWT will demon-

strate his Christmas ornaments, as noted on page 1 of this issue. Look forward to an interesting and informative demo, just in time for the holidays.

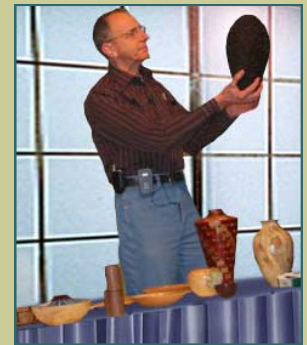
We'll be detailing the Guest Demonstrator lineup for 2010, as reported on page 6.

When you arrive at the meeting, check in with Membership Chairman Al Miotke. Make sure we have correct phone numbers for you, including a cell number. If the weather turns nasty this winter and a meeting or other event is cancelled, we need to be able to reach you.

See you at the meeting!



Marie Anderson



Darrell Rader

Tool Review**Roger Shackelford**

Ed. Note: In September, an interesting item was on the Raffle Table. Donated by Rockler, it was a vise for the drill press designed for drilling pen blanks. In all honesty, some folks thought it was a classic "solution for a non-existent problem." The unit holds pen blanks for drilling and has a screw feature for pressing pen parts together during assembly. It's a well-made unit, sporting replaceable backing plates for controlling "blow out" when drilling. Admittedly, I'm not much of a pen turner, so I didn't know how to evaluate the vise. Roger Shackelford won Rockler's donation in the club raffle, so I asked Roger and Tim Barrett to give it a workout, and report back to the club. Here are Roger's comments:

After not so quietly lusting after the Rockler Pen Press for months, I was lucky enough to win one in the CWT raffle. As advertised, the RPP is great for drilling and pressing pens. Care must be taken though, because if you drill too down too far when making your blank, you will drill into the large screw that moves the vise mechanism. Knowing that, it is a very useful pen making tool.

By now you're probably thinking "yeah, yeah, I know all that, fur face. What else can it do?"

Well, with a little imagination you can use it for carving, chip carving on gun stocks, soldering, making fishing lures, painting and cleaning ceramics, flowers, et al. All sorts of precision work can be done on the RPP.

It takes the place of bulkier tools and machinery, and saves a great deal of time and space while multi-tasking.

If you have a few bucks burning a hole in your pocket, go get one!



Pen Press/
Drilling Jig from
Rockler
Woodworking
Tools
www.rockler.com

CWT Mentoring Begins at November Meeting 5:30 PM

Mentoring is the cornerstone of turning education. The CWT has supported and encouraged mentoring programs in various forms since our inception, 23 years ago. In November, Dan and Marie Anderson will be at Woodcraft at 5:30 PM to help members (especially the newer turners amongst us) solve their problems and get started with solid techniques. Bring your gnarly wood, tools that won't cut and your questions to the meeting. Dan and Marie will help you get started in the right direction.

October Meeting Minutes

Carole Floate

CWT Members Meeting Minutes – October 13, 2009

Commenced: 7:00pm

Adjourned: 9:35pm

Opening Remarks:

Phil Brooks thanked Dan Carter (Quad City Woodturners) for attending our meeting and presenting the "rose engine". TOC members should provide final changes to the TOC schedule, WBS and budget after the meeting. See Jim Wickersham to volunteer for sitting the booth at the Wood Workers Show at the Schaumburg site. He thanked Clint Stevens for demonstrating "Sphere Emerging From a Cube" in September. Alan Carter, will do the Gallery Review this evening. Darrell Rader will be demonstrating Christmas ornaments at the November meeting. Elections for President and Secretary will be held in December. Nominees are: Phil Brooks for President – Nominated by Darrell Rader and seconded by Chuck Svazas; Andy Kuby for Secretary – nominated by Paul Shotola and seconded by Chuck Svazas.

Empty Bowls, Freedom Pens, tools - Don McCloskey:

Empty Bowls at Oakton community College will have a silent auction; can donate anything – bowls, pens, bottle stop-

pers, etc. Our goal is to donate 50 pieces from our club. All proceeds go to the local food pantry.

Pens are due November 7th for the Freedom Pens event at Woodcraft.

Membership Report – Al Miotke:

Total membership of 183; 1 returning member – Ted Welch. There were 3 guests – Richard Houser – Schaumburg, IL; Al Barry – Deer Park, IL; Darryl Descouvez – Twin Lakes, WI.

Greeters Program – Sandy White:

Currently we have 5 volunteers to help with greeting new members. We need 3 more to cover absentees, etc. Generally there would be a 10-15 minute intro on who and what CWT is all about.

Treasurer's Report – Jan Shotola:

Jan Shotola gave a report on the balance of our account. She also mentioned that there are still 3 openings for Stephen Hatcher for the Sunday class on Nov. 1. The cost is \$80 plus lab fee. There is a demo with Stephen Hatcher on Saturday, October 31 from 9am-5pm.

Raffle – Chuck Svazas:

The raffle winners were: 2 wood blanks of wood – Tim Barrett; 3 pepper mill kits with one blank – Bonnie Evans; Drill bits

& coffee cups – Chuck Svazas; Pen kit – Roger Sikes; bring back item – Roger Shackelford.

Other:

Phil Brooks – Woodcraft is having an October Fest on October 24 & 25. Please attend and support Woodcraft. Paul Shotola mentioned the mentoring program. Mentors should sign up again due to a new list being necessary. Jan thanked Mary Olson for the cookies she donated for the evening. Phil Brooks talked about SOFA – what it is, when it is and that there are over 100 galleries attending from all over the world. A must SEE. Phil also asked for volunteers to help set up the woodturning demo area as well as clean up after each demo. The hours for SOFA and our demo area are: Friday – 5 one hour demos; Saturday – 4 one hour demos; Sunday – 4 one hour demos. Several of the demonstrators are: Betty Scarpino, Art Liestman, Molly Winton, Binh Pho, Don Derry, Stephen Hatcher, Dale Larson.

Gallery Review:

Alan Carter honored us with the critique of our instant gallery.

Cleanup:

Bill Robb and volunteers. Respectfully submitted, Carole Floate, Secretary

Ginkgo Wood, another look

Rich Fitch



Ginkgo Biloba was common 175 to 200 million years ago, when dinosaurs

roamed the earth. This primitive tree is also known to some as the Maidenhair Tree. It is considered the oldest living tree species on earth. Ginkgo is monotypic. That is, in the ginkgo family there is only one species in one genus — the only surviving member of the ancient and primitive ginkgo family. Ginkgo has been cultivated in East Asia for hundreds of years. Numerous reports mention the existence of large specimens, some more than a thousand years old, at ancient temples in Japan and China. The tree was first introduced to North

America in 1784 in the garden of William Hamilton at Woodlands near Philadelphia. Mature ginkgos are said to reach over 100 feet in

height. Its longevity as individual trees and a species in general can, in part, be attributed to its exceptional resistance to pests and resiliency to destruction by fire. It is also extremely tolerant of air pollution, thriving in the harshest urban environments.

Ginkgo Biloba testifies for Darwin's theory of 'survival of the fittest.' Its history of longest survival has made the tree a symbol of longevity amongst people. Apart from being an icon as the toughest species, the tree has also enamored many gardeners and painters by its beauty. From the turner's point of view, it is closed grain and pleasant to machine, but is rather plain in distinct grain patterns. The bark tends to stay fixed on the wood; it is on the soft side, similar to box elder and is one of the best for burning images or pyrography.



A Ginkgo Biloba survives even this

The Japanese ginkgo plantations were bombed during the atomic bomb attacks on Hiroshima on August 6, 1945. When the same trees were examined in September 1945, it was found that the trees had survived the brutality without much damage. A Ginkgo tree located 1.1km away from the epicenter, next to the temple, had begun to bud despite the blast. The temple however, was completely destroyed and had to be rebuilt in 1994; when it was decided to leave the tree there and build the temple around it. As the tree survived through the most non-conductive conditions, it became a 'bearer of hope' for the people.

In October, Marie Anderson wrote a fascinating article on the Ginkgo Biloba, inspired by Rich Fitch's most recent Prairie Grass Vases.

This month, Rich Fitch adds to our knowledge of our favorite material:
WOOD

To volunteer your help at our events contact Bill Robb
akmtns1@comcast.net
847-931-1876

Thanks to the volunteers at the October Meeting

Mary Olson (the cookies were awesome) & George Evanson

To add events to the calendar contact Paul Shotola
p.shotola@comcast.net
847-412-9781

Any events of interest to the CWT membership are welcome.

Meeting Volunteers

Bill Robb

Stephen Hatcher Demonstration Oct. 31 Volunteers

Set up/ Clean up: Thomas Stegall, Mary Olson, Joe O'Malley, Don Hamm, Bob Flaherty, George Evanson, Kris Southerland

Coffee: Clint Stevens

Donuts: Don Heard

Ice & Soft Drinks: Mary Olson

CWT Meeting Volunteers
November 10:
Rich Fitch, Thomas Stegall, George Evanson, Don McCloskey, Kris Southerland

Thanks to all of the volunteers, the Stephen Hatcher demonstration and classes went well. Your efforts made a great presentation for everyone.

We'll be looking for lots of volunteers for the December meeting. Sign up in November, your help is appreciated

Upcoming Events: News of classes, Symposia and other events of interest

November

- *Pen Turning 1, Don McCloskey, November 14, Woodcraft Palatine*
- *Turning 101, Carole Floate, November 14&15, Woodcraft Woodridge*
- *Segmented Peppermills with Jason Swanson, November 8 &15, Woodcraft, Milwaukee*
- *Sharpening Class with Jason Swanson, November 12, Woodcraft, Milwaukee. Includes Wolverine and Tormek sharpening.*
- *Turn an Inside Out ornament with Melanie Wegner, November 19, Woodcraft Milwaukee*
- *Pen Turning 1, Don McCloskey, November 21, Woodcraft Woodridge*
- *Turning 101, Carole Floate, November 21 & 22, Woodcraft Palatine*

December

- *Empty Bowls at Oakton Comm. College December 5. See pg. 14*
- *The Woodworking Show, December 11-13. See pg. 16*
- *Turning 102, Carole Floate, December 12&13, Woodcraft Palatine*

Board Nominee Bios

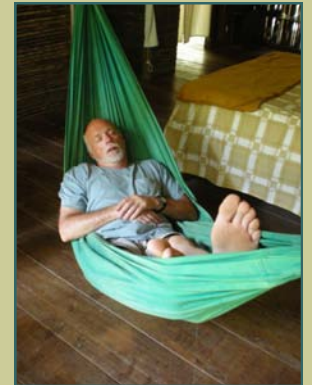
After spending years trying to shed the responsibility of keeping track of the emails, birthdays and spouses of our over 200 members, Mr. Kuby was recently shanghaied into accepting the nomination for Secretary (it should be noted that he did

Andy Kuby has been nominated for Secretary, and in accordance with the CWT by-laws, he has included his bio for publication.

not attend the meeting). A proponent of fonetik spelling (he is a licensed architect), Andy is fond of commas,

Elections at the December Meeting

(parenthetical remarks) and run-on sentences, while generally a good listener, he is easily distracted while multitasking so you can expect numerous interruptions to request clarifications. A recovering procrastinator, he will most likely require at least one reminder to submit the minutes for publication, leaving plenty of time for corrections. As a team player, he will probably expect others to do most of the work in any case. Mr. Kuby believes he was nominated so the rest of the board could keep an eye on him.



Turnings from Andy Kuby



Turn-On! Chicago 2010

August 20-22

Mundelein, IL

Midwest Woodturning Symposium

Featuring:

Jimmy Clewes

Kirk DeHeer

Don Derry

Cindy Drozda

Carole Floate

Lyle Jamieson

David Nittmann

Binh Pho

Dick Sing

Malcolm Tibbetts

Don Ward

"Someone's bowl is always empty."

Empty
Bowls
At Oakton
Saturday, Dec. 6

Last Year's Poster

This year, the
event is on
December 5th



**Want to attend
the Empty
Bowls event?**

Saturday
December 5th
at Oakton Com-
munity College,
1600 E. Golf Rd
Des Plaines, IL
A donation of
\$12.00 includes
lunch and a
hand-made
bowl.



Empty Bowls at Oakton College, December 5, 2009

Marie Anderson

The Chicago Woodturners have once again been asked to donate turned items for the silent auction at the "Empty Bowls" event at Oakton Community College. Held Saturday, December 5, 2009 at 10:30am – 2:00pm, this is a charity event that raises money by selling ceramic bowls created by the OCC ceramic studio for a \$12 donation per bowl AND a silent auction of various handcrafted bowls and items generously donated by professional potters, local schools, CWT and others in the community. There will be musical entertainment and for your \$12 donation, a simple meal of soup and bread will be served as a reminder of those in need worldwide. All monies donated will go directly to help support the Chicagoland Food Depository which distributes to local food pantries. Monies raised go directly to the local food banks. Empty Bowls does not take a share of the contributions. All money raised is distributed locally.

With the economy the way it is, these food pantries have been hit hard. The Chicago Woodturners have always been very generous with donations to this cause. We are

asking *you* to bring in any turned item – Bowl, Box, Jewelry, Candle Sticks, Hollow Vessel, Goblet, Pen/Pencil, any nicely finished piece to "Give Back" to the community. Let this be your excuse to get to the lathe and TURN SOMETHING! Come on, you know you have a roughed out bowl that NEEDS to be finished! You know you were just waiting for an excuse to turn...well, here it is!

Bring your finished items to the November 10th meeting. If you cannot make the meeting, just get your pieces to Woodcraft by December 1st and they will still be picked up and delivered to the event. If you can't get to Woodcraft, contact Don McCloskey, Paul Shotola or any CWT Board Member to arrange pickup. We have a goal of 50 turned pieces this year. Please, help us reach this goal!

Remember, ***someone's bowl is always empty.***

If you are searching for holiday gifts, especially if you are trying to break the "Made in China" cycle, artisan-made bowls for a worthy cause are always a good choice. Your friends and family will enjoy their gifts, and you can do your part for the less fortunate, right here in your own community.

Members' Gallery

October Meeting



Mark Johansen
Mixed Woods vessel



Bill Brown
Spalted Maple Bowl



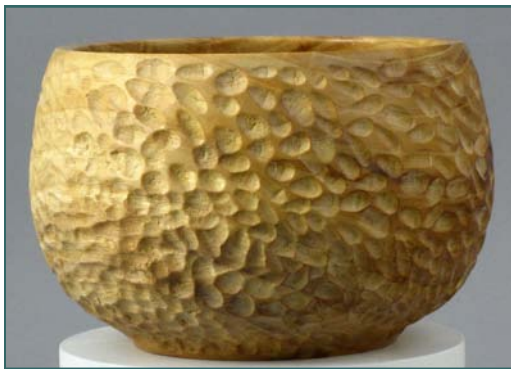
Mark Johansen
Satinwood Bowl



Ken Staggs
Natural Edged Mushroom



Roger Shackelford
Osage Orange and Buffalo
Horn Pens



Richard Nye
Carved Honey Locust Bowl



Don McCloskey: Acrylic Pen
For a Breast Cancer Awareness Auction



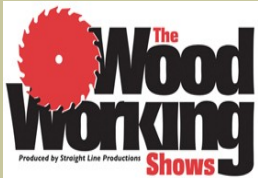
Ted Welch
Apple Burial Urn

It's all
in the
DETAILS



The Wood Working Show December 11-13

Schaumburg, IL



The Wood Working Show comes to Chicago December 11-13 at the Renaissance Hotel in Schaumburg.

The CWT will have a demonstration booth at the show, along with nearly every other wood-working and turning vendor you can imagine. Stay tuned for details on how you can participate.

Members' Gallery



Don McCloskey
Pen in Birch with inlays



Roger Shackelford
Maple Bowl



Al Miotke
Maple Burl Bowl



Richard Nye
Madrone Burl Bowl

October Meeting



Bill Robb
Threaded nut & bolt
African Blackwood



Bill Brown
Butternut
Bowl



Bill Robb
Tape Measure



Al Miotke
Segmented Pierced vase

Members' Gallery

October Meeting

Editor's Choice

Mark Johansen
Pen from golf club parts



Bill Robb
Open Segmented
Goblet



Editor's Choice



Richard Nye
Spalted Maple Hollow vessel



Ken Staggs
House plant ornaments



Phil Brooks
Bottle Stoppers



Darrell Rader
Box Elder Cowboy Hat



Jim Wickersham
Segmented Bowl



Mark Johansen
Japanese Pine Root
vessel

I actually own a set of golf clubs. I'm not certain why. They would be more useful if they were converted to pens, as Mark has done.

Here's a clever and imaginative use of materials. Having the contrast band on the bias adds more interest, and the combination of the brass and stainless steel is a striking touch.

This is a well-made pen, with smooth joints and a proper fit of the mechanism.

All in all, a nice pen, and the clever use of the re-purposed golf club makes it even more interesting.

And, It is certainly more useful and satisfying to use than my golf clubs.



Monthly meetings
are held on the
2nd Tuesday of
each month from
7:00 pm till 9:30 pm

Woodcraft Supply

1280 E. Dundee Rd.
Palatine, IL
847-776-1184

Visit our website

chicagowoodturners.com
for more gallery pho-
tos, past newsletters,
expanded calendar
and late-breaking
news

Membership in the Chicago
Woodturners is available to
anyone wishing to increase
their turning skills through
education, discussion and
critique. Annual dues are
\$25.00 for a single mem-
bership and \$35.00 for a
family. Visit our website for
an application or contact
Al Miotke
Membership Chairman

The Chicago Woodturners is
a chapter of the American
Association of Woodturners
(AAW). Visit their website for
more information.

www.woodturner.org

A Closer Look

I guess you could say I was bowled over by the collection of pieces brought in for the gallery review at the October meeting, since the majority of it was, indeed, a bowl of one sort or another. Not that there's anything wrong with that, of course, and there were some excellent examples of the turner's art on display. The non-bowl contingent was also present and in fine form, but in the end, I chose Roy Lindley's elegant offering.

This piece is typical of Roy's style; simple, refined shapes, thin walls, and a dyed exterior. He shows that you don't have to get elaborate or complicated to produce a high quality, aesthetically pleasing turning. The shape of the bowl is very well proportioned and the sides have a smooth parabolic curve that starts and ends just where it should. If the curve were continued upward at the top, it would start to look heavy and awkward. Any further in at the bottom and it would feel "tippy," for lack of a more academic term. The foot adds just enough height to visually lift the piece and give it the lightness it needs. The thin walls are also appropriate, as thicker walls would weigh it down and cancel out the gracefulness it now possesses.

Roy's signature use of color on the outside is a compositional element that adds additional interest. It helps define the shape more clearly than a non-dyed surface would and provides a bit of visual kick. The red works well with the amber tones of the maple. A different color like green or blue might fight the balance between the inside and outside. Since this is an open shape, your eye sees both sides somewhat equally, so the harmony of two colors within a fairly narrow wedge of the color wheel is beneficial. A tall piece with a less visible interior might be a good choice for more contrasting color combinations, as Roy has done in the past.



Roy Lindley
Dyed Bowl

In this type of piece, good technique is essential. There's no place to hide any mistakes; scratches, uneven walls, gloppy finishes and so on would scream "What are you doing? This is unacceptable!!" When you run your hand along the surfaces, both inside and out, you notice that they are smooth with no bumps or ridges and have a silky feel. There are no sanding scratches and the dye was applied very evenly with no splotches or unevenness. The glossy finish is also appropriate and gives it a glass-like liquid quality. It helps emphasize the shape because of the way light hits it and reflects off the curved surfaces.

A bowl truly worthy of a "Closer Look".

Alan Carter



Alan Carter

**"A Closer Look" is presented each month by the re-
viewer of the CWT gallery, celebrating originality and
fine craftsmanship**