



November, 2024

Volume 36, Issue 11

Inside this issue:

| | |
|----------------------|-------|
| Editor's Corner | 2 |
| President's Curls | 3 |
| Elections: Vote 2025 | 4 |
| October Minutes | 7 |
| Safety Report | 9 |
| Interactive Demo | 10-11 |
| Classifieds | 14 |
| Instant Gallery | 18 |
| WIT | 21 |
| The Inkwell | 19 |
| Last Cut | 22 |
| Open Shop | 23 |
| AAW News | 25 |

Chicago Woodturners Newsletter

A chapter of the American Association of Woodturners (AAW)

Making the Most of Entrepreneurship



On a beautiful weekend in October, Oak Brook Mall hosted the Oakbrook Artisan Market, with a hundred booths scattered around the outdoor mall. A few years ago there was a vendor selling pens.

In search for the vendor, hampered by a lack of a directory, I found five booths with wood products. One was all cutting boards, two others had a variety of wood crafts, but the best find was the booth by Chris Christiansen. Chris turns out to be a CWT member who lives far Northwest suburbs. He and his nephew had a great display of bowls, hollow forms and other works, displaying a high level of craftsmanship. (Having made an introduction, we hope to see Chris at a future CWT meeting!)

Cont on page 12



Another Approach to Turning Spheres

Just in time for making Christmas ornaments and decorations. Take a look at a streamlined technique to turn spheres!

Page 15

Special points of interest:

- CWT Christmas Party
- CWT Tool Library
- CWT Mentors
- AAW Clubs

CWT MEETING

Thursday Nov 14, 2024

6:30 pm to 10 pm

Hybrid Meeting!

Zoom info on back page.

A Force of Nature



Mother Nature provides us with a wonderful material for our craft. Yet Mother Nature can also be so cruel, as we

Cont on page 13



Chicago Woodturners Elections

Nov 14

Page 4



Image credit: ChatGPT

Editor's Corner | *Phil Moy*



Phil Moy

As the year closes out, there's still a lot going on.

The Oak Brook Artisan Show was really well attended by shoppers, and I saw many opportunities for members who are looking for side hustles to collaborate with each other or even other vendors at the show.

Hurricane Helene ravaged the Southeast, while we had beautiful weather in the Midwest. The woodturning community in Asheville, North Carolina was hit hard. A motion passed at the October meeting to help them out with a matching donation program. Read about it on page 13.

There are likely as many ways to turn a sphere as there are Jet 1014's. The draw of making spheres

lingers even months after Frank Pagura's demo in April. But when you develop a technique that seems to work well, you have to tell others about it. Check it out on page 15.

There's plenty of room at Open Shop, so if you don't have a lathe at home, sign up to make use of the equipment at the Chicago School of Woodworking.

Brenda is still looking for table decorations at the Christmas Party. If you haven't already, sign up for the event at the November meeting.

See you then, the new officers need your vote!

Phil

TOC Volunteers Needed!

As a member of the Chicago Woodturners you should be proud that we have a history of offering one of the best regional symposiums in the country. It's not only my opinion, we also hear that regularly from both attendees and demonstrators.

We have also been very fortunate to have had a core group of committee chairpersons who have been involved for over 10 years and were instrumental in making TOC the success it has been.

This is a rebuilding year, and we need talented and energetic members who are willing to take over many of the critical organizational roles. Detailed planning for the next symposium will remain on hold until we have a new team in place.

Contact Al Miotke at abmiotke@comcast.net or Kurt Wolff-Klammer at blhkgkurt@yahoo.com to discuss and learn more.

Thanks, Al & Kurt, TOC 2025 Co-chairs



Letters to the Editor

Comments or ideas? Even complaints! *Send them to the Editor!*
Email them to: editor@chicagowoodturners.com



As the Wood Turns is a monthly publication of the Chicago Woodturners, a Chapter of the American Association of Woodturners.

President Rich Hall-Reppen

Vice President Rich Nye

Treasurer Mike Canfield

Secretary Frank Pagura

Newsletter Editor Phil Moy

Assistant Editor: "Big Country" Strand

Contributing Editors: Clint Stevens, Andy Kuby, Al Miotke, Marie Anderson, Brenda Miotke, Frank Pagura, Paul Rosen, Leslye Winslow

Photography: Cathy Bloome

E-mail: editor@chicagowoodturners.com

Website: chicagowoodturners.com



Est. 1988

36 years of craft, art,
technology and tradition

CWT MEETING

Thursday Nov 14, 2024

6:30 pm Networking

7 pm Meeting

In person at the Arlington
Heights Senior Center and
by Zoom



Zoom.com

Meeting ID: 915 7899 5899

Passcode: 003359

November Demo



Elizabeth Weber

Exploring Colors &
Textures

President's Curls | *Rich Hall-Reppen*



October 31, 2024

President's Curls written on Halloween morning
– spooky weather!

Our November meeting is back at our regular
time and date, second Thursday of the month, or
November 14, 2024, 7 pm Arlington Heights
Senior Center.

Our Demonstrator and Gallery Reviewer for
November is Elizabeth Weber, coming to visit,
demo and teach classes from Seattle, WA.
Elizabeth has been a demonstrator at the AAW
Symposiums in Portland and Louisville. In
Louisville, she was one of the POP Showcase
exhibitors.

After demoing at our meeting on Thursday night,
she is teaching classes on Friday, Saturday and
Sunday. Those classes are all full. For more
information about Elizabeth's turning and
carving, visit her website at: [https://
icosawood.work](https://icosawood.work)

Our beginning spindle and bowl turning classes
are being held on Saturday November 2 and
November 9 at the Chicago School of
Woodworking. Check with Al or Andy if there
are any spots left. One of the many benefits of
being a member of CWT is our beginning classes
with a cost of \$60 per day that covers the
materials. Open Shop Days on the first and third
Thursday evenings and the last Sunday of the
month are also benefits of being a CWT member.

Our Holiday party is on December 19 (third
Thursday of December) at the Golf Center on
River Road in Des Plaines. While we won't have
any golf activities, the Holiday Party includes
dinner, door prizes, gift exchange and other
Holiday activities. Cost is \$20 a person. Bring
your partner. Brenda and Stan will be taking
money so sign up with them at the November
meeting or email Brenda if you can't make the
November meeting. If you can help out with the
Holiday Party, call or email Brenda.



And, it's time to
renew your CWT
membership for
2025. Brenda and
Stan will be taking
membership fees for 2025. Cost is \$30 for
a single member and \$40 for a family
membership. You can bring your check or
cash to the November meeting or mail it to
Brenda.

Former member Bob Riley, donated two
mini lathes, a dust collector and a number
of turning gouges and wood to the CWT.
Andy Kuby worked with Bob on the
donation and Andy and I picked up the
donations last Tuesday.

We plan to offer some of the donation in
our Silent Auction coming up in early 2025
as well as including some of the wood and
tools in the monthly raffle. We thank Bob
for thinking of the club and offering his
turning tools and wood to the CWT so that
our members can use them.

We are working on the details of our Silent
Auctions as a way to let our members
purchase excess tools that CWT has
accumulated over the past years.

Since it's November, don't forget to vote
by November 5 in our national and local
elections.

Per our Bylaws, CWT holds elections for
the President and Secretary at this
November meeting. Elections for the Vice
President and Treasurer will be held at the
November meeting in 2025.

Rich





Chicago Woodturners Election 2025

Chicago Woodturners, Inc.
(A Non-Profit Corporation)
By-Laws

**From the CWT
By-Laws**

I. Name

The name of this non-profit corporation shall be "Chicago Woodturners, Inc." The official acronym shall be "CWT" and hereafter referred to as the Association.

II. Purposes and Objectives

The Corporation is organized exclusively for educational purposes, and its mission is to educate woodturners and the public, in and about the art and craft of woodturning. This mission will be accomplished by encouraging and facilitating the establishment of training programs for woodturners; by disseminating information about sources of material and equipment; by exposing the art of woodturning to the public; and by serving as a center of information about woodturning for members, galleries, and other interested groups and the general public. Further, the Association is organized exclusively for educational purposes within the meaning of section 501(c) (3) of the Internal Revenue Code.

VII. Elections

The officers shall be elected for a period of two (2) calendar years with terms beginning on January 1. Nominations for upcoming vacant positions on the Board of Directors will be held in September. Selected candidates shall provide an article outlining their background and objectives for the CWT that will be published in the October issue of the newsletter. Elections shall take place at the November meeting by secret ballot or in the case where there is a single candidate for that office, by a voice vote or a show of hands.

In order to facilitate an orderly transition and to preclude a mass change of leadership, two (2) positions shall be elected every year. The President and Secretary shall be elected for a two (2) year term starting on the even years. The Vice-President and Treasurer shall be elected for a two (2) year term starting on the odd years.

An officer may succeed to that elected position for no more than three (3) consecutive two (2) year terms.

The offices of President and Secretary are up for election this fall.

President: The President shall be the principal executive officer of the club. His or her duties and responsibilities include organizing and conducting all club and Board of Directors meetings, managing and supervising all business transactions and assigning additional responsibilities or duties to other Board members as needed.

Secretary: The Secretary shall keep the minutes of the club and the Board of Directors meetings in one or more books provided for that purpose and see that these minutes and all other notices are duly published in the CWT newsletter or website. In general, the Secretary shall perform all duties incident to the office of Secretary and the President may assign such other duties as from time to time to him or her. In addition, the Secretary shall maintain the "Policies and Procedures" handbook as defined in Article XI of this document.

The By-Laws of the Chicago Woodturners are available in the Members section of the CWT website
chicagowoodturners.com



Rich Hall-Reppen for President



I'm Rich Hall-Reppen, President of the Chicago Woodturners and I'm running for re-election. Prior to becoming President, I was the Vice President of CWT for three years. As Vice President, I asked, begged and convinced a number of our members to be the monthly demonstrator at our meeting and Gallery Reviewers. I ran for President, in 2022, effective for the 2023 -2024 term when Andy Kuby retired as President.

During my term, we successfully moved our meeting location from Christian Liberty Academy to the Arlington Heights Senior Center. We went from a location that served us well for ten years. The CLA location had been difficult for some of our members to attend due to the three flights of stairs required to get to our meeting room and other air quality and scheduling issues. Our Board was able to convince Frank Magnifico and Don Felch to lead a team to find CWT a new location. Frank and Don succeeded. Our new location has no steps to access our meeting room, good air quality, good storage for our equipment between meetings and ample parking.

During the past two years, we started an Open Shop Sunday and two Open Shop Thursday Evenings so that all of our CWT members can take advantage of the CWT's nine full size lathes and other CWT equipment setup at the Chicago School of Woodworking.

We increased our Hands-On Classes to five a year. Our meeting night change to Thursday allowed the Hands-On professional demonstrator and teacher to do our Club Meeting demo. All of our members can see what the Hands-On Classes will make and have the pieces in the Instant Gallery reviewed by the Professional Demonstrator.

From the Finance side, we are in the process of moving our accounting system from an excel worksheet to Quickbooks. We expect to have that done in the next month or two. Our club is well funded and we have a reserve of approximately \$70,000. Our annual tax returns have been filed on time and are available for all of our members. Based on a referral from one of our members, Tom Hargrove, we now use a CPA who specializes in non-profit organizations. She has helped us improve our financial process and controls and makes sure we get our tax returns filed on time with the IRS and the Attorney General of Illinois.

During the Covid Pandemic, we relied on zoom to hold our meetings. We owe Andy Kuby a big thank you for his leadership during Covid for keeping our Club flourishing and growing. We have continued to use zoom to broadcast our monthly meetings for CWT members who are unable to attend our meetings and our Board meetings. We upgraded our audio-visual equipment thanks to the recommendations and help from Mike Canfield so that our meetings run better for CWT members present and those watching on zoom.

If re-elected, during the next term, our goals for the Chicago Woodturners are:

Continue our successful initiatives like Open Shop Days, more Hands On Classes, Beginning Spindle and Bowl Turning classes and other learning activities for our members and the community including our Pen Turning for the schools and Scouts. The Empty Bowls fundraisers for food banks. We thank Marie Anderson for taking the lead on the Empty Bowl events.

Improve our communications to our members building on the successful newsletter edited by Phil Moy. Phil has setup a committee to work on this objective over the next year. We thank Phil for his efforts.

Increase the number of younger members. I know it surprises all of us, but our Club members are getting older. We have recruited a few new members thanks to the Woodturning Classes at the Chicago School of Woodworking taught by Andy Kuby, Clint Stevens and Al Miotke and some referrals by the local Woodcraft and Rockler staff. Combined with our improved Communications / Marketing effort we hope to bring in more members that will be the future leaders of the CWT.

Continue to improve our Financial, Audio Visual, and other administrative functions. Tom Hargrove and I have been working on updating our Bylaws that were last updated in 2014. We will discuss the suggested updates over the next couple of months. Some of the updates are clarifications and some improve our control functions by, for example, adding a couple of additional directors. Mike Canfield and I have been working on moving our financial reporting from an excel worksheet method to Quickbooks.

Responding to requests by our members. Expansion of Open Shop Days / Evenings was a request by one of our members (Thanks to Steve Glass taking the lead). Bringing in professional demonstrators from our Hands On Classes to our monthly meetings was suggested by Vice President Rich Nye. Improving our Communications to Members and the Community is a project that Phil Moy suggested and is leading.

I've enjoyed being your President the past two years and I look forward to continuing as President if re-elected.

Rich



Chicago Woodturners Election 2025

Phil Moy | President



Background

I invested in a JET 1221 in 2020 when COVID 19 seemed determined to keep us in extended lockdown. The folks at Woodcraft pointed me towards a few woodturning clubs. I joined the Chicago Woodturners in November of 2021.

Meeting custom pen turners at the Chicago Pen Show fueled continued interest in turning pens. My first Instant Gallery submission was a

small lidded bowl for ink for a Chinese chop. I made a closed end fountain pen that led to a closed end pen demo via Zoom.

Andy Kuby said he needed someone to take over the CWT newsletter. Having done a lot of newsletters, it was as easy assignment. With no limitations on what it could contain and look like, the resulting newsletters received the “Best Chapter Newsletter” at the 2022 AAW Symposium in Chattanooga. Being the newsletter editor is the best way to meet people in the club. It’s also a great opening line to meet people and vendors at AAW, MPG, TOC and the Segmenting Symposiums.

My work experience has ranged from teaching engineering graphics at IIT to training centers, sales and marketing for a variety of computer graphics companies, digital media and 3D technology. I’ve served on a number of Boards including a few Chicago journalism groups and a Chambers of Commerce. At the Hyde Park Chamber of Commerce, I was a volunteer, operations manager, Exec Board member and served a year as the Executive Director.

A serial entrepreneur, I’ve had consulting businesses in graphic and web design, table tennis equipment and even owned a tea shop. I’ve done freelance consulting in tech support and website development.

What could CWT 2025 –2026 look like?

The committee to look at the AAW Communications Award forces us to look at how we communicate internally between members and also how we communicate externally. That would include how we present ourselves to prospective members, attendees and vendors to Turn On! Chicago and the AAW. In doing so we’ll look at how, but also what we will do as a club.

We can look at what the club has done, our mission as an AAW chapter and what we can do to make us a stronger chapter. My background provides different experiences and a wide network that I can tap into.

The term “Journey” is a bit overused, but still can be used to look at where we want to go. Of course growing the membership is important, but so is balancing the levels of experience while providing a meaningful membership experience. We should be able to leverage the rich depth of talent and expertise within the club.

It is said that the areas of importance in life include not only your health and exercise, but continuing to learn, picking up a hobby, and maintaining your social network. We should be able to build all of these areas into our club activities and membership drive. We’ll even end up with a healthier and happier group of members!

I know half of the club members, and understanding what makes you click is important. Look for intense brainstorming sessions to provide feedback and ideas that will make for an exciting new year.

My theme is “Make the pie bigger” because when the pie is bigger, there are more people, more resources, more ideas and more funding to be creative and innovative. To keep squeezing the existing members to do more has its limitations.

My wife Liz and I recently became residents of Jefferson Park, minutes away from the Chicago School of Woodworking. We’ve seen the school bring us more members through our efforts in classes held at CSW. There should be a lot more woodturners out there to join our ranks.

I hope that in the coming year I’ll be doing more turning. It will include more pens, some bowls, some segmenting, a few chess sets and things learned from past demonstrations and symposiums. Now I can add to that interact with more members at the local and national level!

I hope that all of you will be with me on this Journey and we’ll have an awesome time!

Phil

Oct Minutes | *Frank Pagura*



Tonight, we have scheduled two demonstrations.

One is by Jack Buckley, he will show us the Tormek Sharpening System. Two is Douglas Long and Bob Leonard, they will show us what's new with the Frugal Vacuum Pump System, featuring the new chucking and accessories.

The Gallery Review will be done by each maker.

AAW News AAW director elections were finalized in August. Kim Winkle and Chuck Lobaito were reelected and David Fellows, from South Carolina was elected.

AAW Symposium is set for June 12-15, 2025, in St. Paul, Minnesota. This should make it more economical for us in the Midwest, start making plans to attend.

Information on regional events for 2024 and 2025 is on the woodturner.org website.

CTW News and Events Empty bowls was held in Batavia last week. This is a combined event with CTW and Windy City Turnings. Thanks to Marie Anderson, John Dillon and volunteers \$900 was the sales income which will benefit three local charities.

CTW Holiday Party is all set for December 19, 2024, at the Golf Center in Des Plaines. Get your turned piece ready for the now famous gift exchange, don't miss out.

Annual election for President and Secretary will be held at our November meeting. In the running for President are Rich Hall-Reppen (running for a second term) and Phil Moy Read their BIOs in the September Newsletter. For Secretary Rich Piper has been nominated to replace Frank Pagura, who is retiring.

Rich mentioned that some **updates and revisions to our bylaws** are being worked on with the assistance of Tom Hargrove, and the methods of voting are an area which needs revisiting.

Silent auction for excess CWT tools will be scheduled for the near future. Inventory to be included is still being evaluated. A former member, Bob Riley, is donating to the club a substantial amount of tooling, accessories and wood. Andy and Rich are scheduled to pick things up at the end of October. Some of this inventory will make its way to the silent auction.

Open Shop Days on Sunday October 27 at Chicago School of Woodworking from 9:00 am to

To 3:00 pm. Email Andy if you plan to attend. First and third Thursday Nov. 7 and 21 are open shop evenings as well. Email Steve Glass if you want to attend.

Phil Moy, our newsletter editor had a request for someone interested in assisting with the newsletter publishing. See him after the meeting for details.

CTW Upcoming Classes.

November 2 and 9, 2024, are the dates for the CWT Beginning Turning Classes. Spindles on the 2nd and Bowls on the 9th. Al Miotke and Andy Kuby have made this; now popular class, a not to be missed event. The cost is \$60 per class.

Elizabeth Weber, an AAW demonstrator will have a three-day class on November 15-17.

TOC final report. Al Miotke gave a report on the 2024 TOC Symposium. Even though financials were not completely tabulated the auction brought in a \$17 thousand, which will ensure that the club's finances will be in good standing for a few years down the road. Al and Kurt thanked all the volunteers involved.

Even though this report indicated a successful mission, it was not lacking a negative streak.

Oct Minutes | *Frank Pagura* *Cont.*

It is obvious that events of this kind can only be tackled if club member participation is reliable. Al pointed out that the heavy load, lately, has been on a handful of people, which as can be expected are reaching the end of the line. Preparations are due to start for 2026 TOC and continued avoidance of club participation puts the future of this “EVENT” in serious jeopardy.

Woodturning news As most everyone knows the recent hurricane season has caused havoc in the southeast. Of particular interest to the woodturning community, Ashville, N. Carolina has suffered unprecedented floods causing the local Woodturners club, Carolina Mountain Woodturners, to lose practically all equipment. Andy Kuby entered a motion to have the CWT match a club member donation up to \$ 100. for a total club match up to \$ 2,000. The motion was seconded by Tom Hargrove. The membership voted yes by a show of hands. There were no negative votes.

Meeting Raffle

Very active raffle tonight, Paul reported an income of \$ 190. Paul thanked former members for item donation and RJR Wood for their donations.

Membership

Brenda announced 5 new members have joined CWT. She also recognized 3 guests attending the meeting. Read all about it in the membership report in the newsletter.

No news about Pen for Troops and Beads of Courage Boxes and bags.

Safety Report Due to a longer time required by our extensive demonstrations tonight our safety presentation “Safety at the Lathe, Brief Review” is rescheduled for the November meeting.

The **Gallery Review** tonight was a little different. Each Maker was given 1 and a ½ minute to present his piece and answer questions. It worked well, for the most part.

The **Demonstrations** followed, after a short break.

Check the reports on the demos in the newsletter.

Dutifully Submitted By **Frank Pagura**,
Secretary.

Classifieds

WANTED: Raffle Coordinator

Looking for a Raffle Coordinator to manage the raffle donations for CWT meetings. Responsibility include identifying sources of raffle items and conducting raffle drawing at meetings.

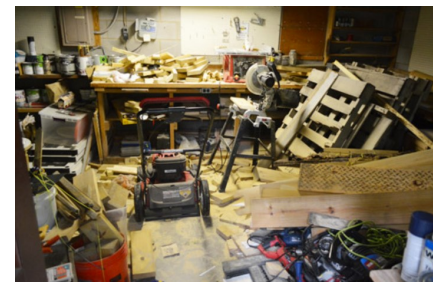
Contact Rich Nye, e-mail nyewoodturning@gmail.com

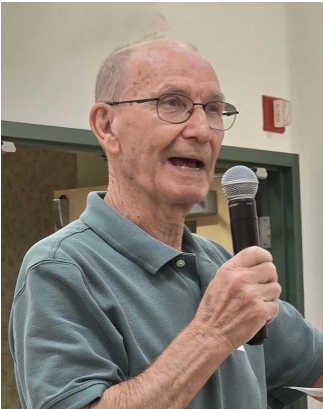


Decluttering your Shop? Got something to sell? Looking for something?

Send an email with details and pictures and we'll post it in the AWT classifieds!

E-mail to: editor@chicagowoodturners.com





Safety Report | *Frank Pagura*

How safe we are at our lathe is greatly influenced by two things.

- 1) Our willingness to learn and implement safe practices
- 2) By our mistakes, sometimes leading to a visit to the ER.

Developing, and implementing safe practices is a never-ending process, As a matter of fact, it may become more challenging as we grow older. Learning from our mistakes requires the willingness to take some time and analyze our action post factum.

This can become a beneficial experience, usually our motivation is augmented by pain, scar tissue or worse. For tonight I selected only a few basics, which can go a long way in keeping us safe at the lathe.

- 1) Make it a practice to keep the area around your lathe clear of debris and loose items which can become tripping hazards and cause one to lose balance.

Clean and pick-up regularly. A good suggestion is to do this after a project is finished, before the next comes

on board.

There are different lines of thought about having a nice “cushion” of sawdust and shavings on the floor around the lathe. I’ve been told that a nice cushion layer of shaving protects items falling, or flying off the lathe.

This does not work for me, usually I drop some important element or a set screw which waste an inordinate amount of time to find or disappears to never be found again.

I have another issue; my shop is in my basement, and it has a vinyl floor. The combination of saw dust, shavings and vinyl makes for an excellent Skating ring. Not a stable environment! I am a firm believer that a clean floor is safer and more productive.

- 2) As I get older, I also find that good lighting is not a luxury but a necessity. Good lighting makes you safer and eliminates the strain on your eyes.

- 3) Wearing adequate protection is another non-negotiable practice.

LUNGS: At minimum, you should wear an approved NIOSH dust mask when turning, especially when sanding at the lathe.

We have options including air collection systems, air filtering units, air filtered full face shields. Consider improving your lung protection unless you want to become acquainted with new medical terms like Cystic Fibrosis and chronic lung congestion!

Remember that the damages are cause by accumulation of wood dust particles one micron or less in size, not visible to the naked eye.

EYES: Safety glasses and full-face shields are strongly recommended Be aware that modern face shields are light and easy to wear, usually \$ 60. will buy you a good face shield with an approved visor lens.

If you think that this is not necessary let’s commiserate, over a cup of coffee, when you explain the visit to the ER costs and the loss of at least half a day to get you fixed up.

These are only a few significant points to consider which will improve your safety at the lathe and make you a happier turner.

Remember your safety is in your hands!

CWT Safety

Frank Pagura

Interactive Demonstration | *Paul Rosen*



Jack Buckley gave us the demo on the Tormek T8 sharpening system. Tormek is a Swedish company that developed and markets a slow-speed, water-cooled sharpening system that has been on the market, relatively unchanged, for the past 40 years.

The beauty of the Tormek system is that it can sharpen not only lathe tools, but chisels, plane blades, carving tools, scissors, and even kitchen knives. The standard 10-inch diameter x 2-inch wide sharpening stone turns in a trough of water at a very slow speed (90 rpm), so it could never cause bluing (removing the temper) of the item being sharpened. That said, the Tormek can take about 1.5 minutes to sharpen a bowl gouge that a standard bench grinder can sharpen in about 20 seconds.

If you buy a new bowl gouge and want to grind a swept-back profile to the new tool, a bench grinder would be your best friend here. But the bench grinder can cause bluing of the steel if sharpened too aggressively—less likely if the tool is made of high-speed steel.

The beauty of the Tormek is its precision. Proper use of the accessory tool-holding jigs will assure minimal steel removal with each sharpening. So your tools will probably last longer when sharpened on a Tormek, vs. a bench grinder. In addition, there is no dust associated with the water-based system and magnets are used to attract steel

The standard T8 system is exquisitely engineered. It weighs 32.6 lb., and the motor is rated for continuous duty. It can support a variety of jigs and accessories, including a conditioning stone that can change the grit of the wheel between 220 and 1000. But you pay for this precision. One online retailer sells the T8 for \$915.00. (A slightly less robust version of the Tormek is the T4.)

One accessory of particular interest to woodturners is the SVD 186 R Gouge Jig which is the Tormek analog of the Wolverine Vari-Grind jig. The Tormek Woodturners Kit includes the Gouge Jig plus rounded and V-shaped cork honing wheels.

The T8 comes with a flat leather honing wheel, to remove any tool burrs that might be left from the primary stone. The leather can be conditioned initially with a light coating of honing oil, followed by an abrasive paste that is periodically applied to the entire leather surface. Caution: always hone a newly sharpened edge with the honing wheel turning *away from* the edge to be sharpened.

Eleven different accessory tool holding jigs can be mounted on an “F-shaped” piece of 1/2-inch round steel which can be mounted either vertically or horizontally to the body of the sharpener. In the vertical position, jigs can hold chisels, plane

blades, axes, or kitchen knives with the wheel turning *towards* the edge to be sharpened. In the horizontal position, the wheel turns *away from* the surface to be sharpened. This is used for bowl and spindle gouges, as well as spindle roughing gouges.

A problem common to almost all grinders is that over time, the stone will wear and decrease in diameter. Tormek offers a diamond truing tool that can be used to re-surface the stone. Alternately, one might consider replacing the primary stone wheel with a CBN or diamond-impregnated sharpening wheel, whose diameter will remain constant over time.

Tormek has published an excellent manual that provides detailed and concise instructions on how to use available accessories. On YouTube, you will find a number of how-to videos on using the Tormek sharpening system. Speed in sharpening is not its forte, but the Tormek excels in precision, repeatability, absence of sharpening dust, and minimizing loss of steel with each sharpening. Your tools should last longer with a Tormek.

As Nick Agar once said, “Don’t shorten your tools, sharpen them” with a Tormek.

Thanks to Jack for an excellent demo on the Tormek Sharpening System!

Tormek systems are available through Woodcraft and Rockler.



Interactive Demonstration | *Phil Moy*

Vacuum Chucks and why they Work

Doug Long and Bob Leonard provided an in depth look at reverse vacuum chuck turning. The collaboration of these two provide a more secure alternative to a jam chuck for finishing the bottom of a bowl or box

Doug’s explanation on how and why vacuum chucks work was like listening to my high school physics teacher. Interesting points were brought out, like a higher amount of vacuum pressure does not make for a tighter grip, but the a larger cross section does. The different sizes of chucks that he provides offers more flexibility in turning different sizes of objects being turned.

There were a number of useful tips offered. One was keeping your centerpoint divot from your live center when turning a dovetail on a bowl so when you flip it to use the vacuum chuck, you’ll have a center point for reference.

Also vacuum chucking should not be expected to be as secure as a four jaw scroll chuck or screw chuck. Even in Colorado’s high altitude, vacuum chucks still provide enough suction to hold your piece on the lathe. He emphasized that it is not to replace a scroll chuck, although depending on your piece and what you are doing.

He’s seen some turners push the limit. It possible to overcome the suction by using too much pressure, or perhaps a dull gouge.. A light touch and a sharp gouge is the way to go. Of course, you are wearing your safety mask, just in case!

Additional vacuum chuck accessories can be obtained from Doug Long who uses his engineering background to create a “better mousetrap”. His vacuum chucks are built with aluminum hubs and a variety of flexible seals called “Angel Wings” which on to your turning even if you don’t have a perfectly round and flat edge for a vacuum.

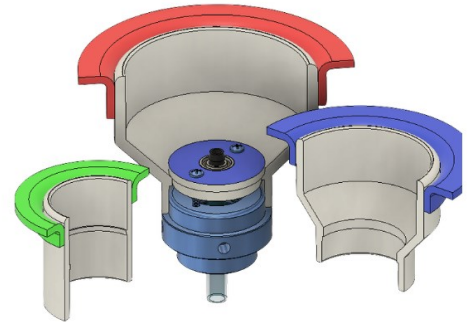
He has also produced a series of non-vacuum based chucks for holding objects while turning. Check them out on his web site, www.odd-not.com

Bob Leonard and Doug are often seen together, they were at Turn-On! Chicago with a booth and has a steady flow of customers. Bob is a long time a member of CWT. He originally refurbished vacuum pumps used in medical application to create a vacuum pump solution for woodturners.

His Frugal Vacuum pumps can be bought as a complete solution and is compatible with all of Doug’s products.

His web site is www.FrugalVacuumChuck.com

Both Doug and Bob sell direct, contact them through their respective web sites!

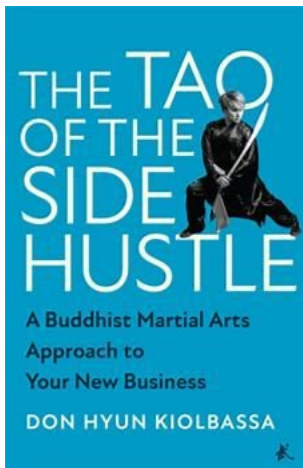


**The New Frugal
Oil-
Free Vacuum
Pump**

Read all about it at
FrugalVacuumChuck.com

**More than
just vacuum
chucks!**

Large jaws from **ODDNOT!**
odd-not.com



The Tao of the Side Hustle,
Matt Holt Books

Making the Most of Entrepreneurship

The fifth one I found by accident. I stopped to ask for directions. There was a rack of pens on the table. And there was pizza cutters and other things for the kitchen. As it turns out, JoAnn Jerzyk's booth, named Heart to Hand, sells woodwares! Not a CWT member, but a WIT prospect if I ever met one!

The Oakbrook Artisan Market management is careful not to having too many vendors selling like items. But there is opportunity to expand the presence of woodturned products.

I met a candle maker who was selling candles in plastic holders. I suggested to her that there were other possibilities for candleholders, and pointed her to the CWT website. Being a techy marketer type, she whipped out her phone and looked at what was in our Gallery. Yes, she was impressed!

We also talked about her business, was she full time or a weekend side hustle? Paris's business is a side hustle. She is doing what she really loves, not unlike many woodturners, and wants it to be an eventual exit strategy from a traditional 9 to 5.

I met Don Kiolbassa at an event. He is the author of **The Tao of the Side Hustle**. It's a book about

looking beyond a traditional job and getting ahead through a side hustle.

Donald graduated with a degree in accounting, but his true love was martial arts. Not just a fan, he was a martial arts champion. His skill caught the eye of video game manufacturers. They captured his moves using a motion capture system and his moves contributed to Mortal Kombat's fame.

Moral of the story: Your college degree shouldn't pigeon hole you into your choice of a profession. Side hustles can develop into something bigger.

Don's story can be the story of many an entrepreneur. Your skills and love of woodturning could be turned into a profitable enterprise. It just needs a little bit of strategic planning and keeping an open eye towards how you reach your market.



Tales from the Craft Show Marketplace

I first ran across the Oak Brook Artisan show almost three years ago, when they were inside the Drake Oak Brook. They've grown, a sign of good show management! They said that they try to maximize the efforts of a vendor and not duplicate wares.

As the show has grown in size, competition between competing booths is less of an issue. Without a directory it was actually hard to find the different woodworking booths, forcing you to walk through all of the booths. Maybe that was on purpose, and on a nice day not really an issue if you were just browsing without a mission.

I saw opportunities to sell more woodturned products at the show. After all, you don't have to be told "We have too many woodworkers so you can't do a booth, wait till next year."

For example, the candle maker could have turned candle holders (even multi-axis candlesticks), the plant people could have turned flower

pots, the diary and journal people could be selling custom pens, if you are selling wine do you have bottle stoppers, if you're selling jewelry what kinds of rings and pendants do you have in your booth? If you are selling peppermills and salad bowls are you a kitchenware booth or a booth?



Barbara Dill

woodworking

The list goes on and on if you look at the marketplace from a different perspective. The opportunities are out there!

Force Of Nature

Mother Nature was putting on a show in the second week of October. For us in the Midwest it was one of the nicest weeks of the year. In the Southeast, it was tornadoes, hurricanes and flooding, almost all at once, and worst yet, two weeks in a row! From North Carolina down to Florida chaos and destruction has changed life for many.

I reached out to Graeme Priddle and Melissa Engler to see how they survived the ‘once in a lifetime’ event in the hills of Asheville, North Carolina. When they were here to do the CWT demo and Hands-On Workshop, they talked about building their woodturning school in North Carolina. Asheville was hard hit by hurricane Helene.

As it turns out, they weren’t even in Asheville and a little bit apprehensive and had a hard time reaching people since cell and power was out. They did suggest reaching out to the Carolina Mountain Woodturners to see what was going on there.

Carolina Mountain Woodturners are the host for the Arrowmont retreat. There are many well known turners in Asheville, including David Ellsworth AAW member No. 1.



CMW had located their shop 6.3 feet above the highest historical flood level. Helene came through and added ten additional feet above that mark, putting the shop under four feet of water.

As they rebuild, some of the lathes have started up, but they expect that motor rebuilds will be needed for many of their machines.

Chicago Woodturners passed a motion to match donations at the October meeting.

Complete details will be discussed at the November meeting.

WIN A FREE AAW INTERNATIONAL WOODTURNING SYMPOSIUM PACKAGE

- One Free Registration
- One Hotel Room
- One Banquet Ticket
- \$350 Travel Stipend

SIGN UP TO WIN >

ARROWMONT
SCHOOL OF ARTS AND CRAFTS

HOWARD
PRODUCTS, INC.

MDI Woodcarvers
Supply

Support Woodturners Affected by Hurricane Damage

Our hearts go out to all the woodturners and craft artists whose lives have been upended by the devastation of Hurricane Helene. This disastrous storm has affected countless artists, including many in the woodturning community, whose studios and livelihoods have been disrupted. Unfortunately, Hurricane Milton also has the potential to significantly impact people in Florida and the surrounding areas.

We know how resilient our community is—but we also know that rebuilding takes time, resources, and support. That’s why we are asking you to stand with us by donating to the [Craft Emergency Relief Fund \(CERF+\)](#). Your contribution will directly help artists in need to recover from hurricane devastation.

OUR MISSION

The Craft Emergency Relief Fund (CERF+) provides craft artists with support and resources for disaster and emergency relief, education programs, and readiness grants to strengthen preparedness. Committing to generosity, inclusion, and care, we advocate for the thrive-ability of craft artists and craft as an art form.

Classifieds

Due to a move next summer I am dismantling my wood shop, which is only 2 years old. I have a lot of brand new or little used top of the line equipment.

This week I started to contact WW associations in Indiana and Chicago as well as the Marc Adams School in Indy in order to list everything for sale.

Of particular note is my Robust Tools American Beauty Long Bed Lathe and it was about every available upgrade. I am sad to say that while I was focused on building shop cabinets first, I have only toyed with it once. I overbought turning tools and have many which have of course never been used.

If your organization or members might be interested, please let me know.

I am looking for 75% of retail which is of course is over 30% savings with no tax, etc. I am happy to have folks tour my shop (dedicated 60' x 40' out-building on my acreage), or I can take photos of particular items folks might be interested in.

This is a list of the major items; but I also have a lot of tools from Festool, Woodpecker's, Blue Spruce Tools and Carter and Son.

1. 5hp Industrial Cabinet Saw - Sawstop
2. 5hp Powermatic Shaper with 1hp auto feeder
3. Powermatic Disc/Belt floor standing sander
4. Castle tabletop Pockethole maker
5. 3hp Laguna dust collector with HEPA filter
6. Rikon 17" Variable Speed Floor Drill Press
7. Laguna JX8 Jointer
8. Laguna PX16 Planer
9. Laguna LT18HD Bandsaw with 5hp (Italian made) Leeson motor
10. JET cast iron router table with Woodpecker's SPINRITE 3.25HP ROUTER MOTOR
11. Robust Tools American Beauty Long Bed Lathe
12. 2 x Baleigh AFS-1600 Air Filtration units
13. Powermatic PM2244 Drum Sander, 1-3/4HP
14. Powermatic 1791264K Model 719T 1HP 1-Phase 115/230V Tilt Table Mortiser W/ Stand

I run everything I can at 220 (Single Phase), but much of it can be wired for either 110 or 220.

Thanks,

Michael Roberts

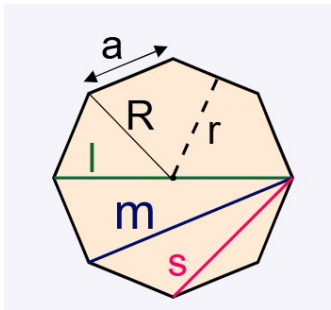
Mike Roberts <waybackin67@gmail.com>

Valparaiso, Indiana

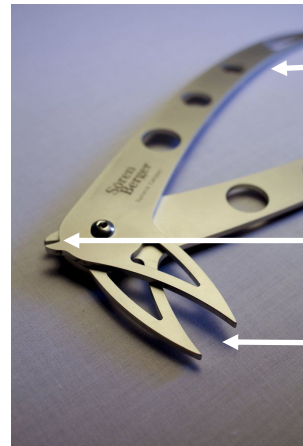
219-252-2277



Another Approach to Making Spheres | *Phil Moy*



In April, Frank Pagura did a “Turning a Sphere” demo (As the Wood Turns, May, 2024). He also showed us a pair of sphere calipers designed by Soren Berger, an Australian woodturner. Frank doesn’t use it. He got it from Dick Sing who said it was too complicated. It’s a quality tool, about \$70 if you want your own set.



Use to measure the cylinder diameter

Use for making a hexadecagon

Use to making an octagon

Soren Berge Calipers

Soren’s technique is similar to Frank’s. Create a polygon shape that approximates a sphere. Freehanding a sphere from a cube takes a good eye. A sphere with your interpretation of round is nice, but a sphere is a sphere.

Using an octagon as a reference makes it easier. But even with 8 sides, there’s room for interpretation. A 16 sided polygon (hexadecagon) works even better. Smooth over the corners and you’re done! (See the images to the right.)

The Soren calipers help create an octagon or a 16 sided polygon for any diameter of a cylinder. Before you go out and order one on the Internet let’s take a look at his approach.

The instruction manual was hard to follow, especially after seeing Frank’s demo. It turns out that there’s a core difference here.

Instead of creating the sides of the polygon, it measures what you should take away!

While trying to mentally reconcile this difference, it dawned on me that there is common ground between these two procedures. They both get you to the same place. The magic is not in the calipers - *it’s in the universal principles of geometry.*

What do you do if you don’t have a pair of Soren calipers?

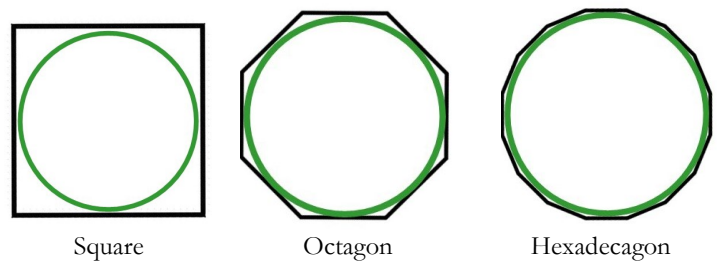
This article adapts the Soren technique without using his calipers.

When using a lathe we often measure from any direction, from the top, on the side, from the front. But the movement of tools is largely in 2D, in and out, left and right, on a plane through the centerline of the lathe and the toolrest.

Creating a 4 inch diameter sphere

You’ll need a pair of regular calipers and a scale. Digital calipers would be convenient, but not necessary. This technique uses a combination of turning specific diameters and using measurements from this table. Reference the table on the right for four critical dimensions.

Step 1: Turn a 4 inch diameter cylinder, using a block that is a little larger than 4 in. x 4 in. and about 7 inches long. A drive



Square

Octagon

Hexadecagon



| Sphere Diameter (D) in. | Octagon | Hexadecagon | | |
|-------------------------|------------------|-------------|------------------|------------|
| | Side length (A1) | Waste (W1) | Side length (A2) | Waste (W2) |
| 3.00 | 1.24 | 0.88 | 0.60 | 0.32 |
| 3.50 | 1.45 | 1.03 | 0.70 | 0.38 |
| 4.00 | 1.66 | 1.17 | 0.80 | 0.43 |
| 4.50 | 1.86 | 1.32 | 0.90 | 0.48 |
| 5.00 | 2.1 | 1.45 | 1.0 | 0.55 |

Table 1

Another Approach to Making Spheres

center and a live center works. Turn a tenon on the right side.

Step 2: Use figure A for turning, shifting the 4" portion closer to what will be near the live center. This will give you some working room near the scroll chuck. The diameter on the ends of the 4" block come from the table (A1), 1.66 inch diameter.



Picture A

Step 3: Determine what needs to be removed. Mark point A—0.83 in. (W1 from the table). Point B is the intersection of the side and the supporting cylinder. Turn to remove the corner by the red line, points A and B in Figure B. Repeat on the opposite side. **You have created the octagon enclosure for your cylinder!**

You could shape the sphere at this point, but let's continue and create a 16 sided polygon.



Picture B

Step 4: Reduce the supporting end cylinders to the 0.8 in. diameter (Table column A2). It happens to be the length of a side for a 4" hexadecagon.

Step 5 : Mark the distance W2 (4 in) in both directions from each octagon corner, C and D in Figure C. Turn to remove the material in this corner. Repeat on the other three corners. You now have a 16 sided enclosure! (Figure D)



Picture C

Step 6: Finish the sphere. Use a light touch with a sharp gouge to remove the corners. The mid-point of the side is the tangent to your sphere. **Don't go past this tangent point.**

I used a sheet of 80 grit sandpaper folded over to round off the corners. A large sheet contacts multiple corners (The no-catch method)



Picture D

It's magical to see the sphere emerge!

Picture C shows the right hand side of the sphere with sanding. I didn't need to use a jam chuck to fine tune the sphere.

I used 150, 240 and 320 grit sandpaper and then Yorkshire Grit and Hampshire Sheen were the final finishing steps. (Picture D)

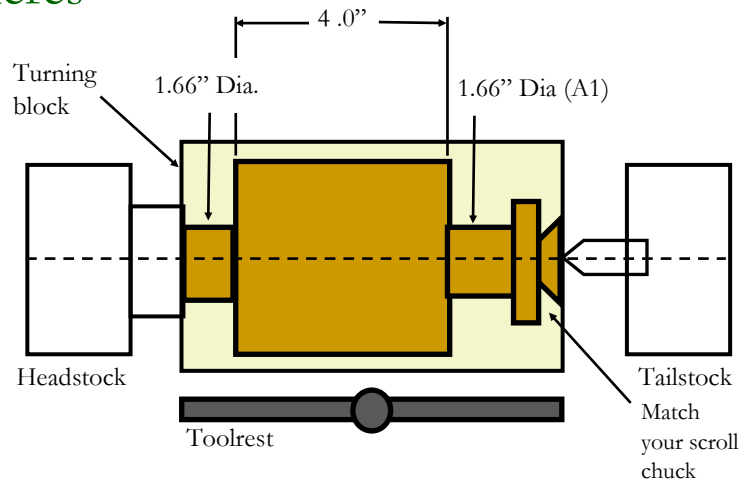


Figure A

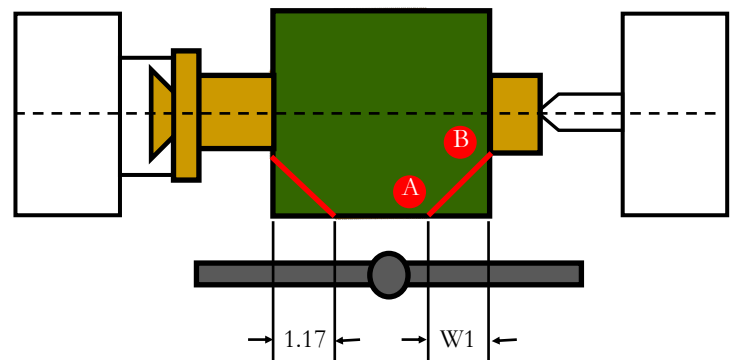


Figure B

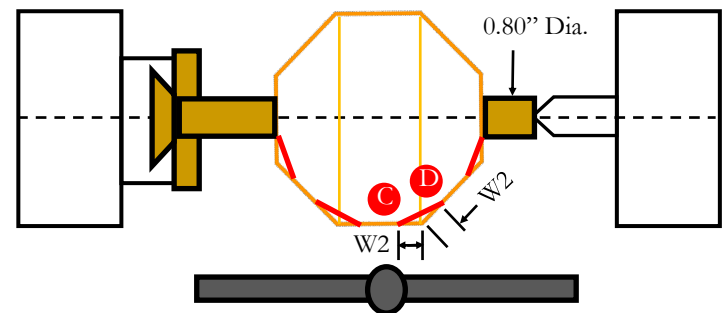


Figure C

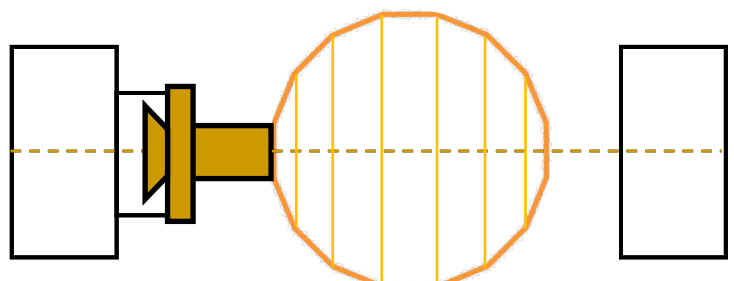


Figure D

A Postscript to Another Approach to Turning Spheres | *Phil Moy*

Since writing the article “*Another Approach to Turning Spheres*” there was more to the story to pass along. I want to offer a technique that a beginning turner can use to go from turning cylinders to spheres in short order. Turn a dozen spheres and your last one will be a work of art!

1. I was gifted a few 4x4x12 blocks of wood that begged to be made into spheres. They were so green I could feel the moisture increase as I progressed from block to cylinder to sphere. I think the only advantage to turning spheres in green wood is that the wood cuts quickly. Keeping the tools sharp was essential.

After finishing the sphere, cracks showed up a few days later as the wood dried. I think every day brought a new ripple to the shape. I'm not expecting my spheres to stay round after a few months! I suggest using kiln dried wood for turning spheres!

2. I had the opportunity to visit a ping pong ball factory in Shanghai. There was one final test to determine if a ball was perfectly round. Three buckets were at the end of a slanted table top. One bucket in the center, and one on each corner. If the ball rolled straight, it would be labeled a perfect, three star ball. If it veered off to either corner, it was demoted to a two star ball.



The test has a flaw. The balls are vacuum formed, and the circumference of the mold provides a perfect circle. The rest of the ball may not be perfectly spherical. A roll test is not a perfect way to test a ball. Table tennis pros will spin the ball on the table to look for and reject a wobbly ball. At high speeds, a wobbly ball spins erratically.

Did my sphere wobble? It rolled like a ping pong ball, perfect around the axis of the lathe, wobbly in other places. I suppose a handcrafted sphere doesn't have to be 100% perfect. I can blame it on using green wood. The sides are going to move as it dries.

3. My second try at making a sphere led to making a lidded box. The sphere can be parted easily and the lower part hollowed. (Pictures 2 & 3) There is a 1/4 inch gap in doing so. The box is re-assembled and turned for a smooth transition. If you really need to have a perfect spherical box you can add that distance into the width of the polygon.

4. Doorknobs, drawer pulls and other objects incorporating a sphere or hemisphere are easily designed. Starting with a sphere as the base shape, carving pumpkins or other organic shapes is easier since you have a secure mount on the lathe. Embellishment and finishing are also easier to do.

5. An imperfect 16 sided polygon is likely to give you a wobbly sphere. Care in measuring and turning is important. You might need to use a jam chuck and a template to fine tune your sphere. Cut a semicircle for your radius with cardboard or thin wood. Use the template to find the high spots. Don't go below the sides or you'll reduce the diameter of your sphere. Your template no longer applies. Soon you'll be turning a ping pong ball sized sphere!

6. Table 1 provided in the article can be used to calculate smaller, larger or even in-between diameters. Because everything is proportional, double the 4" values to make an 8" sphere. Divide by two to make a 2" sphere. Take the average of 4" and 4.5" to get the values to use for 4.25" sphere. In your initial turning, if you end up with a smaller diameter, remember to match the horizontal distance to the tuned diameter.

7. Want to use a 32 sided polygon? The waste cut is .2" from each corner of the hexadecagon! You only have to do this on eight corners.

Making spheres is therapeutic and sharpens your turning skills. Sphere No. 3 is in Picture 4. If you get hooked on making spheres, add a pair of Soren calipers to your toolbox!



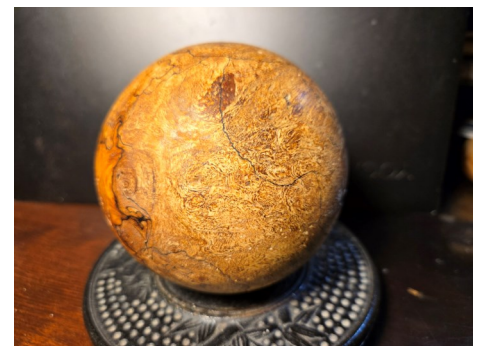
Picture 1: Sphere No. 2



Picture 2: Parted with lid



Picture 3: Matching the bottom and lid



Picture 4: Spalted cherry sphere

Instant Gallery |

Members who brought an Instant Gallery submission talked about their own piece, offering more insight into their creation.

2024 Gallery submissions can be found on the CWT website, chicagowoodturners.com



Roy Lindley



Andy Kuby



Andy Kuby



Keith Rose



Kurt Wolff-Klammer



Phil Moy



Scott Barrett



Paul Pyrcik



Paul Pyrcik



Multi-Axis Turning with Clint Stevens at CSW

Clint Stevens is synonymous with Multi-Axis Turning and his Hands-On class in October was a rare opportunity to learn from Clint, one-on-one. Taking the students from a basic multi-axis turning exercise a to an organic box was the agenda for the three day course. Students Harry Olson, Tim Hoerl and Rhea Ghosh are also new additions to the CWT membership rolls!



Harry Olson



Tim Hoerl



Clint Stevens with Rhea Ghosh



The Inkwell
Chicago Woodturners



Why do I Need to Buy this Pen? | Phil Moy

There are YouTube channels with reviewers like Hemingway Jones, Brian Goulet or David Figboot. It might be about the best starter fountain pen or perhaps a pen you should definitely have in your collection

Pens from Pelikan, Visconti, Lamy and Namiki sell at sometimes astronomical prices. How does one compete in the marketplace?

Samuel Naldi did a YouTube video called “**How to Make Your Pen an Essential Part of Your Daily Life.**” He was talking about fountain pens, but the topics could apply to the pen already in your pocket.

1. Sign documents with style
2. Jot down quick notes
3. Keep a daily Journal
4. Make lists
5. Write handwritten letters and cards
6. Carry the pen as a statement piece
7. Write and sketch ideas
8. Personalize books and documents
9. Take meeting notes
10. Build a ritual to start and end your day

For penmakers, this is a masterclass in how to sell your custom pens!

Creating a connection to your buyer is the key to selling your product, for that matter anything you have to sell. Naldi’s discussion is a collection of



Namiki Emperor

topics that should be part of your sales pitch. These are the reasons why your pen should become his or her Every Day Carry (EDC) pen. It’s the pen that will be your constant companion .

Ask questions to know your buyer. Appeal to the buyer’s sense of style, wanting to make a

statement. Then make the right pitch to close the sale.

It’s easy to buy a Lamy Studio for \$250.00 because its reputation precedes that pen. If you don’t have a reputation, then you’ll have to create a reason.

Check out Naldi’s video because he speaks so eloquently about each point. You can build a case for the purchase, whether its your pen or a \$2,000 Namiki Emperor.

It doesn't matter how much your pen costs. People buy on emotion, then justify with logic afterwards. If a person has no sense of style or carries a pen from Chase bank, say “Thanks for stopping by” and move on to the next buyer

Go to YouTube and search for Naldi’s video. Grab a pen to take notes!

Phil

CWT Basic Turning Classes at CSW

CWT's annual basic turning classes is a good opportunity for new turners or those looking for a refresher to learn proper techniques. Wood will be provided, bring your own tools or we can provide tools. Additional mentors will be on-site! Space is limited!

Spindle Turning 101

Nov 2, 2024, 9:30 am to 4:30 pm

Lathe safety

Proper wood mounting techniques

Correct use of the spindle roughing gouge, spindle gouge, and parting tool

How to properly do facing cuts, coves, and beads. The three fundamental cuts used for all types of woodturning.

Project oriented exercises will be completed to reinforce the important cuts you will learn.

Bowl Turning 101

Nov 9, 2024, 9:30 am to 4:30 pm

More on Lathe safety

Getting from a tree to a bowl blank

Mounting techniques for a bowl blank

Creating a proper tenon

Using a 4-jaw chuck

Multiple cuts using a bowl gouge and scraper to improve finish

Optional topics: Finishing and sharpening

Contact Al Miotke to sign up for the workshop abmiotke@comcast.net

Cost for the classes are \$60 each day

Hands On Workshop with Elizabeth Weber

Nov 14 & 15—17, 2024



Elizabeth returns to Chicago after demonstrating at Turn-On! Chicago 2024. We'll get a close-up look at her technique for carving, embellishment and finishing!

Elizabeth Weber was featured in the February, 2024 issue of American Woodturner!

Visit Elizabeth at icosawood.work



SOLD OUT!

Batavia Hardwoods | Correction

We missed Kersten Beer in last month's article! Here's the correction!

Batavia Mayor Jeffrey D. Shielke and the Batavia Chamber of Commerce welcome Batavia Hardwoods. Front row: Co-owners Kersten Beer, Doug Marsh, Steve Lusted and John Dillon (not present).

Batavia Hardwoods

330 McKee Street

Batavia, IL 60510

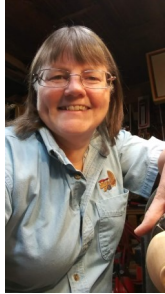
(630) 761-5907

bataviahardwoods.com

Open every Saturday from 9 a.m. until 3 p.m. and by appointment.

CWT members can receive a 10% discount for purchases (on select items.)





WIT Happenings

Hello all!

As I write this I am preparing for the 2024 WIT EXCHANGE Presentation of Projects event on November 2nd at 4pm ET. This is the culmination of 6 weeks of collaboration between 12 teams of 3 women each. These projects are well done, creative and the stories that the teams have created to explain how they went from two inspiration words to the completed projects are very entertaining.

I hope you will join me in celebrating the women and their efforts to expand their skills and their creative process this weekend! The event is free, but you do have to register to receive the zoom link to watch. You can sign up until the presentation starts. If you miss it, the event will be available to watch from the WIT archive on the AAW website about a week later.

We had our WIT Committee meeting this week and I am very proud to announce that to date, there have been 1277 wig stands turned and delivered to various locations around the country. Robin McIntyre has been keeping a running record of the deliveries being made through the WIT Liaison program. This is a total since the program has been supported by WIT in March, 2023.

It seems appropriate to announce the total as Breast Cancer Awareness month comes to an end. We are still collecting wig stands locally and our designated recipient organization is Living Well Cancer Resource Center (a division of Northwestern Medicine).

If you are interested in helping out by turning a wig stand, you can find the instructions on the WIT Calls, Projects and Grants page here: <https://www.woodturner.org/common/Uploaded%20files/WIT/Articles/Collated%20articles.pdf>

If there is interest, I can bring wig stand kits to the next meeting, just give me a call.

Lastly, I will be hosting another WIT hands on event at my home on Saturday, November 9th from 10-2pm. Please drop me an email with an RSVP so I have enough material for all to do a project!

Marie

Empty Bowls: Batavia | Marie Anderson

We had plenty of help for the day including: John Dillon, Marcie Jundanian, Rich Nye, Art Laschober, Jim Cleary, Mary Arp, Boyd Black, Derek Cadmus, and myself. The weather was the best we have ever had for this event. We had quite a few bowls turned this last month to add to the supply including bowls from: Andy Kuby, Clint Stevens, Todd Cohen, Bob Shuford, Derek Cadmus, Boyd Black, John Dillon, Marcie Jundanian, Mary Arp, George Rogers, Nate Wick, and myself as well as quite a few unsigned bowls. (If folks would sign them, we could give them a personal thank you for turning them but since they didn't I will send an umbrella thank you to all who donated, purchased, volunteered, bought or just visited the event to show their support of the event.

We also had quite a few folks who were interested in learning to turn and/or just interested in improving their skills and maybe find a community. We handed out brochures and had some great conversations. Hopefully some of these folks will show up at a meeting in the near future!

The organizations that will benefit from our efforts include these three food security organizations: Batavia Interfaith Food Pantry, Northern Illinois Food Bank, and the Fox Valley Food for Health. We will be hand delivering the checks as soon as we can coordinate with these charities.

Please remember that we have another event on December 7 from 10-2pm and this is another opportunity for you to support this worthwhile effort. I will be asking for volunteers for set up on Friday and to man the booth on Saturday. If you cannot help at the Oakton event, you can still help by turning a few more bowls and bringing them to the November meeting.



Last Cut | *Phil Moy*



Phil Moy

Thanks to “Big Country” Strand, who is not only one of our newest members, but also came up to me at the last meeting to say he was volunteering for the prestigious position of Assistant Editor!

A redesign of the newsletter is in the works, part of the Communications revamp for CWT.

Big Country is also doing Al Miotke’s class at CSW, so we look forward to what he’ll be creating in 2D and 3D!

Mark Dreyer sent out an email this week announcing that registration for MPG 2025 is now open!

The earlier you sign up, the more chances to win the Grand Prize, a JET lathe.

There are also many awesome door prizes and contests, not to mention the stellar slate of demonstrators and vendors. April 11 and 12, 2025 is the date and at the Chicgo Marriott Northwest in Hoffman Estates.

www.midwestpenturnersgathering.com to register and to



find out what is on tap for another exciting symposium!

I’m still looking for a few collaborators who would want to do a booth at the Chicago Pen Show. There will be some custom pen vendors there, but there is no one representing the CWT skills nor is anyone selling any turned accessories. A demo on turning and laser engraving pens would draw a crowd!

The show is May 1-4, 2025 at the Doubletree Hilton Oak Brook, a new location for the show.

www.chicagopenshow.com

There’s plenty of room at Open Shop, so even if you don’t have a lathe at home, sign up to make use of the equipment at the Chicago School of Woodworking.

See you at the monthly meeting, the candidates need your vote!

Phil



YouTube Review | *Phil Moy*

Richard Raffin Turns a Cross Grain Box

One of the best ways to spend a Saturday morning is to watch a Richard Raffin YouTube video with a cup of coffee freshly brewed in a French Press. (Coffee beans by Sputnik, a local roaster).

It’s a 35 minute video, and in real time, Richard creates the box and along the way you see mis-steps and corrections. Things like adjusting the toolrest without turning off the lathe, sandpaper being whipped off the lathe, the beeswax sock doing the same thing. It makes for a reality turning show.

Richard demonstrates the use of jam chucks, and in the same way I’ve seen Hans Weisflog use a jam chuck to the same thing, I am impressed that it stays in the jam chuck and doesn’t go bouncing on the shop floor.

At one point he states that he is using a one degree taper on the jam chuck, and uses a mallet to tap the piece in place.

Richard uses 180 grit, 240 grit and finally 320 grit sandpaper. I guess I can save my 400 and 600 grit sandpaper for turning pens). He finished the box with a huge chunk of beeswax using a sock. I can



raid my sock drawer to replace blue shop rags!

There’s also a few minutes where he picks up a scraper, determines that it’s not sharp enough, selects another scraper and rejects that one too. Even the use of a 1/2 in. bowl gauge, scrapers and what looked like a bedan is a lesson for tool selection to turn a box.

Search for “Richard Raffin turns a crossgrain ring box” in YouTube! And grab a cup of coffee too!

Open Shop at the Chicago School of Woodworking

As part of our partnership with the Chicago School of Woodworking, no fee Open Shop Days will continue to be available to the members of the Chicago Woodturners on **the last Sunday of the month, 9:00 am to 3:00 pm**. Open Shop Days provide our members with access to all our shared equipment and tools as well as incidental (or prearranged) mentoring. Each of the Shop Days has a facilitator/mentor on site.

The Chicago Woodturners has six JET 1642s, two JET 1224 mini's and three Powermatic 3520's in a dedicated turning area at the Chicago School of Woodworking. Turning tools are available, both from the school stock and the Chicago Woodturners lending library.

Of course, all members are free to bring whatever tools and wood blanks they choose. Two slow-speed grinders, with a variety of aluminum oxide/CBN wheels and Wolverine Jigs, are available.

To avoid overcrowding, members who intend to attend should contact Andy Kuby studio@riverwoodturner.com.



The caretakers of Open Shop at CSW

Open Shop: **Thursday, Nov 7 & Nov 21 Sunday, Nov 24**

The Chicago Woodturners have expanded the availability of member shop time at the Chicago School of Woodworking to include **evenings on the first and third Thursday of every month, 6:00 pm to 9:00 pm**. Steve Glass is the coordinator for these sessions. Please email Steve steve_glass@comcast.net to reserve a space.

Thursday evening shop time is \$5 per hour, to cover the school's insurance and maintenance costs.

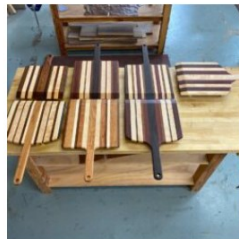
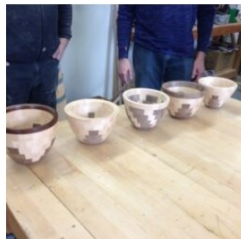


The Chicago School of Woodworking was established in 2007 to train students in the art of furniture making. Since then, our program has expanded to include the arts of turning, scroll saw, marquetry, Chip Carving, speaker making and cabinet making.

We are committed to providing students the knowledge and skills to create functional and beautiful furniture that can be enjoyed for generations.

We have chosen machinery and tools that are safe, up-to-date, and well maintained, so students can focus on learning and enjoy the varied aspects of building a quality piece of furniture or crafting wood art.

Find out more about our offerings and class schedules on our website!



CHICAGO SCHOOL OF WOODWORKING

EDUCATING THE QUALITY MINDED HOBBYIST IN THE ART OF WOODWORKING

5680 N. Northwest Hwy, Chicago, IL 60646 | Phone: 773.275.1170
chicagowoodworking.com

Woodcraft Grand Opening Nov 8 & 9!



504 Ogden Avenue,
Downers Grove 60615

**Great deals to be found
at their new store!**

Phone: 630-435-9663
woodridge-retail@gmail.com

Mon-Fri 9 am to 6 pm

Sat 9 am to 5p m

Sun 11 am to 4 pm



facebook.com/woodcraftofwoodridge

Rich, Woodcraft Sales Associate, welcomes you to explore the fully stocked aisles at the new location.

SAVE THE DATE!

Segmenting Symposium

September 26-28, 2025

Crowne Plaza Hotel

Northbrook, Illinois



Demonstrators Include:

Malcolm Tibbetts, Curt Theobald
Robin Costelle, Tom Lohman
Lloyd Johnson, Steve Bonny,
Al Miotke

Many additional demonstrators will be
announced in 2024



Segmentedwoodturners.org



Segmenting Chicago
September 26-28, 2025

- ◇ 5 classrooms doing 48 –90 minute classes over 2.5 days
- ◇ Tradeshow.
- ◇ Instant Gallery.
- ◇ People’s Choice award.
- ◇ Large classrooms.
- ◇ Saturday banquet with entertainment
- ◇ Hotel attached to the conference center.
- ◇ Raffle full of vendor provided supplies
- ◇ Discounted symposium room rate.
- ◇ Spouse/companion activities
- ◇ Pleasant suburban location close to the interstate highway.

The Segmented Woodturners are a 501 (c)(3)





AAW is a nonprofit organization dedicated to advancing the art and craft of woodturning worldwide through education.

With more than 16,000 members and over 365 local chapters globally, AAW members include amateurs, hobbyists, professionals, gallery owners, collectors, tool and equipment suppliers, and others.

Join the AAW and have access to the largest portfolio of woodturning-related material in the world!

Hone your knowledge and skills using AAW's online learning portals, exclusive print and digital publications, curated educational videos, high-quality safety resources, and more.

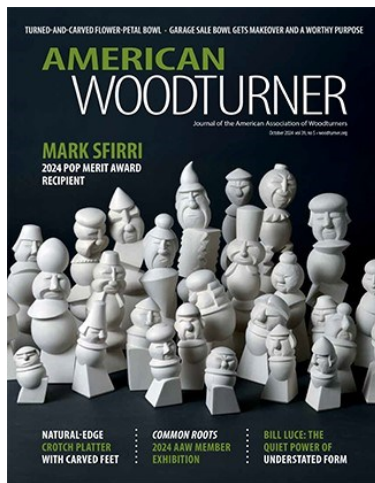
Did you Know?

AAW Explore helps you mine the wealth of information available to you on the AAW website. More perks for AAW members!

Search for Woodturning Articles and Videos on AAW Explore!

- Browse thousands of articles and videos showcasing woodturning techniques, project tutorials, artist profiles, and tips and tricks from AAW's complete archive dating back to 1986.
- Search a wide selection of curated woodturning videos that have been pre-screened for quality content and safety.
- **Most content is for AAW Members only.** To gain access, either login or [join the woodturning community and become a member.](#)

| | |
|----------------------|----------------------|
| Title or Subject | Author |
| <input type="text"/> | <input type="text"/> |
| Category | Keywords |
| <input type="text"/> | Select a Category |



October, 2024

The *American Woodturner* journal is the premier source of woodturning inspiration and instruction since 1986. AAW members have free access to the entire archive of journals when they sign in. Individual issues may be purchased in our online store.

Looking for a special article? Specific topic?

Go to www.woodturner.org Click tabs Resources, Publications, AmericanWoodturner, Index to view or download the Index

An index entry such as this: "New lathes at AAW Trade Show, 34.3:61" means the information would be found in volume 34, issue 3, page 61.

Volume to Years

- 35:1 to Present > 2020 to Present
- 25:1 to 34:6 > 2010 to 2019
- 15:1 to 24:4 > 2000 to 2009
- 4:3 to 14:4 > 1990 to 1999
- 1:1 to 4:42 > 1986 to 1989

Visit the American Association of Woodturners at woodturner.org



Start planning today!

The AAW International Symposium comes back to the Midwest in 2025!

For those who have been to a symposium, you already know how rewarding they are! If you have never been to one, it's time to make plans. It's 400 miles to St. Paul, MN, (a 6 hour ride with pit stops in Madison and La Crosse).

Call for Entries

"Open/Closed" 2025 POP Exhibition and Auction

Submission Period: December 1, 2024 to January 15, 2025.

The Professional Outreach Program (POP) is pleased to announce the theme for its 19th annual show and auction: Open/Closed, an exhibition of boxes. Each year, these shows have featured an exciting mix of excellent work created by a roster of national and international established and emerging artists. POP themes are chosen to provide a dynamic springboard for creative ideas and a showcase for extraordinary small-scale work. Psychology has shown that limits spur creative thinking, and the format of the box and limitation in size (6"x 6"x 6", or 15cm x 15cm x 15cm) provide creative constraints that we hope will spark your imagination and ingenuity.

Woodturning has long been associated with vessels and containers, and this theme offers so much to explore: themes of privacy, enclosure, preciousness, practicality, history, the polarity of open and closed, the secret and the secret revealed.

Entry fee is \$25 for up to three pieces.

"Beginnings" 2025 AAW Member Exhibition

Submission Period: January 1, 2025 to March 15, 2025

The theme for the 2025 AAW member show is "Beginnings". Each year, our goal is to host a Symposium exhibition that showcases and celebrates the full scope of excellent work being created by our members, from skillfully-crafted traditional turnings to innovative sculptures that push the boundaries.

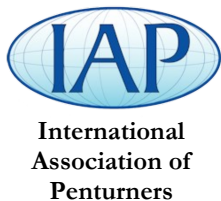
This year's theme also reflects our Symposium host state of Minnesota, home to the headwaters of the Mississippi River. As always, artists are encouraged to interpret the theme for themselves. When you think of a beginning, what comes to mind? Do you already have a piece that reflects the theme perfectly? If it was made between March of 2023 and March of 2025 it is eligible!

Entry fee is \$25 for up to three pieces.

For more information, visit woodturner.org Search for Event/Call for Entries

AAW Chapters in Illinois

| Club | Location | Website |
|---|-----------------------|----------------------------------|
| Central Illinois Woodturners | Normal, IL | centralillinoiswoodturners.com |
| Chicago Woodturners | Arlington Heights, IL | chicagowoodturners.com |
| Flatland Woodturners | Champaign, IL | flatlandwoodturners.com |
| Lincoln Land Woodturners | Springfield, IL | llwonline.com |
| Northern Illinois Woodturners | Rockford, IL | northernillinoiswoodturners.com |
| Quad Cities Woodturners | Rock Island, IL | qcwoodturners.com |
| South Suburban Chiselers Illiana Woodturners | South Holland, IL | illianawoodturners.wordpress.com |
| Windy City Woodturners | Naperville, IL | windycitywoodturners.weebly.com |



The Chicagoland Chapter of the IAP meets every third Saturday of even months, from 10 am to 1pm. Join us and learn more about making custom pens and meet some of the best penmakers in Chicago!

EST 1928
WOODCRAFT®
504 Ogden Avenue, Downers Grove, IL 60615

Chicago Woodturners Tool Library

Rich Piper (richpiper@aiaofillinois.com 773-350-5617) is the Chicago Woodturner's tool librarian. The tool collection is at the Chicago School of Woodworking.

These tools will be available during Open Shop Days for members to use. The tools are also available for checkout so you can try them out at home before investing in one of your own. A checkout system is currently being developed.

The listing of the library will be online at chicagowoodturners.com

Over the past twenty years the club has accumulated many interesting tools for members to use on a special project or just to try before investing.

One of the many benefits of CWT membership!

Vendor Guide

| Company | Website |
|-------------------------------------|---|
| Advanced Lathe Tools | https://advancelathetools.com |
| American Association of Woodturners | https://woodturner.org |
| Branches to Bowls | https://branchestobowls.com |
| Coers Custom Woodworking | coers@ameritech.net |
| Odd Knot | https://odd-knot.com |
| Peke Safety | https://pekesafety.com |
| Pete Marken Custom Woodturning | https://petemarkenwoodturning.com |
| Robust Tools | https://turnrobust.com |
| Davis/Nye RJR Woods | https://bataviahardwoods.com |
| The Walnut Log | https://walnutlog.com |
| Trent Bosch | https://trentboschtools.com |

CWT Mentors

Want to speed up the journey?

Let a CWT Mentor help you. Leverage the wealth of woodturning knowledge at CWT!

Levels B—Beginner I—Intermediate A—Advanced

| Name | Town | Levels | Areas |
|------------------|-------------------|---------|--|
| Tom Albrecht | Evanston | B, I, A | General Turning |
| Marie Anderson | Itasca | B, I, A | General turning, brainstorm with anyone |
| Dave Bertaud | Libertyville | B, I | General turning |
| John Dillon | Elburn | B, I, A | General turning, except pens and segmenting |
| Tom Eovaldi | Evanston | B, I, A | General turning, natural edge, thin wall, hollowing and carving |
| Reto Gallati | Chicago | B | General turning |
| Rich Hall-Reppen | Geneva | B, I | General turning |
| Andy Kuby | Riverwoods | B, I, A | General turning, spindles, bowls, platters, pens, multi-axis, ornaments, finials and other topics |
| Al Miotke | Mt. Prospect | B, I, A | General turning, segmenting |
| Phil Moy | Chicago | B | General turning, pens |
| Rich Nye | Batavia | B, I, A | General turning, carving, texturing, painting, burning |
| Frank Pagura | Elk Grove Village | B, I, A | General turning |
| Paul Pycik | Lisle | B, I, A | General Woodturning, Overview of Lathes, Tools, Accessories, Shop Set-up, Turning Acrylics and Alternative Materials |

It is even more fun when you bring a friend!

Reasons to join Chicago Woodturners

- Monthly meetings & newsletter
- Access to club member expertise and mentors
- Classes and hands-on sessions with name turners
- In-person demonstrations, product discounts, raffles
- and generally a good group to hang out with!....

Membership Fees

\$30 Individual membership
\$40 Family membership.
\$10 Under age of 25

Yearly membership fees for Chicago Woodturners are due at the beginning of the year. You can join at any time of the year!

Pay with cash or a check at the monthly meeting. (Make checks payable to 'Chicago Woodturners')

Application forms are found online! Contact Brenda Miotke for more information. By email: bkmiotke@comcast.net

Or by snail mail

Chicago Woodturners
c/o Brenda Miotke
920 North Sumac Lane
Mount Prospect, IL 60056



*Join the movers
and shakers of
woodturning in
Chicago!*



Est. 1988

36 years of craft, art, technology and tradition

**Join us for our monthly meetings,
everyone is welcome!**

Arlington Heights Senior Center
1801 W. Central Road,
Arlington Heights, IL 60005

6:30 pm Networking
7:00 pm to 10:00 pm

Can't come in person? Zoom!

www.zoom.com
Meeting ID: 915 7899 5899
Passcode: 003359



CWT Meeting Calendar*

2024—2025

| | | |
|--------|---------------|---------|
| Oct 17 | Nov 14 | Dec 19* |
| Jan 9 | May 8 | Sept 11 |
| Feb 13 | Jun 12* | Oct 9 |
| Mar 13 | Jul 10 | Nov 13 |
| Apr 10 | Aug 14 | Dec 11* |



Photo credit: ChatGPT

Our Christmas Party will be held on December 19th at The Golf Center in Des Plaines.

Contribute a small Christmas tree, ornament or small wooden present for the table decoration/exchange as well

as participating in the gift exchange. Bring them to the club meetings, mail them to me, or drop them off at my house.

If you plan to attend the festivities, please send a check, \$20 per person, to me at 920 Sumac Lane, Mt. Prospect, IL 60056 or bring it to the club meeting. If you've attended before you know how great the food is and how much fun we'll have. I hope you will all join us for a fun night!

Brenda bkmiotke@comcast.net

Calendar of Events

| | | | |
|---------------|---|---------------------------------|-----------------------|
| Nov 2 | Spindle Turning 101 w/ Andy Kuby | Chicago School of Woodworking | Chicago, IL |
| Nov 7, 21, 24 | CWT Open Shop | Chicago School of Woodworking | Chicago, IL |
| Nov 9 | WIT Gathering | Anderson residence | Itasca, IL |
| Nov 9 | Bowl Turning 101 w/ Al Miotke | Chicago School of Woodworking | Chicago, IL |
| Nov 14 | CWT Meeting Demo by Elizabeth Weber Elections | Arlington Heights Senior Center | Arlington Heights, IL |
| Nov 15-17 | Hands On Workshop with Elizabeth Weber | Chicago School of Woodworking | Chicago, IL |
| Dec 7 | Empty Bowls | Oakton Community College | Des Plaines, IL |
| Dec 19 | CWT Christmas Party | The Golf Center | Des Plaines, IL |

Visit the Chicago Woodturners at
chicagowoodturners.com

