



As the Wood Turns

February, 2025

Volume 37, Issue 2

Chicago Woodturners Newsletter

A chapter of the American Association of Woodturners (AAW)

Inside this issue:

Editor's Corner	2
President's Curls	3
January Minutes	4
Interactive Demo	6-7
Instant Gallery	8-9
The Inkwell	10
Product Review	13
WIT	14
Last Cut	17
Classifieds	18
Save the Date	20
Hands On Workshops	21
AAW News	23

Special points of interest:

- Pool Cue Challenge
- Open Shop Days
- TOC 2026
- CWT Tool Library
- CWT Mentors
- AAW Clubs

Kicking off the New Year for CWT!

A harbinger for 2025, January started with our largest turnout since moving CWT to the Arlington Heights Senior Center!

About 60 people turned out, members, new members and guests in-person, with others attending via Zoom.

Membership reports that January was a banner month for membership, with 9 new members and 2 returning members, bringing us over the 150 mark!

Open Shop has been active with four new turners last Thursday, eight turners in all! A variety of turning projects, with several focusing on wig stands for the Wig Stand Challenge. In addition to Marie's unofficial tutelage throughout, she also brought a vacuum chuck to practice on. Steve encourages you to come down for a lively 3 hours of learning, turning and camaraderie. DJ Steve also takes musical requests!

With vibrant monthly meetings, Hands-On workshops, Focus on the Arts, MPG, the Segmenting Symposium and more to come, we foresee an exciting 2025 for the Chicago Woodturners!



Call for Volunteers!



Focus on the Arts is a biennial, world-class arts festival held at Highland Park High School (HPHS) in the Chicago suburb of Highland Park, IL. Over the course of two days and three nights, Focus presents more than 300 workshops, masterclasses, and performances for the students and three community events featuring music, theater, art, and dance. Hundreds of professional artists grace the stages at Focus, providing an unprecedented opportunity for the students and community members of Highland Park, Highwood, and Fort Sheridan.

Club Members:

I would like to get a minimum of ten volunteers as turning mentors for each day. We hope to do 15 students per session, six sessions each day.

Also need volunteers to help students put pens together and showcase our selection of finished to students when they are not turning.

You are rewarded with an incredible lunch layout provided by the school as well as giving back to our future leaders!

Contact Brenda Miotke (bkmiotke@comcast.net) if you are available Wednesday, April 2 and/or Thursday, April 3

CWT Monthly Meeting

Thursday Feb 13, 2025

6:00 pm Networking
7:00 Meeting Kickoff

Editor's Corner | *Phil Moy*



Phil Moy

As I write this column, the Weather Channel says it's 1 degree outside, the "Feel like" temperature is -16 degrees. I have a basement shop setup now, and even in the basement, it's cooler than usual.

It's worth noting that aerosols work better at 70 degrees. Less than 70, you're likely to get a crackle finish. Even CA bonds better at temperatures over 70 degrees.

Speaking of CA, my bottle was almost empty. At the store, all the Stickfast bottles look the same, but they aren't. We take a deeper look at Stickfast on Page 13.

I planned on a one page article about errors to look for that could occur while making pens. It turned out I needed more than one page. The hands on experience is indispensable, but some heads up would have saved time and money (Should have joined CWT sooner!) I hope to pass on some of the things to others who just got into turning. Page 10.

Of course there's more than one way to skin a cat. The different forums online, like the AAW Forum, the International PenMaker's Forum, the Segmenting Forum and a host of others online help you understand what many others have gone through. We do have a host of mentors here at CWT for that personal interchange!

Do remember that just because it's on the Internet doesn't make it true, that it's a safe way or the best way to do something, I guess that applies to



"Baby, it's cold outside!"

everything you read!

The woodturning communities, like CWT, the Windy City Turners, MPG, AAW, the different symposiums offer an in-person way of sharing knowledge. Networking is still a great way to learn a lot and make new friends at the same time.

The Instant Gallery for January's meeting (Page 8) is exceptionally beautiful this month, keep up the great work and keep them coming!

I'm looking forward to 2025 and all of the great things to come!

Phil

Letters to the Editor

Comments or ideas? Even complaints! *Send them to the Editor!*
Email them to: editor@chicagowoodturners.com



As the Wood Turns is a monthly publication of the Chicago Woodturners, a Chapter of the American Association of Woodturners.

President Rich Hall-Reppen

Vice President Rich Nye

Treasurer Rich Piper

Secretary TBD

Newsletter Editor Phil Moy

Assistant Editor: "Big Country" Strand

Contributing Editors: Clint Stevens, Andy Kuby, Al Miotke, Marie Anderson, Brenda Miotke, Frank Pagura, Paul Rosen, Leslye Winslow

Photography: Cathy Bloome, Al Miotke

E-mail: editor@chicagowoodturners.com

Website: chicagowoodturners.com



Est. 1988

37 years of craft, art,
technology and tradition

CWT MEETING

Thursday Feb 13, 2025

6:30 pm Networking

7 pm Meeting

In person at the Arlington
Heights Senior Center and
by Zoom



ZOOM.com

Meeting ID: 915 7899 5899

Passcode: 003359

February Demo

Frank Pagura

Safety

Tom Hargrove

Insurance

President's Curls | *Rich Hall-Reppen*



We thank everybody for paying your 2025 Dues on time. Brenda will give us an update at our February meeting of our paid members. We had 11 new members sign up in January at the meeting or mailing in a check.

David Warren and I mailed in 380 pens we collected in 2024 for the Pens for Troops program. It took two boxes to mail them to the Sargent Joe Kelly Pen Foundation that coordinates the distribution of pens to our troops around the world. 200 of the pens came from the Midwest Pen Gathering and 180 were made by CWT members. Let's see if we can make more pens this year for our Troops.

Al, Andy and Frank cut out staves for Beads of Courage boxes in January and then glued them up during the Open Shop Sunday session. I heard they ran out of clamps. Can you imagine a woodworker running out of clamps at a woodworking school? Thanks to everybody who helped. We need more Beads of Courage boxes, so if you couldn't help Al can show you where you can find the instructions and some helpful construction points.

We are continuing our Silent Auction to let our members help us clean out the CWT closets of items we are not using but are useful to our members. In February we have a Fisch mini lathe that we are retiring, plus some more gouges and wood. We have a couple of other pieces of equipment we may also bring in depending on if they fit into my truck. Our January Silent Auction brought in \$585. Thank you to everybody who bid on the items.

We had a record raffle in January bringing in \$300. We thank everybody who bought raffle tickets. We have some great raffle items for February, too.

We are still looking for a couple of members to help the club. As many of you know, Frank tried to retire from the Secretary position after many years of service. If anybody is interested in letting Frank retire, let Frank or I know. Frank can explain what is required for the position.

As was announced at the last meeting Rich Nye would like to give up the Raffle Chairman job to



another person. We have plenty of wood and rough outs for the Raffle that has been donated by members and former members. We need someone to coordinate the Raffle each month. It's a great way to meet all of the members every month if you don't know everybody.

Rich Nye has booked Matt Monaco in March, Pat Carroll in May and Donna Zils Banfield in September for our meeting demo's and hands on classes. Brenda has the sign-up sheets for the classes which are \$400 for all three days and \$150 a day if you only can attend one or two days. All classes are held at the Chicago School of Woodworking where our club has 9 full size lathes. Rich is working on a couple more folks to fill out the 2025 schedule.

Rich Piper and I will present our 2025 Budget and a recap of 2024 at our February meeting. We intend to distribute a handout since the numbers are hard to read on the TV monitors.

Rich





Est. 1988

37 years of craft, art,
technology and tradition

January Minutes | *Frank Pagura*

Our demonstrator tonight is **Jeff Hart**. Jeff will show us how he makes his beautiful **Orbs** with Australian Burl and resin casting.

Rich Nye is our **Gallery Reviewer**.

Rich Hall-Reppen pointed out that the two tables set up at the entrance are full of items that are in the **Silent Auction** for tonight, take a look and enter your bids. The bidding time will be over at 9:00

AAW news The club group discount registration code was mailed out to all members. Use this code (**AAW25GROUP**) when registering for the 2025 Symposium in Minneapolis, St. Paul on June 11-15, 2025. CWT/AAW members only

Regional news

Mark Dreyer reminded everyone that the Midwest Pen Gathering is going to take place again at the Marriott in Hoffman Estates in Illinois. The date is April 11-12, 2025

Outreach

Focus on the Arts, Highland Park HS Pen Turning Sessions April 2-3, 2025 The team is being assembled. Brenda needs your commitment and confirmations so she can fill the roster of demonstrators for this two day event.

Beads of Courage Boxes

Al Miotke and Andy Kuby announced that they are preparing glued-up blanks to make beads of courage boxes on Sunday January 26, 2025, at the Chicago School of Woodworking during open shop time. The boxes are ready to put on a lathe, turned and finished. This will replenish the inventory of completed boxes, which Andy anticipates needing by February.

Women in Turning (WIT)

Marie Anderson reminded everyone that the ladies have a Session to make Wig Stands schedule for Saturday 11, 2025 at the Chicago School of Woodworking from 10: 00 AM to 2:00 PM

Pen For Troops

Dave is waiting to ship out about 300 pens and will receive back pen kits, he should have this accomplished by the February meeting.

Dave thanked Sol Anfuso for the batch of completed pens he just brought in tonight.

Member News

Rich Piper has been voted in as the new **Treasurer**, he replaces Mike Canfield who has resigned due to his battle with health issues.

Rich Hall-Reppen has been voted in for a second term as **President**.

Frank Pagura, is retiring as **Secretary**, no replacement for him has been found yet. The search is ongoing.

Raffle

The Raffle brought in a record high, over \$ 300 in ticket sales tonight.

Rich Nye has requested that a replacement for his on hand monthly meeting Auction should be found. Rich has been doing the Auction for over 10 years and even though he will continue to bring the auction items, he would like to turn the running of the auction to someone else.

Paul Pycik, who has been helping out by running the auction, and Rich will work on establishing a solution that will allow Rich to be released of his involvement at the next meeting so he can enjoy and participate in the meeting more fully.

Newsletter

Phil Moy reports that the Newsletter for September 2024 will be entered for the **2025 AAW Communications award**. He will go ahead and follow through with the entry form.



January Minutes | *Frank Pagura cont.*

Membership

Brenda reported 53 members are present at tonight meeting and there are 5 members attending via Zoom

Also 3 new members have signed up this month. Check out details on the membership report in the newsletter.

Be aware that dues are due for 2025, it would be nice to have all the member dues in by February!

Safety Presentation.

Frank reported that he would welcome some member input regarding what the safety presentations have covered during the last several years, as well what was not, and should have been covered.

Suggestions and ideas are welcome. Special emphasis has been given to wood dust, breathing protection and collection. This will continue to be a top subject since the long term harm can be insidious and severe.

Frank announced that the February Safety presentation will bring in some heavy guns.

Tom Hargrove will be part of the safety presentations which will deal with Fire Danger and the lesser known Spontaneous Combustion which can happen in our wood shop.

Tom will also expand in the field of insurance coverage and related subjects.

Demo and Gallery Review followed. Check the February newsletter for details.

Dutifully submitted by **Frank Pagura, (acting) Secretary**



Interactive Demo | *Clint Stevens*

Jeff Hart: The Art of the Orb



Jeff Hart

Chicago Woodturners had a riveting demonstration in January. Before Jeff's demonstration, his resin and wood orbs were on display. Jeff's hybrid orbs portray an intense view of a mountainscape trapped in a crystal ball. It's easy to see why mystical orbs have a mystical quality for people for hundreds of years.

If you have not seen Jeff's work and demonstration, his recent demonstration for Windy City Woodturners is also on YouTube. His inspiration for these resin spheres is another YouTube video by Heath Knuckles who also demonstrates the construction of a "Hybrid Sphere."



The wood used in Jeff's orbs are Australian burls, which are denser and harder than North American burls, stabilization is not necessary. These burls are from Australian Burl

(australianburls.com) in Virginia. Jeff can usually make about five orbs from a carefully selected burl which may cost around \$120.



Jeff uses the Alumilite Clear Slow resin. This is a binary resin, you must mix parts A and part B precisely. It's not cheap. A 16 lb. kit costs almost \$200.

In order to estimate the amount of Alumilite to use, Jeff uses the "rice volume" method, he fills the mold to the top with rice. By measuring the volume of rice used, he can calculate the amount of Alumilite needed for that run.

The combined resin should be mixed very well. Note that the open time is about 12 minutes. Add dye to tint the resin. Alumilite dye is very concentrated, needing only a "pinhead" sized drop.



Casting molds are available at Lizard Casting Blanks, Oregon (lizardblanks.com). Lizard reusable casting molds are held together by wingnuts. Jeff uses four inch and five-inch cube molds. With a five-inch mold, Jeff can make five to seven orbs from a 16 lb Alumilite kit. A 4-inch mold can yield seven to eight orbs. Jeff sells the five inch orbs for \$195 and the four inch orbs for \$155, the cost of materials is easily recovered.



Jeff prepares the cubic molds by placing tape in the bottom of the mold. The mold is sprayed with mold release. The cut burl is hot glued to the bottom of the mold, preventing the burl from floating to the top. The cube is placed into a pressure pot for a few hours at 55 psi to force bubbles out of the resin. After it is done, a bandsaw is used to remove about 1/16th of an inch from the bottom to expose the raw wood.

Interactive Demo | *Clint Stevens (cont.)*



Find the center on the bottom and mark it with a center punch. Draw a circle on the bottom to determine how much of the cube can be removed with a bandsaw. This greatly reduces the time and effort required to turn the resin blank into a cylinder. It's also easier on your tools and your body.



Glue a glue block onto the wood with J-B Weld five minute epoxy so that it can be mounted onto a scroll chuck. Jeff drills a hole through his glue block so that he can align it with a thin awl placed through the glue block onto the center point of the blank bottom. The live center is engaged with a small wood insert to protect the top of the resin from the live center point.



Turning resin is messy! Jeff uses a combination of traditional tools and carbide tools from Easy Wood Tools. The negative rake on the carbide tool greatly reduces the chances of a catch. Turn on the centerline of the lathe spindle with a flat tool presentation. Rough out the blank into a cylinder.

Jeff always wears protective breathing equipment and dust collection in the shop.

Since the lower section of the orb is largely wood it is turned with a very sharp bowl gouge. Jeff's orbs are purposely not perfectly round. He turns the orbs "roundish" by eye. The bottom of the orb is flat so that it doesn't roll. The top of the orb, being largely resin, is shaped with the Easy Wood carbide tool.

Voids between the burl and resin are expected but can be filled with thin cyanoacrylate glue (CA). Larger voids can be filled with medium CA. The finishing cuts are made with very light cuts using the Easy Wood tool.

Jeff uses Abranet sanding discs at 180, 240, 320 and 400 grits. Abranet offers grits as high as 1000. Abranet sanding disks are easily to clean and therefore reusable. Final sanding is done with the wet method using grits up to 3000. The final finish is done with microfine Yorkshire Grit. The last step is to reverse the orb and hold it with a vacuum chuck to cut off the remains of the glue block and finish the bottom of the orb.

If you are fascinated with crystal balls and need to augment your palm reading business, consider making one with resin and burl. I can see great things in your future. Many thanks, Jeff. You are always welcome here.



Instant Gallery | *Rich Nye*

Rich Nye conducted this month's Instant Gallery with his unique insight. A large number of turnings were submitted this month, reflecting the wide range of skills of the club membership. Collaboration was the key to a number of turnings.

As always, previous Instant Galleries are available to review on the website

chicagowoodturners.com

Photos by Al Miotke



Roberto Ferrer



Mark Jundanian and Roberto Ferrer



Amanda Thomas



Dawn Hernon-Charles and Mike Kehs



Paul Pyrcik



Derek Cadmus and Marie Anderson



Pat Cogdal



Frank Pagura



Roy Lindley



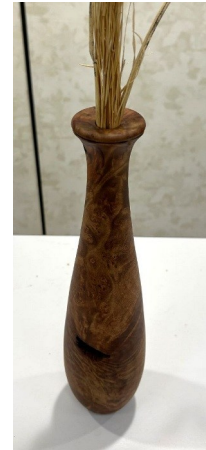
Clint Stevens



Bob Barbieri



Bob Gordon



John Dillion



Rich Nye



Cathy Bloome



Phil Moy



Al Miotke



Rich Nye



David Bertaud and Andy Kuby



Marie Anderson



Rich Nye



Kurt Wolff Klammer



They're not mistakes, it's R&D

I've lost count of how many pens and objects that I've made from kits. I have a drawer full of kits still waiting to be brought to life. Maybe we shouldn't be calling them kits anymore, but they are a great way to dive into the world of turning.

As I reorganize my shop, I came across a small box of rejects and failures. Just as I was about to toss them, I realized that they were a history of lessons learned.

Thomas A. Edison said, when he invented the lightbulb, "I have not failed. I've just found 1,000 ways that won't work."

Well, at least I didn't find a thousand rejects in the box, There's a fine line between failure and research & development (R&D), so I have an extensive history of R&D.

What can one pass along by analyzing these rejects?

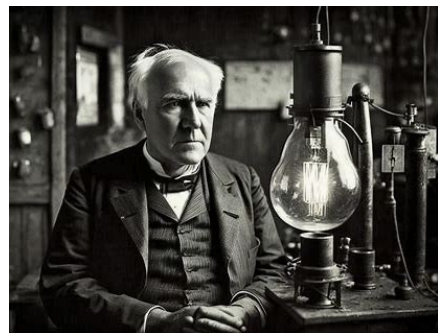
Working with kits demand a certain level of precision, or components won't fit, parts will be too loose, too tight, or they don't mate properly. Whether it's a pen or a peppermill the same care is needed,

In a perfect world, a blank would be a perfect rectangular solid, all sides equal and perpendicular. Your equipment would be perfectly adjusted and aligned. Your cuts will be square and the holes you drill are exactly the diameter you expect.

Commercially bought blanks tend to be well cut. Acrylic blanks tend to be more perfect than wood. Wood blanks can change shape over time, they warp, they twist, they shrink. You might cut your own blanks from a bigger chunk of wood, and not create perfect blanks.

I started out with a JET 1220, a cigar pen kit, a WoodRiver pen drilling vise, and a set of end mills/barrel trimmers. I already had an electric rill, 8" mitre saw and a disc sander. A Jorgensen clamp served as my vise.

Within a week, I was at Harbor Freight to find an affordable benchtop drill press. A week later, I bought a Nova Chuck with pen jaws, a Jacobs chuck and a set of brad point drills. And ordered a set of center point drills



Thomas A. Edison

"I have not failed. I've just found 10,000 ways that won't work."

Thomas A. Edison



Pix 1



Pix 2



Pix 3



Pix 4



Pix 5



Pix 6



Pix 7



Pix 8



The Inkwell
Chicago Woodturners

from Amazon.

Pitfalls, fixes and tips

Pitfall: Sides of the blank are not parallel. the end cut is perpendicular to only one side.

Inconsistencies have a way of compounding as you proceed..

Pix 1: A perfectly centered and drilled entry point

Pix 2: Exit hole, not centered and blown out

Fix: The Harbor Freight drill press table needs to be locked in, not just raised or lowered to a certain level. It's not perpendicular to the drill bit unless locked in.

Pix 3: Check that your mitre saw is set at 90 degrees. Pix 4: Not quite 90 degrees (look really close)

Pitfall: Drilling and gluing a brass tube has many ways to go wrong.

For the length of the blank, I would measure an 1/8 inch to both ends of the blank, But when inserting the tube into the blank, I would only push it in just past flush.

Pix 5: The exit end ended up with an extra 1/4 in. It's too much wood for an end mill to handle. An aggressive end mill will tear up the end. So I would use the mitre saw to cut close to the brass tube and finish it on a disc sander. Pix 6: A good end mill depth and end result. A light touch takes the blank down to the tube. The hole diameter matches the brass tube perfectly.

Pix 7: I used a disc sander to finish instead of an end mill. Using the mitre gauge, it's possible to be perpendicular to a side, but not necessarily perpendicular to the brass tube. Parts don't mate seamlessly.

An end mill ensures that the end of the blank will be perpendicular to the tube. A good end mill job ensures that the mandrel will hold the wood and the tube securely.

They're not mistakes, it's R&D (cont.)



Center point drill set



Pix 9



Pix 10



Pix 11



Pix 12

Pix 8: I am still not sure how I did this, but the turned barrel was not concentric with the tube. Of course it didn't fit well with the other parts.

Pitfall: The entry end of the drilled hole is larger than the exit, and result is that the tube wobbles a bit in the hole.

You can tell when testing the brass tube in the drilled hole that you will have a good bond.

Twist drills can move around your desired center point, especially with acrylics. Using brad point drills provides you with more accuracy. A center point drill (left) creates a better starting point, locking in the point on your brad drill. \$10.00 for a set or 4 on Amazon, since they are hard to find locally.

There is enough play between the tailstock and the headstock that a drill that moves around creates a slightly larger hole upon entry than exit.

This also happens when drilling a long blank, when you need several passes to get to the end of the blank. Successive passes may not re-enter the hole exactly, making the hole bigger with each pass.

Fix: Back off the drill and turn off the lathe to brush the drill bit off. Re-insert the drill, slide the tailstock over and then turn it on. As you reach the end of the hole, use less pressure.

I glue the brass tube closer to the exit end of the blank.

Pitfall: Glue spreads everywhere, even inside the tube.

Fix: Too much glue or the wrong glue. Medium CA works on a well drilled hole. If it's wobbly, thick CA can help fill the void. Thick CA takes longer to dry and is more likely to overflow. Epoxy can also fix a loose tube.

Glue that dries inside of the tube is hard to cleanup and risks making the inner diameter of the tube larger, and resulting in a loose fit with the matching component. The end mill can help clear the tube better than a file.

The Play-Doh hack can help, especially with epoxy. Roll out a thin layer of Play-Doh and use a cookie cutter motion to plug the tube. It's easy to pop the plugs out before using an end mill.



Pix 13

They're not mistakes, it's R&D (cont.)

Pitfall: The CA glue set before you were able to completely insert the tube.

Fix: You might be able to cut off the tube and insert the remainder into the other end, but that depends on how clean the hole. This is more likely to happen using thin CA since it sets the fastest. You can buy extra tubes most kits.

Pitfall: The blank breaks free of the brass tube and spins freely in the mandrel when turning. Or pieces of the blank come off when turning (Pix 13)

A little bit of wobble between the tube and the hole may come back to bite you. Thick CA or epoxy may help fill the void, but the stress of turning can break the bond when the glue is too little, coated unevenly or the difference in diameters is too great.

A tight bond is critical. Do sand the brass tube for a rougher surface (Pix 9) and don't rush. You might forget to roughen the surface (Pix 10) You'll probably realize that as you are inserting the brass tube. CA has limited shear strength and the force of the tool on the wood might break it loose.

It's possible to use too little glue. These are easier to sand the tube and try to glue again.

My latest setup

The other lesson learned is that the tools and equipment you buy are replaced over time because they don't work as well, or you understand the whole process better and can use different techniques.

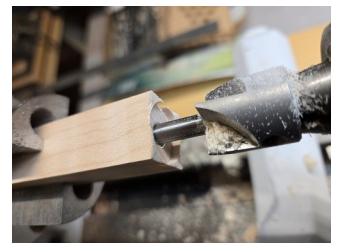
My latest kits are done with a JET 1014, a Nova chuck with pen jaws, a Jacobs chuck, a center point drill, brad point drill bit, end mill and parting tool. A bowl gouge and carbide tool for turning.

No more pen drill vise, electric drill, twist drill, drill press, disc sander or mitre saw.

- 1) The blank is mounted in the pen jaws. No need to make cross marks to find the center of the blank. Use a center point drill to make the starting hole. Mark off the brass tube length plus an 1/8 of an inch on the drill bit with masking tape. Drill with the correct diameter brad point drill.
- 2) If multiple passes are needed for the hole, stop the lathe and brush off the drill. Re-insert the drill part way, then lockdown the tailstock before turning on the lathe again. This provides an accurate entry hole.
- 3) Part off the drilled blank. Glue the brass tube in, with CA. With an end mill in the Jacobs chuck, insert the end mill in the blank, then tighten the pen jaws around the blank. This ensures accurate alignment relative to the tube rather than the sides of the blank. Use light pressure to remove excess wood down to the brass tube, flip the blank and do the other end.
- 4) The blank is ready to put on a mandrel for turning.

This procedure provides a greater amount of accuracy for drilling, milling, and cutting with CA. Gluing surfaces are more accurate too. Lining up the drill and the end mill in the blank overcomes the little bit of play that exists on a lathe.

Less is more, less moving parts means more accuracy. More accuracy means better mating parts, for gluing and for assembly. Hope these insights help you with your next project!



Cyanoacrylate (CA): A Sticky Situation



CA is short for cyanoacrylate. Researchers were trying to develop a glue for plastic gun sights for World War II.. Batch after batch was rejected, but one of the formulations stuck to everything it came onto

contact with. Years later, researchers at Eastman Kodak realized it had commercial value. Super Glue hit the market! Stories of people gluing their fingers together helped make Super Glue famous.

Moisture makes CA work. There is enough moisture in the air to make CA glue work. especially on your fingers. That is why glue in an airtight bottle stays liquified. (Don't leave CA sitting in a bottle without a cap!)

Stickfast comes in two types. One is an adhesive. Use it to glue brass tubes into wood or acrylic blanks, or waste blocks. A speedy cure time makes it a great glue for fast assemblies (compared to using epoxy). The other type is used as a finish coat for wood blanks. Pay close attention to the labels to make sure you grab the right one!

The bottles labeled "CA Thick", "CA Medium", and "CA Thin" are the adhesive. The viscosity of the glue affects how fast the glue dries. "Thin" will dry faster than "Thick". However thick also has some gap filling properties and the longer dry time is a benefit for assembly. The type of material, surface finish and assembly time will help you to choose which one to use.

When CA glue doesn't dry fast enough, the Stickfast Aerosol



Activator is an instant fix. One quick blast and the CA is set!

Bottles labeled "CA Wood Finish" (also in "Medium" and "Thin") are part of a five step finishing system that also incorporates the CA Polish. The Stickfast website (www.stickfast.com) has a video on how to use them. Wood Finish has an extended drying time which allows you to spread the finish without gluing your rag onto the pen.

Stickfast also has an "Instant CA Gel", which is thicker and even works in a vertical position. It's an alternative to epoxies



like Devcon 2 Ton or Gorilla Epoxy.

There's more than one CA glue manufacturer out there, for example GluBoost is a similar product with its own fanbase.

The Pool Cue Challenge

The Challenge: Create a pool cue roller ball pen with the Pool Cue Pen Kit

Categories: Best Wood | Best Hybrid | Best Inlay | Best Segmented
Multiple entries allowed

Celebration and showing: A pool party at the Arlington Heights Senior Center—Summer 2025

Interested? Contact Phil at editor@chicagowoodturner.com

We're looking for a dozen people who have a shared interest in shooting pool and are also turners. The reasons for doing this?

It's an easy project, for beginners and advanced turners. The AHSC has pool table next to our meeting room could host a pool party where we can present our cue sticks and talk about what went into creating them. There are lessons learned that are applicable to other turning projects. Best of all, you'll know who else in the club loves to shoot pool!

Sign up in advance so we can bulk order some pool cue kits and a bunch of bushings.

Maybe we can find a pro to teach you how to shoot better pool!



WIT

Women in Turning



Marie Anderson

WIT Happenings

January's hands on workshop at the Chicago School of Woodworking was a success with 5 women and two men turning on January 11th. We worked on a variety of projects but many of us chose to work on Wig Stands.

The best part of having a mid month turning session with these women is the joy of community! Several of these women also came to the Thursday night mentoring session on January 16th and 30th as well as the last Sunday open shop on the 26th. These are opportunities for dedicated lathe time to improve your skills and strengthen some bonds with fellow woodturners.

We encourage each other and learn from each other through shared successes and "learning opportunity moments". We spent time learning how to make proper tenons and recesses to hold the work in the chuck. The key is a 90 degree shoulder to tenon angle so the work is supported when the jaws close on the tenon (or open into a recess). Hopefully by the next CWT meeting on the 13th there will be completed wig stands ready for finishing. (Remember the next open shop is Thursday, February 6th 6-9pm. Hopefully we can finish up the turning on the first group of wig stands!)

Just as a reminder, WCWT club has challenged CWT to turn wig stands. It's a friendly challenge to see which club can turn out more wig stands by the end of March. So far, CWT has turned in 2 wig stands at the January meeting and WCWT turned in 2 wig stands at their January meeting. I am aware that there are at least 15 in progress based on what people have said to me so let's see where the count is after this month! The challenge is on! NOTE: As of 1/28 nationwide there have been 1,735 wig

stands delivered. I am hoping that we will significantly add to that number by the end of this challenge!

News from the WIT Committee: Andi is working on the winter edition of the WIT newsletter and hopes to have it completed by end of February. If you have a story or photo or tidbit that you would like to share with the greater group please send it to Andi Wolfe <andiwolfe@yahoo.com>

The WIT Committee has been hard at work putting together a virtual class to assist chapters in hosting their own EXCHANGE. This was recently announced in the most current issue of American Woodturner in the article about the 2024 WIT EXCHANGE. If anyone is interested contact Marie to get an invitation to the zoom meeting. The article includes many photos of the projects from the 2024 WIT EXCHANGE.

In other news, the next WIT Presents has been scheduled for March 2nd and will feature Rabea Gebler. All WIT Presents events are free to attend, the only requirement is to register to obtain the zoom log in for the event.

Lastly, the WIT Committee will be hosting a special interest night presentation at the 2025 AAW Symposium in St. Paul. This session is about women in turning so if you have a topic you would like to suggest, please drop me a message and I will add to the suggestions.

Marie



The CrossWITs (Marie Anderson, Mary Hansen, Leanna Pierson)

Significant Silliness, 2024, Maple burl, Osage orange, basswood, poplar, copper, glass, air-dry clay, tulle, acrylic paints, India ink, goldleaf, glitter, 18" x 9 1/2" x 9" (46cm x 24cm x 23cm)

Featured in February, 2025 American Woodturner

What's in a Name?

The 2024 Virtual WIT eXchange

WIT  EXCHANGE
VIRTUAL 2024

The word *eXchange* is the key to the magic that has brought hundreds of women together, as it emphasizes *process* over completed works.

The name, 2024 Virtual WIT (Women in Turning) eXchange, sounds like some kind of dream, maybe a comedy class, a bartering arrangement, or...? If you have been following the WIT eXchanges over the last several years, you already know

these definitions were considered when AAW's WIT committee chose the word to describe its annual collaborative event.

The women who created the plan for the first WIT eXchange imagined an event that fostered creativity, group-

filled with women openly exchanging hopes, dreams, and fears. The event is an opportunity to support each other as we learn the processes necessary to create a project based on two assigned words intended to provoke creativity.



WIT Happenings (cont.)



I am excited to announce that two of my pieces were accepted into the "Limited Palette, Unlimited Possibilities" art show at the Kavanagh Gallery at Fine Line Creative Arts Center in St. Charles. The opening reception is 6-8 pm on February 13th (so I will not make the next meeting) but the show runs through March 20th so I hope you can visit the gallery and see the show.

Marie

If you haven't submitted your work to an art show, there are a couple other opportunities for you! Go ahead - have some faith and share your work with the world (or at least a small art loving part of it).



Entries Due 2/10/25 for Does it Fit? (at the Kavanagh Gallery, St. Charles, IL)

Artists are invited to submit original artwork for the Does it Fit? exhibit at the Kavanagh Gallery of Fine Line Creative Arts Center, St. Charles, Illinois.

We are seeking 2-dimensional works that measure exactly 16" x 16", including the frame. For 3-dimensional works, each side must be as close to 16" as possible but not larger than 16", including any base or armature. We welcome all media and themes for consideration. Unleash your creativity and be part of an exciting showcase.

The Fine Line Creative Arts Center is located in the Fox River Valley, approximately one hour west of Chicago, Illinois. The show will run from March 27 – April 24, 2025, and is open to artists 18 and older who reside in the United States.



**Entries open January 1-
March 15, 2025 for
"Beginnings", 2025
AAW Member
Exhibition**

The theme for the 2025 AAW member show is "Beginnings". Each year, our goal is to host a Symposium exhibition that showcases and celebrates the full scope of excellent work being created by our members, from skillfully-crafted traditional turnings to innovative sculptures that push the boundaries.

This year's theme also reflects our Symposium host state of Minnesota, home to the headwaters of the Mississippi River. As always, artists are encouraged to interpret the theme for themselves. When you think of a beginning, what comes to mind? Do you already have a piece that reflects the theme perfectly? If it was made between March of 2023 and March of 2025 it is eligible!

See the AAW website for more information

**Entries open March 1-31, 2025 for:
"Nature's Canvas", traveling joint
exhibition**

This is a joint exhibition with SAQA (Studio Art Quilt Associates)

Please note: Pieces do not have to mimic or include wood or textiles or be nature related. Work does not have to have been created specifically for this exhibition. We are looking for work that reflects the finest in sculptural or traditional turnings.

Join us in paying homage to the age-old tradition of artistic expression through wood and fibers. From the dawn of prehistoric creativity to the present day, humans have harnessed the beauty of wood and the versatility of fibers to craft extraordinary works of art.

More information on the AAW website

Open Shop at the Chicago School of Woodworking

As part of our partnership with the Chicago School of Woodworking, no fee Open Shop Days will continue to be available to the members of the Chicago Woodturners on **the last Sunday of the month, 9:00 am to 3:00 pm**. Open Shop Days provide our members with access to all our shared equipment and tools as well as incidental (or prearranged) mentoring. Each of the Shop Days has a facilitator/mentor on site.

The Chicago Woodturners has six JET 1642s, two JET 1224 mini's and three Powermatic 3520's in a dedicated turning area at the Chicago School of Woodworking. Turning tools are available, both from the school stock and the Chicago Woodturners lending library.

Of course, all members are free to bring whatever tools and wood blanks they choose. Two slow-speed grinders, with a variety of aluminum oxide/CBN wheels and Wolverine Jigs, are available.

To avoid overcrowding, members who intend to attend should contact Andy Kuby studio@riverwoodsturner.com.



L to R: Peter Paul, Andy Kuby, Clint Stevens, Al Miotke, Steve Glass and Graham McLaughlin—volunteers who did a thorough clean-up of the shop and tuned up all ten midi and full sized lathes in during Christmas break!

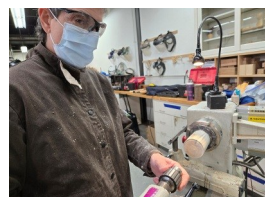
Right: Steve Glass watches as Peter Paul turns

Open Shop: Thursday, Feb 6 & 20 and Sunday, Feb 23

The Chicago Woodturners have expanded the availability of member shop time at the Chicago School of Woodworking to include **evenings on the first and third Thursday of every month, 6:00 pm to 9:00 pm**. Thursday evening shop time is \$5 per hour, to cover the school's insurance and maintenance costs. Steve Glass is the coordinator for these sessions. Please email Steve at steve_glass@comcast.net to reserve a space.



Brenda Miotke, Steve Glass and Al Miotke prepping Beads of Courage Bowl kits

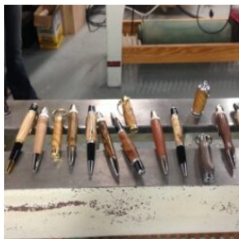


Below: Moments from Open Shop with Marie Anderson

Woodturning Classes at The Chicago School of Woodworking

Learn the fundamentals of woodturning along with several special techniques while making both spindle and cross grain projects. Instructors Clint Stevens, Andy Kuby and Al Miotke are experienced woodturners and instructors who emphasize a hassle free, safe and fun learning atmosphere in their classes.

- These carefully designed classes are perfect for inexperienced turners. You will learn about the lathe, its accessories and the tools used to shape wood. Students will be given access to all tools needed for this course and all materials will be provided.
- Students will watch demonstrations, then apply what they have learned to independent work overseen and guided by the instructors.
- These classes are provided through the Chicago School of Woodworking.
- **Go to www.chicagowoodworking.com to register**



The Chicago School of Woodworking was established in 2007 to train students in the art of furniture making. Since then, our program has expanded to include the arts of turning, scroll saw, marquetry, Chip Carving, speaker making and cabinet making.

We are committed to providing students the knowledge and skills to create functional and beautiful furniture that can be enjoyed for generations.

We have chosen machinery and tools that are safe, up-to-date, and well maintained, so students can focus on learning and enjoy the varied aspects of building a quality piece of furniture or crafting wood art.

Find out more about our offerings and class schedules on our website!

CHICAGO SCHOOL OF WOODWORKING

EDUCATING THE QUALITY MINDED HOBBYIST IN THE ART OF WOODWORKING

5680 N. Northwest Hwy, Chicago, IL 60646 | Phone: 773.275.1170
chicagowoodworking.com

Last Cut | *Phil Moy*



Credit: Chat GPT

January 29 marks the beginning of Lunar New Year. 2025 is the year of the Wood Snake. The natural elements of wood, fire, earth, metal and water are associated with the different animals. It symbolizes transformation, wisdom and renewal as well as encouraging change and growth.

I would like to see in 2025, a greater amount of interaction within the members of CWT. Activities like the Pool Cue Challenge are not as much about shooting pool, but a way to learn techniques that can be applied to other projects and to learn from one another in a less formal setting.

I would also like more input from members into this newsletter. What topics would you like, what things bring you joy or anguish?

Maybe someone would like to write about your experience with GluBoost vs Stickfast?

Don't forget to make something for your



Wood carved snake found on pinterest.com

significant other in the shop for Valentine's Day. It's a great way to justify some more time in the shop!

See you at the February meeting!

Phil

Is it bird? Is it a plane? No, it's

January AWT: Boyd Black was walking through a Cook County Forest preserve and took this picture. What do you think it is?



Keith Rose:

Hello! I was reading the January newsletter, and I recognized that burl immediately! We took photos in that forest preserve on July 31st, 2023. My best guess is that it's a Red Oak tree, as the leaves around it in my picture are pointed, but I'm not certain. I've attached the picture I took back in 2023.

Classifieds

Decluttering your Shop? Got something to sell? Looking for something?

Send an email with details and pictures and we'll post it in the Classifieds!

E-mail to: editor@chicagowoodturners.com

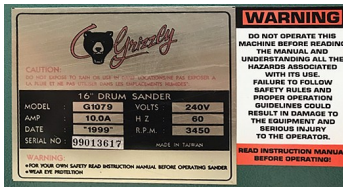


Tom Albrecht
tja490@gmail.com

Used JET JML 1015,
Lightly used, includes 4 jaw chuck, two aftermarket tool rests (3" and 8"), drive center, live center, knock out rod, wood stand.
Two lathes available, \$250.00 (each)
Pick up in Evanston

Frank Pagura
fpagura.sr@att.net

Grizzly 16" Drum Sander
Model 1079—240V
\$600 Pickup from garage door
\$300 Pickup from basement



John Dillon
630-502-8335

Powermatic Model 141 Bandsaw
MADE IN USA
1 HP - Works Good
Attached to a Rolling Base
Asking \$300 - Contact John Dillon - 630-502-8335



**Porter Cable
2HP - 6 Gallon
Air Compressor For
sale**
Like New Condition
\$75
Retail Price \$160 plus tax

STILL AVAILABLE
**18" Rikon 10-345
Bandsaw For sale**
2HP, 220V
\$1,000
\$900

18" BAND SAW
MODEL # 10-345
SERIAL # 0601600000
MOTOR 2HP, 12.5 AMPS, 220V/60HZ
BLADE LENGTH 142"
BLADE WIDTH 1/4" x 1.34"
CUTTING SPEEDS 1510/2220 FT/MIN

Contact John Dillon
630-502-8335

PRICE REDUCED

Contact
John Dillon
630-502-8335



Classifieds

Dave Pepalis

224-415-6232

Used Delta Lathe, Model 46-250

Delta Midi lathe, Model 46-250 and the bed extension. Included are two chucks and an assortment of turning tools. Everything is in nice shape, working and has no rust.

I'm looking to get \$450 for everything.



18" Delta scroll saw for sale. Also in nice shape. Asking \$50



A few more pix from Instant Gallery



SAVE THE DATE!

Turn On! Chicago 2026 Volunteers Needed!

As a member of the Chicago Woodturners you should be proud that we have a history of offering one of the best regional symposiums in the country. It's not only my opinion, we also hear that regularly from both attendees and demonstrators.

We have also been very fortunate to have had a core group of committee chairpersons who have been involved for over 10 years and were instrumental in making TOC the success it has been.

This is a rebuilding year, and we need talented and energetic members who are willing to take over many of the critical organizational roles. Detailed planning for the next symposium will remain on hold until we have a new team in place.

Contact Al Miotke at abmiotke@comcast.net or Kurt Wolff-Klammer at blhkgkurt@yahoo.com to discuss and learn more.

Thanks, Al & Kurt, TOC 2025 Co-Chairs



Segmented Woodturning Symposium
September 26-28, 2025
Crowne Plaza Hotel
Northbrook, Illinois




Demonstrators
Featured Demonstrators:
 Robin Costelle, Tom Lohman
 Malcolm Tibbetts, Curt Theobald

Additional Segmenting Talent:
 Steve Bonny, Martha Collins, Doug Drury, Reid Gilmore, Jeff Hornung, Gerald Jensen, Lloyd Johnson, Kip Lockhart, Al Miotke





Segmentedwoodturners.org



Segmenting Chicago
September 26-28, 2025

- ◆ 5 large classrooms doing 48–90 minute classes over 2.5 days.
- ◆ Tradeshow.
- ◆ Instant Gallery.
- ◆ Hotel attached to the conference center.
- ◆ Raffle full of vendor provided Products.
- ◆ People's Choice award.
- ◆ Lifetime Achievement award.
- ◆ Saturday banquet with entertainment by the Johnson Brothers.
- ◆ Discounted symposium room rate.
- ◆ Spouse/companion activity.
- ◆ Pleasant suburban location close to the interstate highway.

The Segmented Woodturners are a 501 (c)(3) Organization and a chapter of:



AAW AMERICAN ASSOCIATION OF WOODTURNERS
 WE ARE TEACHING THE WORLD TO TURN.

March CWT meeting & Hands On Workshop with Matt Monaco

March 13

At AHSC

&

**March 14-16,
2025**

At CSW



Matt will cover bowl turning basics, natural edge end grain vessels, lidded boxes, and classical wooden pottery vessels

Contact Rich Nye or
Brenda Miotke to sign up
for the workshop!

Cost for the classes are
\$400 for all three days or
\$150 a day.

At center of Matt's work is his understanding & mastery of tool control, sharpening and cutting execution as an expression of traditionally crafted design as fine art -- in producing forms & items that are made to be as tactile as they are sublime, and created with intent & purpose.

Matt is also a Fine Woodworking Contributor & Ambassador who values both the integrity of traditional woodturning and mastery of the craft as an art, as well as diversity and mutual equity within the handmade craft and woodworking idiom.

Visit Matt at monacobowls.com

2025 Hands-On Classes At CSW

Matt Monaco

Mar 14-16

Pat Carroll

May 8-11

Donna Zils Banfield

Sept 11-14



2025 PenMakers International Chicagoland MPG

April 11 and 12, 2025

Chicago Marriott Northwest, Hoffman Estates, IL

Register Early For Better Odds To Winning

If you came to an event in the past, you know that we give away a lathe and many more big and small prizes. Tickets for the big prizes are based on how early you sign up. For every month in advance, you'll get an extra ticket. You know you are coming, sign up NOW and get extra tickets!

midwestpenturnersgathering.com



VALENTINES DAY SALE - 14% off!

Looking for that something special for your sweetie for Valentine’s Day this year? Stop by Batavia Hardwoods to check out some wonderful hand-made wood products created by local wood artisans. Plus, we’re having a sale!

Gift items include functional wood products like bowls, charcuterie and cutting boards, spatulas and spoons, dough-bowls, candlesticks, pens, rolling pins, jewelry boxes and more!!

This year Batavia Hardwoods will be celebrating with **14% discounts throughout our inventory of hardwood, turning stock and finished products!**

Since our normal business day is Saturday, we’re holding our 14% off sale, not on February 14th, but moving it up to **FEBRUARY 8, 2025**. Plenty of time to buy that special gift (or a gift card) for your sweetie. Or, load up on some lumber or turning stock for your next project.

Hope to see you soon!



Happy Valentines Day!

Chicago Firewood

If you are a frequent visitor to the Chicago School of Woodworking, you’ve probably noticed the stacks of firewood along a fence as you drive south of CSW along Northwest Highway. It raises questions and thoughts:

- Do they have anything that is good for turning?
- What kind of wood do they have?
- It must be kiln dried to be firewood. Any green logs?
- Can I pick up something to turn at CSW during Open Shop?

Inquiring minds dropped in to see what they have. General manager Jim Hanlon was enthusiastic about what they could for a woodturner,

His wood comes from a variety of sources, from tree trimmers to tree growers. They supply firewood to businesses with pizza ovens and also to homeowners with fireplaces. They get 16” logs that have been kiln dried. They split the logs in the shop, creating mountains of hickory, oak, birch and many others (what) stacked in a cavernous building.

In the far corner, there is also a stack of logs!

Jim will be dropping in on CSW to see what things we do. He’s open to requests for burls and crotches, depending of what his suppliers may have on hand. We can plan a field trip right before open shop days to check out the potential. Sometimes a log just speaks out to you!

Prices vary, calculated on the volume of the piece.

P.S. If you need any firewood for this cold winter, they have lots of it!



If you don’t keep a chainsaw in the back of your car



Chicago Firewood
 5600 S. Northwest Highway
 Chicago, IL 60646
 Phone: 312-907-4265
 Open Mon-Friday 9 to 6pm, Sat and Sunday 9 to 5pm



AAW is a nonprofit organization dedicated to advancing the art and craft of woodturning worldwide through education.

With more than 16,000 members and over 365 local chapters globally, AAW members include amateurs, hobbyists, professionals, gallery owners, collectors, tool and equipment suppliers, and others.

Join the AAW and have access to the largest portfolio of woodturning-related material in the world!

Hone your knowledge and skills using AAW's online learning portals, exclusive print and digital publications, curated educational videos, high-quality safety resources, and more.

A Search for a New Executive Director for AAW

Marie Anderson is on the search committee for a new Executive Director for AAW

The Executive Director search is officially launched and live on Ballinger | Leafblad's website: <https://www.ballingerleafblad.com/current-searches>. The direct link to the position profile can also be accessed by using this link: bit.ly/AAW_ED

Please share with any networks or potential applicants to help accelerate networking serendipity.

If any applicants reach out asking you questions about the process or show interest in applying, please send everyone directly to Jamie Millard, jamie@ballingerleafblad.com.



To: Rich Hall-Reppen

Thank you for requesting a **Chapter group discount** for the AAW International Woodturning Symposium. We are excited for you and your fellow chapter members to join us at the biggest woodturning event of the year!

To qualify to use this group discount, at least five people from your chapter must register for the symposium. You do not have to register together and you can register individually. **The discount code can only be used on a Member Registration or Non-Member Registration. It does not apply to any other registration option and cannot be combined with any other discount promotions.**

Please share this discount code with the other members of your chapter who will be attending the symposium.

Use this code at check-out to get \$40 off your registration:

AAW25GROUP



February, 2025

The *American Woodturner* journal is the premier source of woodturning inspiration and instruction since 1986. AAW members have free access to the entire archive of journals when they sign in. Individual issues may be purchased in our online store.

Looking for a special article? Specific topic?

Go to www.woodturner.org Click tabs Resources, Publications, American Woodturner, Index to view or download the Index

An index entry such as this: "New lathes at AAW Trade Show, 34.3:61" means the information would be found in volume 34, issue 3, page 61.

Volume to Years

- 35:1 to Present > 2020 to Present
- 25:1 to 34:6 > 2010 to 2019
- 15:1 to 24:4 > 2000 to 2009
- 4:3 to 14:4 > 1990 to 1999
- 1:1 to 4:42 > 1986 to 1989



Register by April 11 to get the best price!

aawsymposium.org



Visit the American Association of Woodturners at woodturner.org

It's even more fun when you bring a friend!

Reasons to join Chicago Woodturners

- Monthly meetings & newsletter
- Access to club member expertise and mentors
- Classes and hands-on sessions with named turners
- In-person demonstrations, product discounts, raffles
- and generally a good bunch of people to hang out with!

Membership Fees

- \$30 Individual membership
- \$40 Family membership.
- \$10 Under age of 25

Yearly membership fees for Chicago Woodturners are due at the beginning of the year. You can join at any time of the year!

Pay with cash or a check at the monthly meeting. (Make checks payable to 'Chicago Woodturners')

Application forms are found online! Contact Brenda Miotke for more information. By email: bkmiotke@comcast.net

Or by snail mail

Chicago Woodturners
c/o Brenda Miotke
920 North Sumac Lane
Mount Prospect, IL 60056



Join the Movers and Shakers of Woodturning in Chicago!



Est. 1988

37 years of craft, art, technology and tradition

**Join us for our monthly meetings,
everyone is welcome!**

Arlington Heights Senior Center
1801 W. Central Road,
Arlington Heights, IL 60005

6:00 pm Come early to get your raffle tickets,
check out the silent auction and to network!

7:00 pm to 10:00 Meeting

Can't come in person? Zoom!

www.zoom.com
Meeting ID: 915 7899 5899
Passcode: 003359



2025 CWT Meeting Calendar*

Jan 9	May 8	Sept 11
Feb 13	Jun 12	Oct 9
Mar 13	July 10	Nov 13
Apr 10	Aug 14	Dec 18*

*CWT meetings are generally scheduled for the second Thursday of the month. We'll post any changes online, in the newsletter and by e-mail!



Calendar of Events

Feb 6, 20	CWT Open Shop Thursdays	Chicago School of Woodworking	Chicago, IL
Feb 13	CWT Monthly Meeting	Arlington Heights Senior Center	Arlington Heights, IL
Feb 23	Open Shop Sunday	Chicago School of Woodworking	Chicago, IL
Mar 6, 20	CWT Open Shop Thursdays	Chicago School of Woodworking	Chicago, IL
Mar 13	CWT Monthly Meeting	Arlington Heights Senior Center	Arlington Heights, IL
Mar 14-16	Hands On Workshop—Mark Monaco	Chicago School of Woodworking	Chicago, IL
Mar 30	Open Shop Sunday	Chicago School of Woodworking	Chicago, IL
April 2-3	Focus on the Arts	Highland Park High School	Highland Park, IL

Visit the Chicago Woodturners at
chicagowoodturners.com

